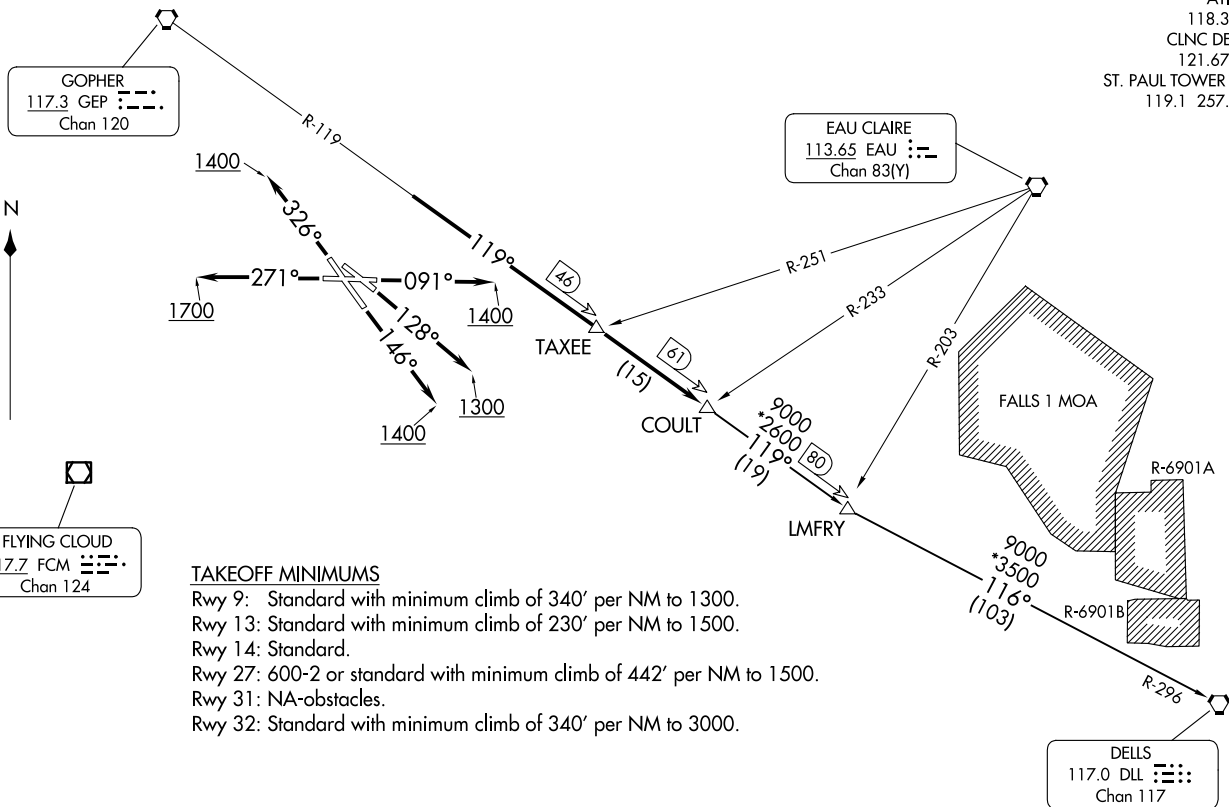


(COULT7, COULT) 23334
COULT SEVEN DEPARTURE

ST PAUL DOWNTOWN HOLMAN FLD (STP)
AL-263 (FAA)
ST PAUL, MINNESOTA

MINNEAPOLIS DEP CON
121.2 335.65
ATIS
118.35
CLNC DEL
121.675
ST. PAUL TOWER ★
119.1 257.8



TAKEOFF MINIMUMS

- Rwy 9: Standard with minimum climb of 340' per NM to 1300.
- Rwy 13: Standard with minimum climb of 230' per NM to 1500.
- Rwy 14: Standard.
- Rwy 27: 600-2 or standard with minimum climb of 442' per NM to 1500.
- Rwy 31: NA-obstacles.
- Rwy 32: Standard with minimum climb of 340' per NM to 3000.

FLYING CLOUD
117.7 FCM
Chan 124



GOPHER
117.3 GEP
Chan 120

EAU CLAIRE
113.65 EAU
Chan 83(Y)

DELLS
117.0 DLL
Chan 117

(CONTINUED ON FOLLOWING PAGE)

NOTE: RADAR required.
NOTE: Chart not to scale.

COULT SEVEN DEPARTURE
(COULT7, COULT) 29MAR18

ST PAUL, MINNESOTA
ST PAUL DOWNTOWN HOLMAN FLD (STP)



DEPARTURE ROUTE DESCRIPTION

TAKEOFF RUNWAY 9: Climb heading 091° to 1400 for RADAR vectors to intercept GEP R-119 to COULT INT/GEP 61 DME, thence

TAKEOFF RUNWAY 13: Climb heading 128° to 1300 for RADAR vectors to intercept GEP R-119 to COULT INT/GEP 61 DME, thence

TAKEOFF RUNWAY 14: Climb heading 146° to 1400 for RADAR vectors to intercept GEP R-119 to COULT INT/GEP 61 DME, thence

TAKEOFF RUNWAY 27: Climb heading 271° to 1700 for RADAR vectors to intercept GEP R-119 to COULT INT/GEP 61 DME, thence

TAKEOFF RUNWAY 32: Climb heading 326° to 1400 for RADAR vectors to intercept GEP R-119 to COULT INT/GEP 61 DME, thence

. . . . on transition or assigned route. Expect clearance to filed altitude/flight level 10 (ten) minutes after departure.

DELLS TRANSITION (COULT7.DLL): From over COULT INT on GEP R-119 to LMFY INT then on DLL R-296 to DLL VORTAC.

NC-1, 20 FEB 2025 to 20 MAR 2025

NC-1, 20 FEB 2025 to 20 MAR 2025