

LOC/DME I-VKG 111.5 Chan 52	APP CRS 146°	Rwy Idg TDZE Apt Elev 6148 705 705
--	------------------------	--

ILS or LOC RWY 14

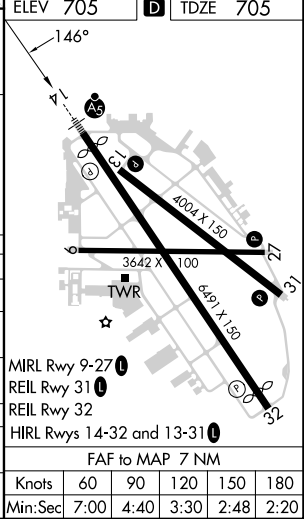
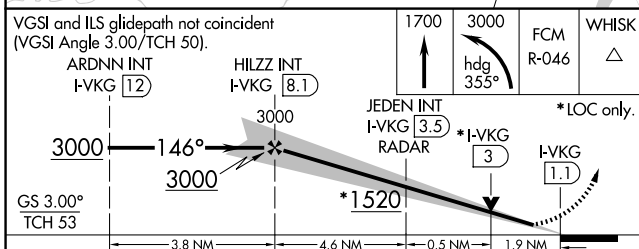
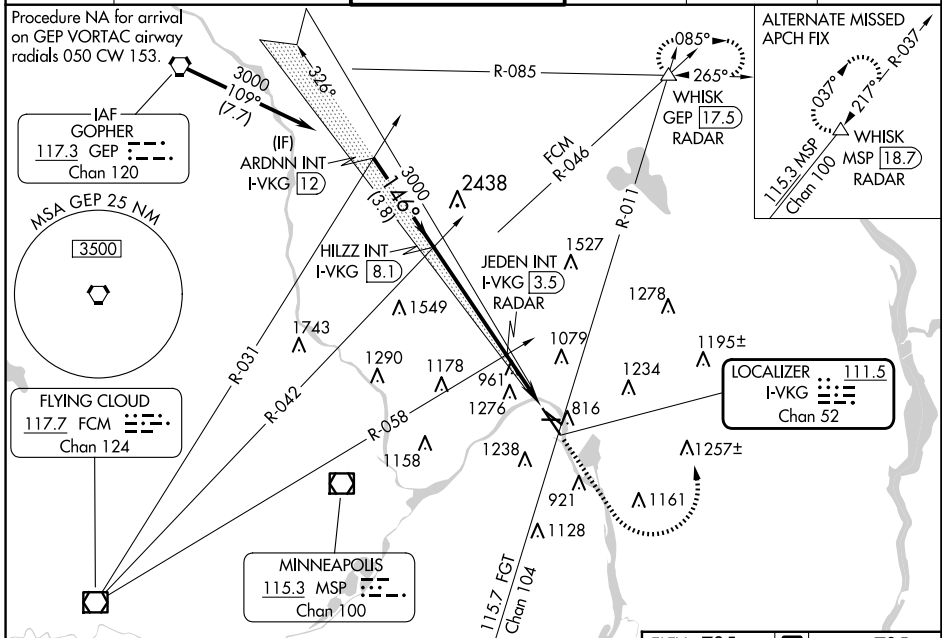
ST PAUL DOWNTOWN HOLMAN FLD (STP)

⚠ Inop table does not apply to S-ILS 14. Rwy 14 helicopter visibility reduction below RVR 4000 NA. For inop ALS, increase S-LOC 14 Cat A visibility to RVR 5500, Cat B visibility to RVR 6000, and Cat C/D visibility to 2½ SM.

MALS R
AS

MISSED APPROACH: Climb to 1700 then climbing left turn to 3000 on heading 355° and on FCM VOR/DME R-046 to WHISK INT/GEOP 17.5 DME/RADAR and hold.

ATIS 118.35	MINNEAPOLIS APP CON 121.2 335.65	ST. PAUL TOWER ★ 119.1 (CTAF) 257.8	GND CON 121.675	CLNC DEL 121.675	UNICOM 122.95
-----------------------	--	---	---------------------------	----------------------------	-------------------------



CATEGORY	A	B	C	D
S-ILS 14	955/40 250 (300-¾)			
S-LOC 14	1520/40	815 (900-¾)	1520-1⅞	815 (900-1⅞)
C CIRCLING	1580-1¼	875 (900-1¼)	1580-2½	875 (900-2½)
JEDEN FIX MINIMUMS				
S-LOC 14	1360/40	655 (700-¾)	1360-1⅓	655 (700-1⅓)
C CIRCLING	1580-1¼	875 (900-1¼)	1580-2½	875 (900-2½)

NC-1, 20 FEB 2025 to 20 MAR 2025

NC-1, 20 FEB 2025 to 20 MAR 2025