

LOC/DME I-BAO 111.5 Chan 52	APP CRS 326°	Rwy Idg TDZE Apt Elev	6109 704 705
--	------------------------	-----------------------------	---

ILS or LOC RWY 32

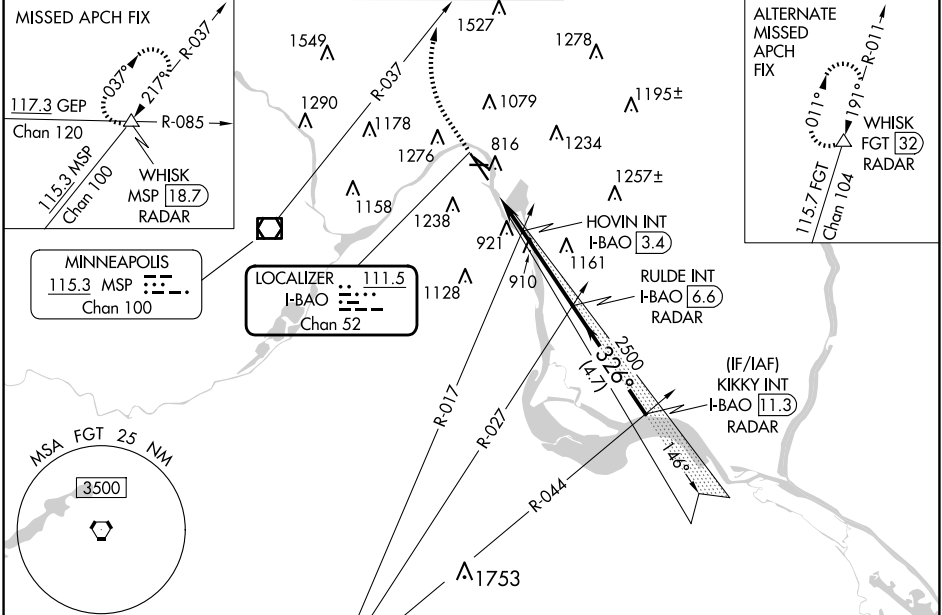
ST PAUL DOWNTOWN HOLMAN FLD (STP)

DME or RADAR required. RADAR required for procedure entry.

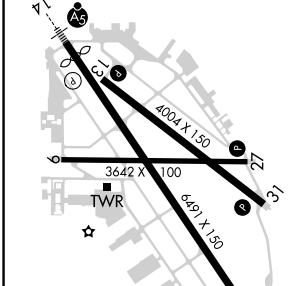
MISSED APPROACH: Climb to 1300 then climbing right turn to 4000 on heading 010° and MSP R-037 to WHISK INT/MSP 18.7 DME/RADAR and hold.

⚠ Rwy 32 helicopter visibility reduction below RVR 4000 NA. Inop table does not apply to S-ILS 32 all Cats and S-LOC all Cats. HOVIN fix minimums: Inop table does not apply to Cats A/B. For inop ALS, increase Cats C/D visibility to 1 3/8 SM.
⊖ -30°C

ATIS 118.35	MINNEAPOLIS APP CON 121.2 335.65	ST. PAUL TOWER * 119.1 (CTAF) 0 257.8	GND CON 121.675	CLNC DEL 121.675	UNICOM 122.95
-----------------------	--	---	---------------------------	----------------------------	-------------------------



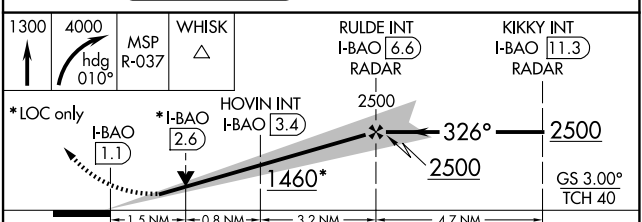
ELEV 705	D	TDZE 704
----------	----------	----------



MIRL Rwy 9-27 **Ⓛ**
REIL Rwy 31 **Ⓛ**
REIL Rwy 32
HIRL Rwys 14-32 and 13-31 **Ⓛ**

FAF to MAP 5.5 NM

Knots	60	90	120	150	180
Min:Sec	5:30	3:40	2:45	2:12	1:50



CATEGORY	A	B	C	D
S-ILS 32	1011/50 307 (400-1)			
S-LOC 32	1460/55 756 (800-1)	1460/60 756 (800-1¼)	1460-2	756 (800-2)
C CIRCLING	1580-1¼	875 (900-1¼)	1580-2½ 875 (900-2½)	1580-2¾ 875 (900-2¾)
HOVIN FIX MINIMUMS				
S-LOC 32	1220/55	516 (600-1)	1220-1¼	516 (600-1¼)
C CIRCLING	1580-1¼	875 (900-1¼)	1580-2½ 875 (900-2½)	1580-2¾ 875 (900-2¾)

NC-1, 20 FEB 2025 to 20 MAR 2025

NC-1, 20 FEB 2025 to 20 MAR 2025