

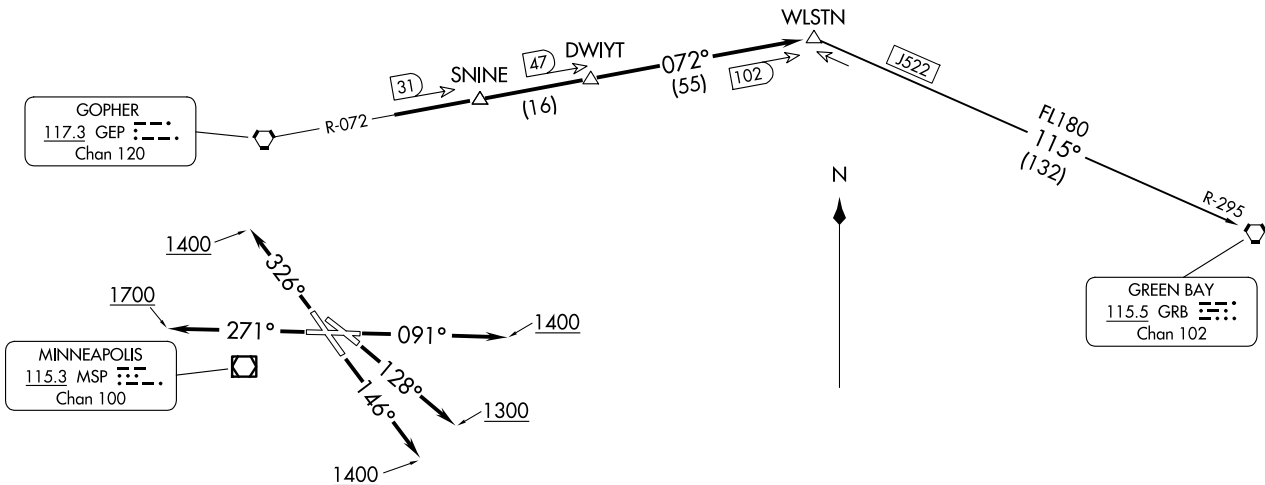
**TOP ALTITUDE:
(JETS) 7000/
(PROPS) 5000**

MINNEAPOLIS DEP CON
121.2 335.65
ATIS
118.35
CLNC DEL
121.675
ST. PAUL TOWER★
119.1 257.8

GOPHER
117.3 GEP
Chan 120

MINNEAPOLIS
115.3 MSP
Chan 100

GREEN BAY
115.5 GRB
Chan 102



TAKEOFF MINIMUMS

- Rwy 9: Standard with minimum climb of 340' per NM to 1300.
- Rwy 13: Standard with minimum climb of 235' per NM to 1500.
- Rwy 14: Standard.
- Rwy 27: 600-2 or standard with minimum climb of 442' per NM to 1500.
- Rwy 31: NA-Obstacles.
- Rwy 32: Standard with minimum climb of 340' per NM to 3000.

(CONTINUED ON FOLLOWING PAGE)

NOTE: RADAR required.

NOTE: Chart not to scale.

WLSTN SEVEN DEPARTURE
(WLSTN7.WLSTN) 17AUG17

ST. PAUL, MINNESOTA
ST. PAUL DOWNTOWN HOLMAN FLD (STP)

(WLSTN7.WLSTN) 23334
WLSTN SEVEN DEPARTURE

ST. PAUL DOWNTOWN HOLMAN FLD (STP)
ST. PAUL, MINNESOTA
AL-263 (FAA)



DEPARTURE ROUTE DESCRIPTION

TAKEOFF RUNWAY 9: Climb heading 091° to 1400 for RADAR vectors to GEP R-072 to WLSTN/GEP 102 DME, thence

TAKEOFF RUNWAY 13: Climb heading 128° to 1300 for RADAR vectors to GEP R-072 to WLSTN/GEP 102 DME, thence

TAKEOFF RUNWAY 14: Climb heading 146° to 1400 for RADAR vectors to GEP R-072 to WLSTN/GEP 102 DME, thence

TAKEOFF RUNWAY 27: Climb heading 271° to 1700 for RADAR vectors to GEP R-072 to WLSTN/GEP 102 DME, thence

TAKEOFF RUNWAY 32: Climb heading 326° to 1400 for RADAR vectors to GEP R-072 to WLSTN/GEP 102 DME, thence

. . . .on assigned transition or assigned route. Expect clearance to filed altitude/flight level 10 (ten) minutes after departure.

GREEN BAY TRANSITION (WLSTN7.GRB): From over WLSTN on GRB R-295 to GRB VORTAC.

NC-1, 20 FEB 2025 to 20 MAR 2025

NC-1, 20 FEB 2025 to 20 MAR 2025