

ZMBRO SEVEN DEPARTURE
(ZMBRO7.ZMBRO) 17AUG17

ST. PAUL, MINNESOTA
ST PAUL DOWNTOWN HOLMAN FLD (STP)

**TOP ALTITUDE:
(JETS) 7000/
(PROPS) 5000**

MINNEAPOLIS
115.3 MSP
Chan 100

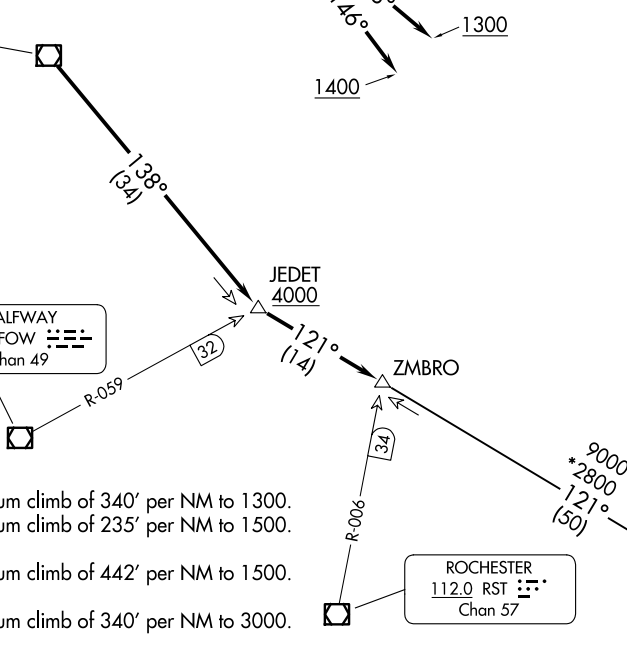
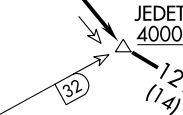
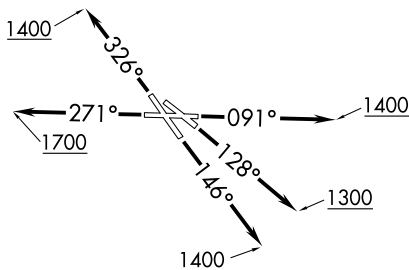
HALFWAY
111.2 FOW
Chan 49

ROCHESTER
112.0 RST
Chan 57

NODINE
117.9 ODI
Chan 126

TAKEOFF MINIMUMS

- Rwy 9: Standard with minimum climb of 340' per NM to 1300.
- Rwy 13: Standard with minimum climb of 235' per NM to 1500.
- Rwy 14: Standard.
- Rwy 27: Standard with minimum climb of 442' per NM to 1500.
- Rwy 31: NA - Obstacles.
- Rwy 32: Standard with minimum climb of 340' per NM to 3000.



MINNEAPOLIS DEP CON
121.2 284.7
ATIS
118.35
CLNC DEL
121.675
ST. PAUL TOWER ★
119.1 257.8

(ZMBRO7.ZMBRO) 23334
ZMBRO SEVEN DEPARTURE

AL-263 (FAA)

ST PAUL DOWNTOWN HOLMAN FLD (STP)
ST. PAUL, MINNESOTA

(CONTINUED ON FOLLOWING PAGE)

NOTE: RADAR required.

NOTE: Chart not to scale.



DEPARTURE ROUTE DESCRIPTION

TAKEOFF RUNWAY 9: Climb heading 091° to 1400 for RADAR vectors to MSP VOR/DME then on MSP R-138 to cross JEDET INT/MSP 34 DME, at or above 4000; then on ODI R-301 to ZMBRO INT/ODI 50 DME, thence

TAKEOFF RUNWAY 13: Climb heading 128° to 1300 for RADAR vectors to MSP VOR/DME then on MSP R-138 to cross JEDET INT/MSP 34 DME, at or above 4000; then on ODI R-301 to ZMBRO INT/ODI 50 DME, thence

TAKEOFF RUNWAY 14: Climb heading 146° to 1400 for RADAR vectors to MSP VOR/DME then on MSP R-138 to cross JEDET INT/MSP 34 DME, at or above 4000; then on ODI R-301 to ZMBRO INT/ODI 50 DME, thence

TAKEOFF RUNWAY 27: Climb heading 271° to 1700 for RADAR vectors to MSP VOR/DME then on MSP R-138 to cross JEDET INT/MSP 34 DME, at or above 4000; then on ODI R-301 to ZMBRO INT/ODI 50 DME, thence

TAKEOFF RUNWAY 32: Climb heading 326° to 1400 for RADAR vectors to MSP VOR/DME then on MSP R-138 to cross JEDET INT/MSP 34 DME, at or above 4000; then on ODI R-301 to ZMBRO INT/ODI 50 DME, thence

. . . .on assigned transition or route. Expect clearance to filed altitude/flight level 10 (ten) minutes after departure.

NODINE TRANSITION (ZMBRO7.ODI): From over ZMBRO on ODI R-301 to ODI VORTAC.

NC-1, 20 FEB 2025 to 20 MAR 2025

NC-1, 20 FEB 2025 to 20 MAR 2025