

LOC/DME I-PJL <b>110.7</b> Chan <b>44</b>	APP CRS <b>121°</b>	Rwy Idg TDZE Apt Elev	<b>7620</b> <b>841</b> <b>842</b>
---	------------------------	-----------------------------	---

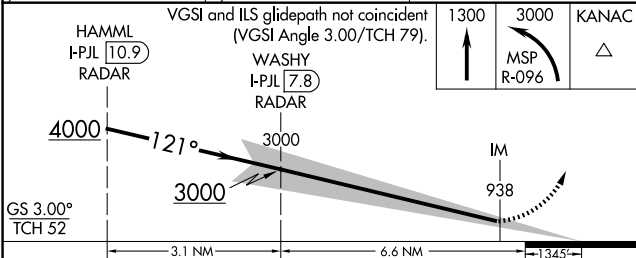
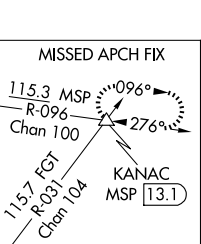
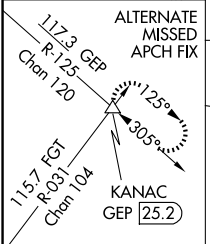
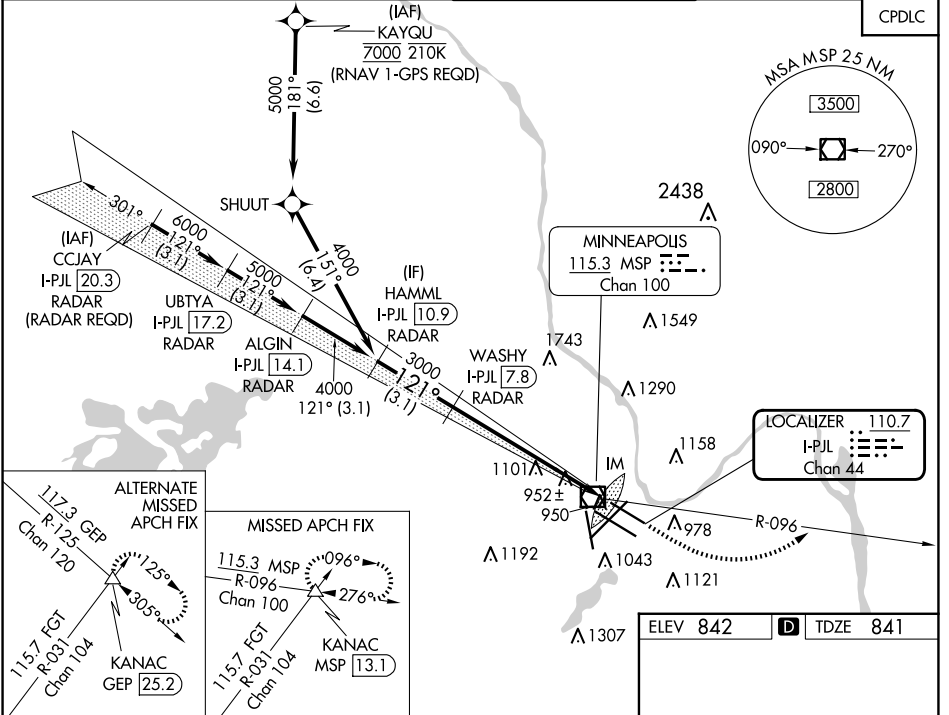
# ILS RWY 12L (CAT II & III)

## MINNEAPOLIS-ST PAUL INTL/WOLD-CHAMBERLAIN (MSP)

**⚠** Simultaneous approach authorized with Rwy 12R.  
**⚠** CAT II: RVR 1000 authorized with specific OPSPEC, MSPEC, or LOA approval and use of autoland or HUD to touchdown. DME or RADAR required.

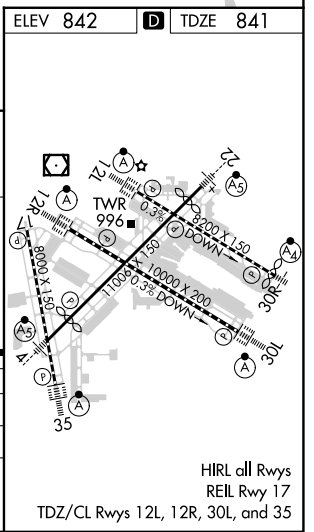
**ALSIF-2**  
**Ⓜ** MISSED APPROACH: Climb to 1300, then climbing left turn to 3000 on MSP VOR/DME R-096 to KANAC INT/MSP 13.1 DME and hold.

D-ATIS ARR <b>135.35</b> <b>239.275</b> DEP <b>120.8</b>	MINNEAPOLIS APP CON <b>118.725</b> <b>335.65</b> (Rwy 35) <b>119.3</b> <b>335.65</b> (12L-30R, 4-22, 17) <b>126.95</b> <b>335.65</b> (12R-30L)	MINNEAPOLIS TOWER <b>123.675</b> <b>273.55</b> (17-35) <b>123.95</b> <b>273.55</b> (12L-30R) <b>126.7</b> <b>273.55</b> (12R-30L, 4-22)	GND CON <b>N 121.8</b> <b>348.6</b> <b>S 121.9</b> <b>348.6</b> <b>W 127.925</b> <b>348.6</b>	CLNC DEL <b>133.2</b>
--	---	--	--	--------------------------



CATEGORY	A	B	C	D
S-ILS 12L	CAT II RA 91/12 100 DA 941			
S-ILS 12L	CAT III RVR 07			

**CATEGORY II & III ILS - SPECIAL AIRCREW & AIRCRAFT CERTIFICATION REQUIRED**



HIRL all Rwys  
 REIL Rwy 17  
 TDZ/CL Rwys 12L, 12R, 30L, and 35

NC-1, 20 FEB 2025 to 20 MAR 2025

NC-1, 20 FEB 2025 to 20 MAR 2025