

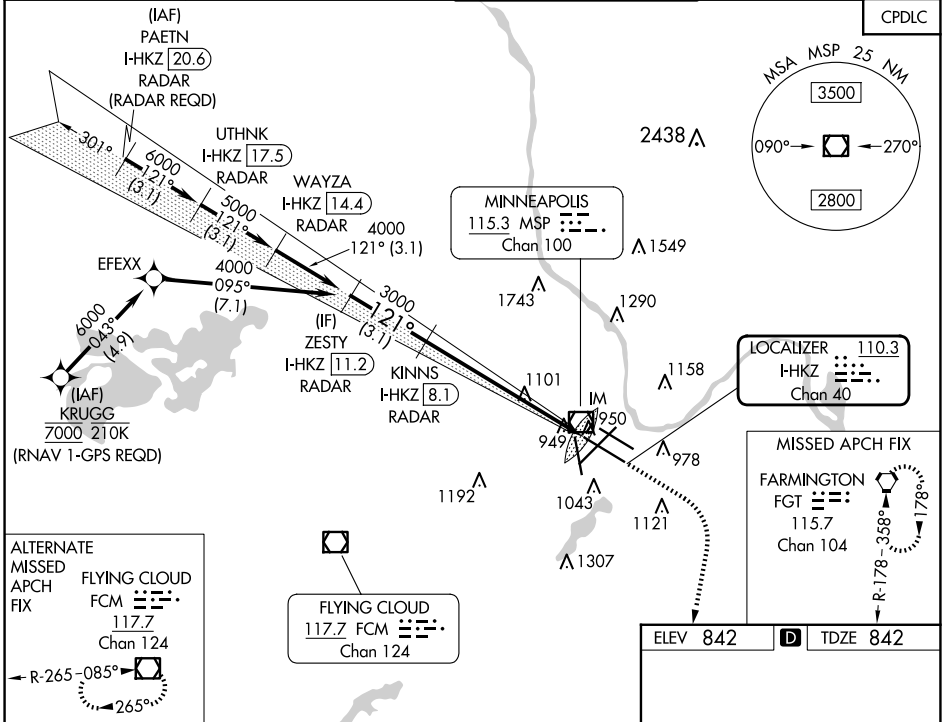
LOC/DME I-HKZ 110.3 Chan 40	APP CRS 121°	Rwy ldg 10000 TDZE 842 Apt Elev 842
---	------------------------	--

ILS RWY 12R (SA CAT I)

MINNEAPOLIS-ST PAUL INTL/WOLD-CHAMBERLAIN (MSP)

▼ DME or RADAR required. Simultaneous approach authorized with Rwy 12L. Requires specific OPSPEC, MSPEC, or LOA approval and use of HUD to DH.	ALS-F-2 	MISSED APPROACH: Climb to 1300 then climbing right turn to 3000 direct FGT VORTAC and hold.
---	--------------------	--

D-ATIS ARR 135.35 239.275 DEP 120.8	MINNEAPOLIS APP CON 118.725 335.65 (Rwy 35) 119.3 335.65 (12L-30R, 4-22, 17) 126.95 335.65 (12R-30L)	MINNEAPOLIS TOWER 123.675 273.55 (17-35) 123.95 273.55 (12L-30R) 126.7 273.55 (12R-30L, 4-22)	GND CON N 121.8 348.6 S 121.9 348.6 W 127.925 348.6	CLNC DEL 133.2
---	--	---	---	--------------------------



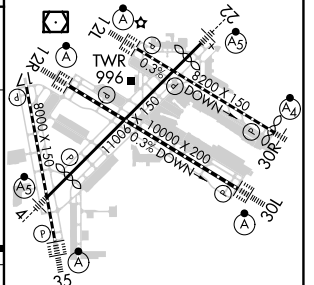
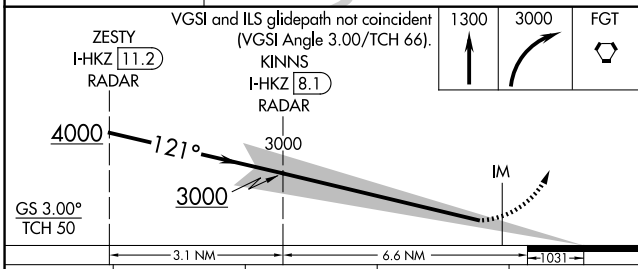
ALTERNATE MISSED APCH FIX

FLYING CLOUD FCM
117.7
Chan 124

FLYING CLOUD
117.7 FCM
Chan 124

R-265-085°

ELEV 842	D	TDZE 842
----------	----------	----------



CATEGORY	A	B	C	D
S-ILS 12R	RA 168/14 150 DA 992			

SA CATEGORY I ILS - SPECIAL AIRCREW & AIRCRAFT CERTIFICATION REQUIRED

HIRL all Rwws
REIL Rwy 17
TDZ/CL Rwws 12L, 12R, 30L, and 35

NC-1, 20 FEB 2025 to 20 MAR 2025

NC-1, 20 FEB 2025 to 20 MAR 2025