

| | | |
|---|------------------------|--|
| LOC/DME I-MSP 110.3 Chan 40 | APP CRS 301° | Rwy Idg 10000 TDZE 823 Apt Elev 842 |
|---|------------------------|--|

MINNEAPOLIS-ST PAUL INTL/WOLD-CHAMBERLAIN (MSP)

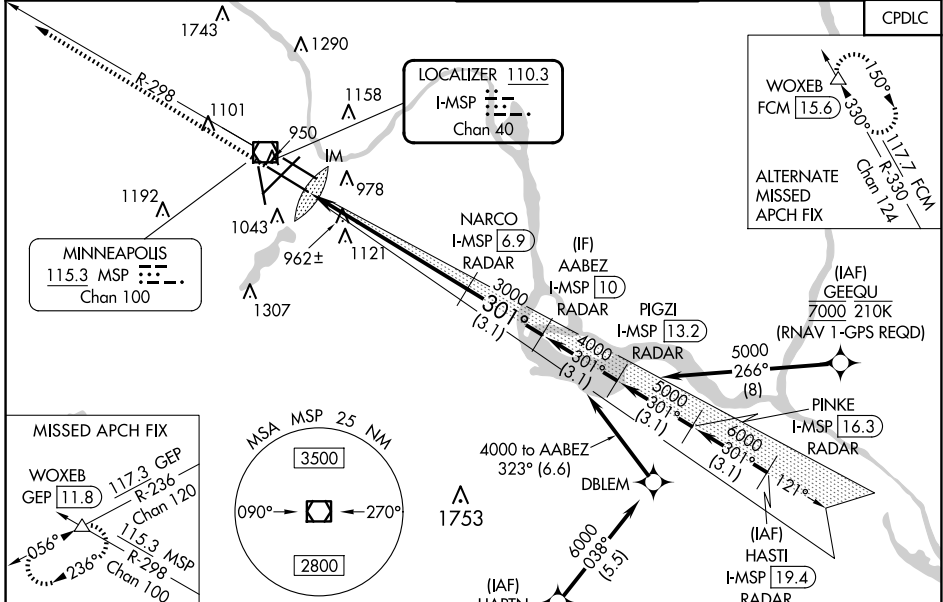
ILS RWY 30L (CAT II)

▼ DME or RADAR required. Simultaneous approaches authorized with Rwy 30R and ILS V RWY 35 (CONVERGING). RVR 1000 authorized with specific OPSPEC, MSPFC, or LOA approval and use of autoland or HUD to touchdown.

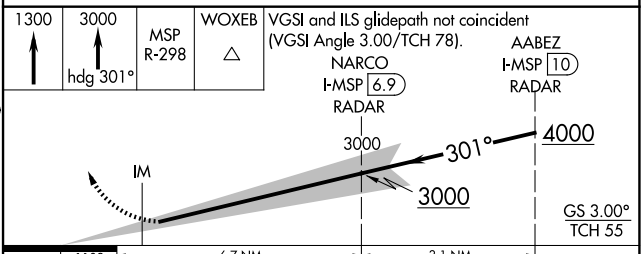
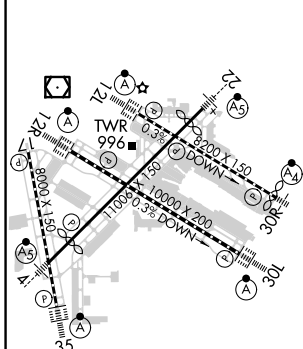
ALS-F-2
(A)

MISSED APPROACH: Climb to 1300 then climb to 3000 on heading 301° and MSP VOR/DME R-298 to WOXEB INT/ GEP WORTAC 11.8 DME and hold.

| | | | | |
|---|--|---|---|--------------------------|
| D-ATIS ARR 135.35 239.275 DEP 120.8 | MINNEAPOLIS APP CON 118.725 335.65 (Rwy 35) 119.3 335.65 (12L-30R, 4-22, 17) 126.95 335.65 (12R-30L) | MINNEAPOLIS TOWER 123.675 273.55 (17-35) 123.95 273.55 (12L-30R) 126.7 273.55 (12R-30L, 4-22) | GND CON N 121.8 348.6 S 121.9 348.6 W 127.925 348.6 | CLNC DEL 133.2 |
|---|--|---|---|--------------------------|



| | | |
|-----------------|----------|-----------------|
| ELEV 842 | D | TDZE 823 |
|-----------------|----------|-----------------|



| | | | | |
|-----------|---------------------|---|---|---|
| CATEGORY | A | B | C | D |
| S-ILS 30L | RA NA/12 100 DA 923 | | | |

CATEGORY II ILS - SPECIAL AIRCREW & AIRCRAFT CERTIFICATION REQUIRED

HIRL all Rwys
REIL Rwy 17
TDZ/CL Rwys 12L, 12R, 30L, and 35

ILS RWY 30L (CAT II)

NC-1, 20 FEB 2025 to 20 MAR 2025

NC-1, 20 FEB 2025 to 20 MAR 2025