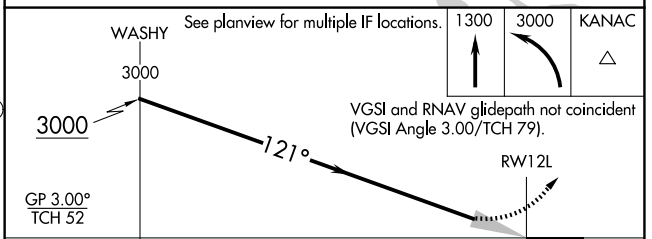
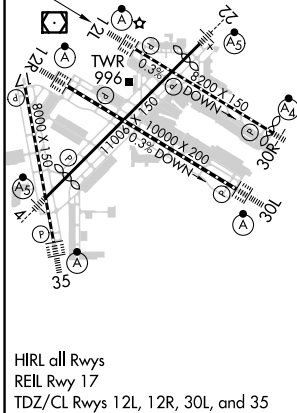
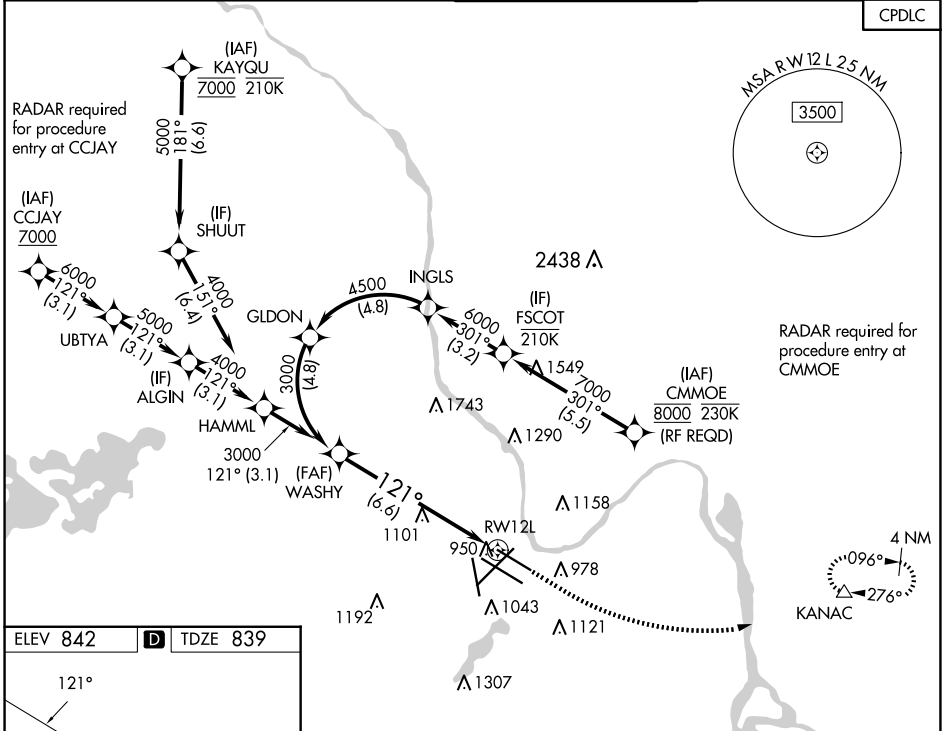


APP CRS	Rwy Idg	<b>7620</b>
<b>121°</b>	TDZE	<b>839</b>
	Apt Elev	<b>842</b>

# RNAV (RNP) Y RWY 12L

MINNEAPOLIS-ST PAUL INTL/WOLD-CHAMBERLAIN (MSP)

<p><b>▼</b> For uncompensated Baro-VNAV systems, procedure NA below -20°C (-4°F) or above 54°C (130°F). GPS required.</p>	<p>MINNEAPOLIS APP CON</p>		<p>MINNEAPOLIS TOWER</p>		<p>GND CON</p>		<p>CLNC DEL <b>133.2</b></p>	
	<p>D-ATIS ARR <b>135.35 239.275</b> DEP <b>120.8</b></p>	<p><b>118.725 335.65</b> (Rwy 35) <b>119.3 335.65</b> (12L-30R, 4-22, 17) <b>126.95 335.65</b> (12R-30L)</p>		<p><b>123.675 273.55</b> (17-35) <b>123.95 273.55</b> (12L-30R) <b>126.7 273.55</b> (12R-30L, 4-22)</p>		<p><b>N 121.8 348.6</b> <b>S 121.9 348.6</b> <b>W 127.925 348.6</b></p>		
	<p>ALSIF-2 MISSED APPROACH: Climb to 1300 then climbing left turn to 3000 direct KANAC and hold.</p>							



GP 3.00° TCH 52	6.6 NM			
CATEGORY	A	B	C	D
RNP 0.15 DA	1150/24 311 (400-½)			
RNP 0.30 DA	1241/45 402 (400-⅔)			

**AUTHORIZATION REQUIRED**

MINNEAPOLIS, MINNESOTA  
Orig 30APR15

MINNEAPOLIS-ST PAUL INTL/WOLD-CHAMBERLAIN (MSP)  
44°53'N-93°13'W  
**RNAV (RNP) Y RWY 12L**

NC-1, 20 FEB 2025 to 20 MAR 2025

NC-1, 20 FEB 2025 to 20 MAR 2025