

# RNAV (RNP) Y RWY 30L

MINNEAPOLIS-ST PAUL INTL/WOLD-CHAMBERLAIN (MSP)

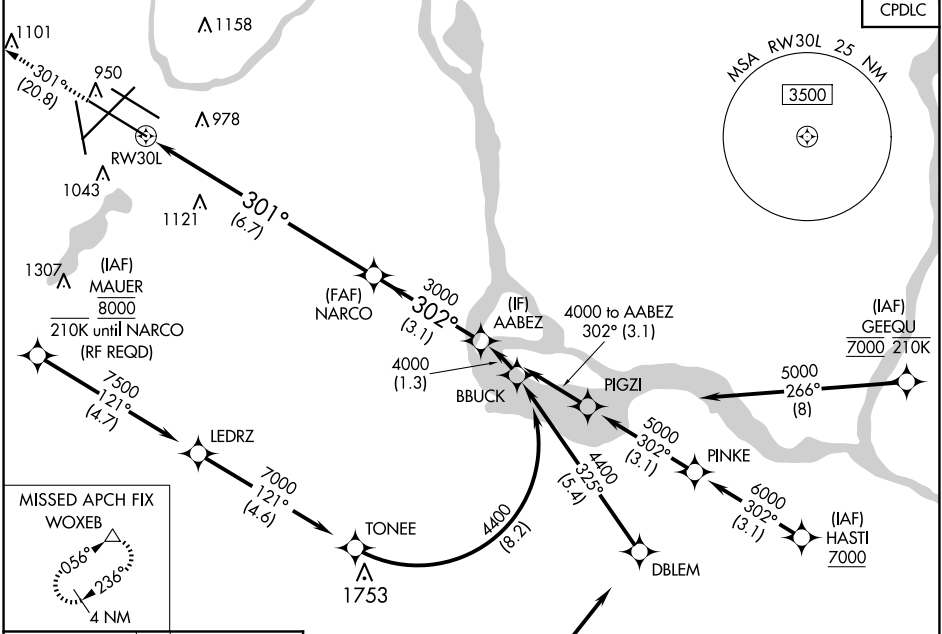
APP CRS <b>301°</b>	Rwy Idg <b>10000</b> TDZE <b>823</b> Apt Elev <b>842</b>
------------------------	--

For uncompensated Baro-VNAV systems, procedure NA below -19°C (-2°F) or above 54°C (130°F). GPS required. Simultaneous approaches authorized with Rwy 30R and ILS V RWY 35 (CONVERGING).

ALSF-2

MISSED APPROACH: Climb to 3000 on track 301° to WOXEB and hold.

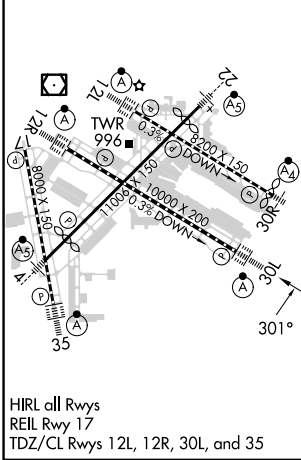
D-ATIS ARR <b>135.35</b> 239.275 DEP <b>120.8</b>	MINNEAPOLIS APP CON 118.725 335.65 (Rwy 35) 119.3 335.65 (12L-30R, 4-22, 17) 126.95 335.65 (12R-30L)	MINNEAPOLIS TOWER 123.675 273.55 (17-35) 123.95 273.55 (12L-30R) 126.7 273.55 (12R-30L, 4-22)	GND CON N <b>121.8 348.6</b> S <b>121.9 348.6</b> W <b>127.925 348.6</b>	CLNC DEL <b>133.2</b>
---	---	--	---	--------------------------



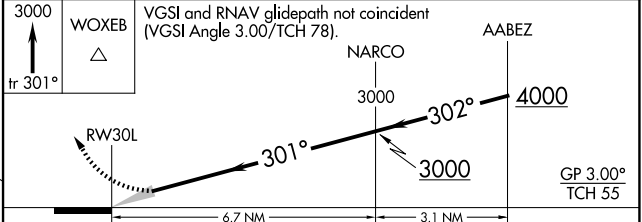
NC-1, 20 FEB 2025 to 20 MAR 2025

NC-1, 20 FEB 2025 to 20 MAR 2025

ELEV 842	<b>D</b>	TDZE 823
----------	----------	----------



HIRL all Rwys  
REIL Rwy 17  
TDZ/CL Rwys 12L, 12R, 30L, and 35



CATEGORY	A	B	C	D
RNP 0.30 DA	1150/30 327 (400-%)			

## AUTHORIZATION REQUIRED