

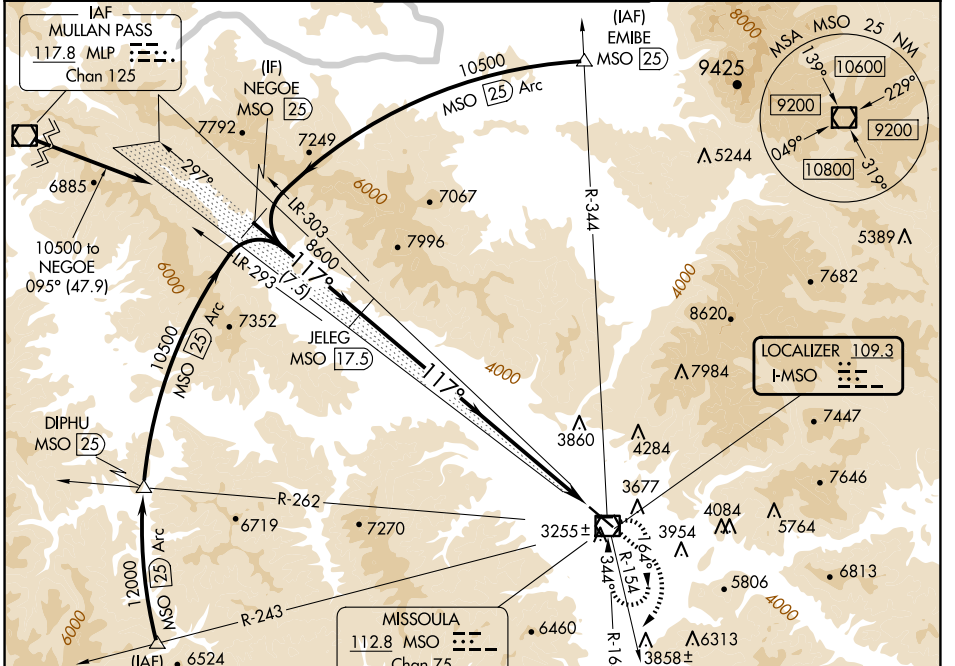
LOC I-MSO <b>109.3</b>	APP CRS <b>117°</b>	Rwy ldg TDZE Apt Elev <b>9501</b> <b>3200</b> <b>3206</b>
---------------------------	------------------------	--

# ILS Y RWY 12

MISSOULA MONTANA (MISO)

DME required.		MALSRL	MISSED APPROACH: Climb to 6200 then climbing right turn to 8500 on MSO VOR/DME R-154 then climbing left turn to 9100 direct MSO VOR/DME and hold.
NA Inoperative table does not apply. -12°C			

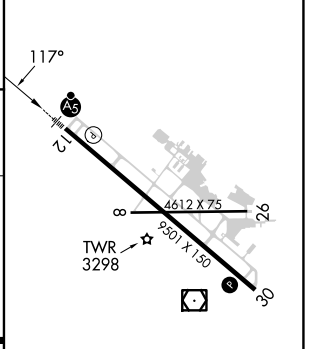
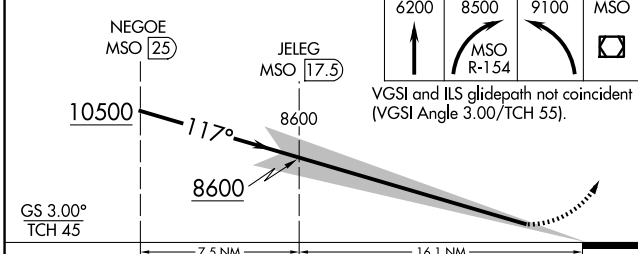
ATIS <b>126.65</b>	SPOKANE APP CON * <b>124.9 298.95</b>	MISSOULA TOWER * <b>118.4 (CTAF) 377.175</b>	GND CON <b>121.9</b>	UNICOM <b>122.95</b>
-----------------------	--	---	-------------------------	-------------------------



NW-1, 20 FEB 2025 to 20 MAR 2025

NW-1, 20 FEB 2025 to 20 MAR 2025

ELEV 3206		TDZE 3200
-----------	--	-----------



CATEGORY	A	B	C	D	REIL Rwy 30 MIRL Rwy 8-26 HIRL Rwy 12-30
S-ILS 12		5022-7	1822 (1900-7)		