

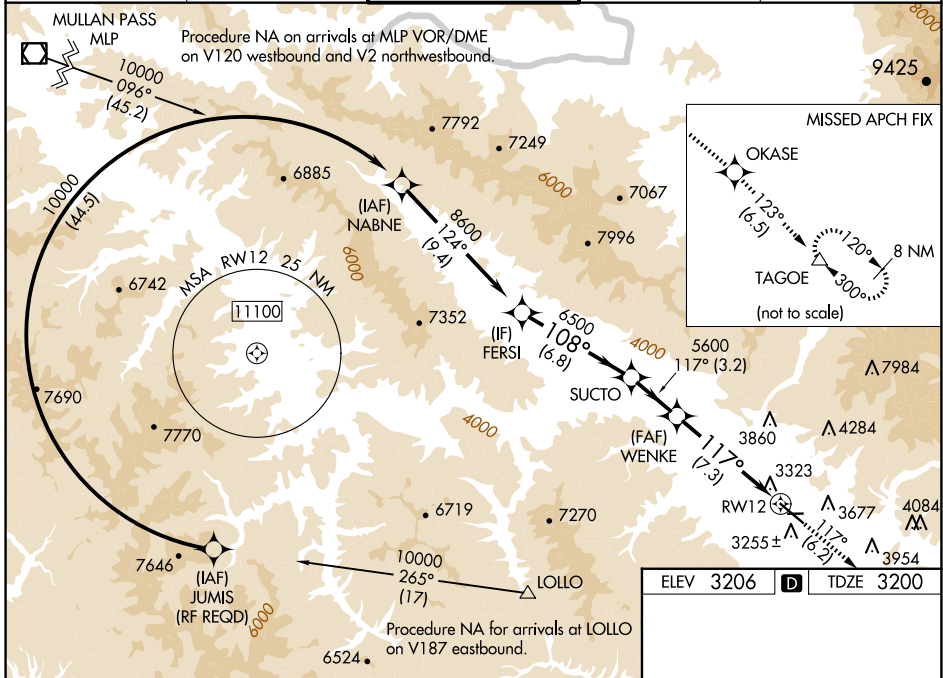
APP CRS	Rwy Idg	<b>9501</b>
<b>117°</b>	TDZE	<b>3200</b>
	Apt Elev	<b>3206</b>

# RNAV (RNP) Z RWY 12

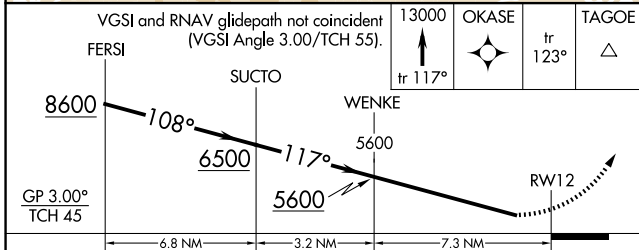
MISSOULA MONTANA (MISO)

RNP AR APCH.		MALSR 	MISSED APPROACH: Climb to 13000 on track 117° to OKASE and on track 123° to TAGOE and hold, continue climb-in-hold to 13000. *Missed approach requires minimum climb of 350 feet per NM to 8300; if unable to meet climb gradient, see RNAV (GPS) Y RWY 12. #Missed approach requires minimum climb of 425 feet per NM to 8300.
	For uncompensated Baro-VNAV systems, LNAV/VNAV NA below -21° C (-6°F) or above 43°C (109°F). For inop ALS, increase RNP 0.12 all Cats visibility to RVR 6000. For inop ALS, increase RNP 0.30 all Cats visibility to 2½ SM. When local weather not received, procedure NA.		

ATIS	SPOKANE APP CON*	MISSOULA TOWER*	GND CON	UNICOM
<b>126.65</b>	<b>124.9 298.95</b>	<b>118.4(CTAF) 377.175</b>	<b>121.9</b>	<b>122.95</b>

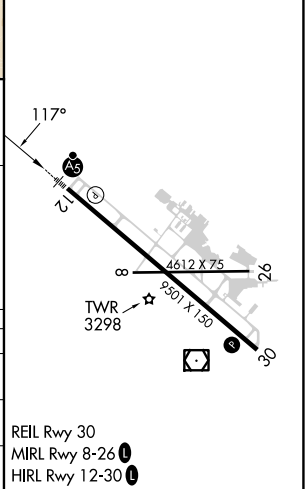


ELEV	3206	TDZE	3200
------	------	------	------



CATEGORY	A	B	C	D
RNP 0.12 DA#		3518/40	318 (400-¾)	
RNP 0.30 DA*		3880-2	680 (700-2)	

**AUTHORIZATION REQUIRED**



NW-1, 20 FEB 2025 to 20 MAR 2025

NW-1, 20 FEB 2025 to 20 MAR 2025