

WAAS CH <b>78128</b> <b>W18A</b>	APP CRS <b>183°</b>	Rwy ldg TDZE <b>4376</b> <b>217</b> Apt Elev <b>219</b>
--	------------------------	--

# RNAV (GPS) RWY 18

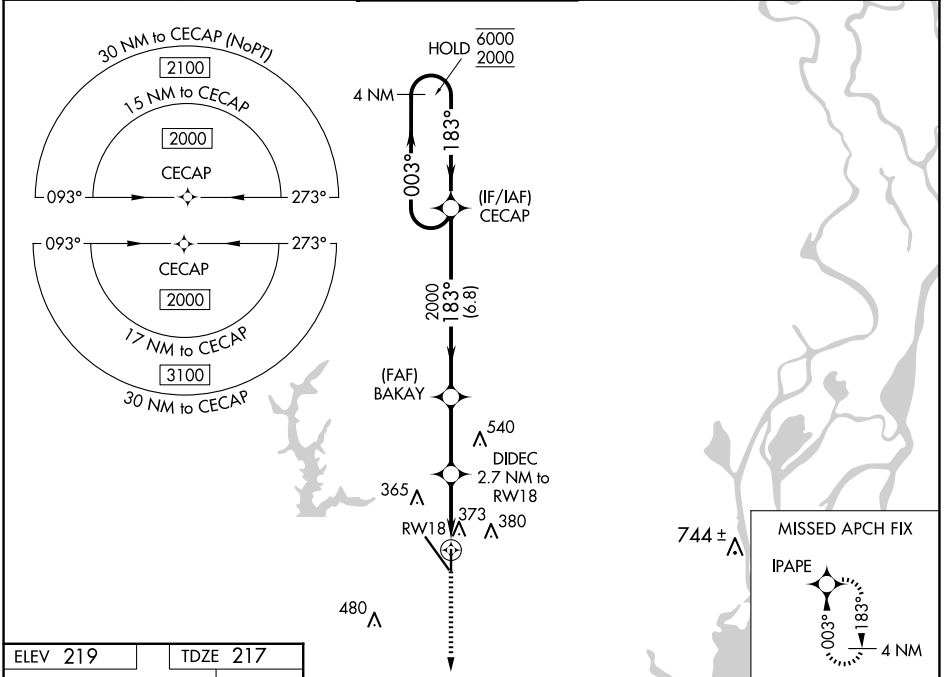
MOBILE RGNL (MOB)

RNP APCH - GPS.

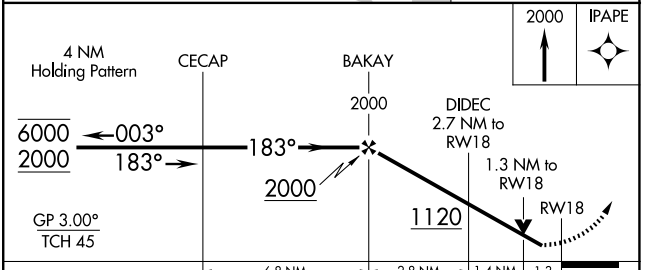
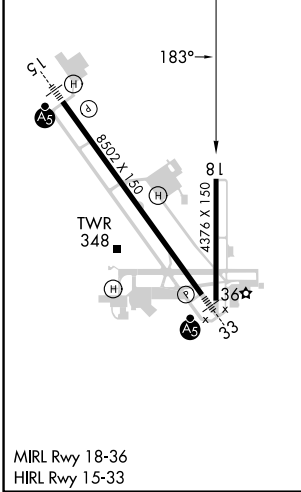
For uncompensated Baro-VNAV systems, LNAV/VNAV NA below -4°C or above 42°C. Rwy 18 helicopter visibility reduction below 3/4 SM NA.

MISSED APPROACH: Climb to 2000 direct IPAPE and hold.

ATIS <b>124.75 257.85</b>	MOBILE APP CON ★ <b>118.5 269.3</b>	MOBILE TOWER ★ <b>118.3 (CTAF) 239.0</b>	GND CON <b>121.9 348.6</b>	CLNC DEL <b>119.85</b>	UNICOM <b>122.95</b>
------------------------------	--	---	-------------------------------	---------------------------	-------------------------



ELEV 219	TDZE 217
----------	----------



CATEGORY	A	B	C	D
LPV DA	508-1 291 (300-1)			
LNAV/VNAV DA	624-1 3/8 407 (500-1 3/8)			
LNAV MDA	640-1	423 (500-1)	640-1 1/4	423 (500-1 1/4)
<b>C</b> CIRCLING	680-1	461 (500-1)	740-1 1/2	780-2 561 (600-2)

SE-4, 20 FEB 2025 to 20 MAR 2025

SE-4, 20 FEB 2025 to 20 MAR 2025