

WAAS CH <b>69306</b> <b>W33A</b>	APP CRS <b>327°</b>	Rwy Idg TDZE Apt Elev	<b>8502</b> <b>219</b> <b>219</b>
--	------------------------	-----------------------------	---

# RNAV (GPS) RWY 33

MOBILE RGNL (MOB)

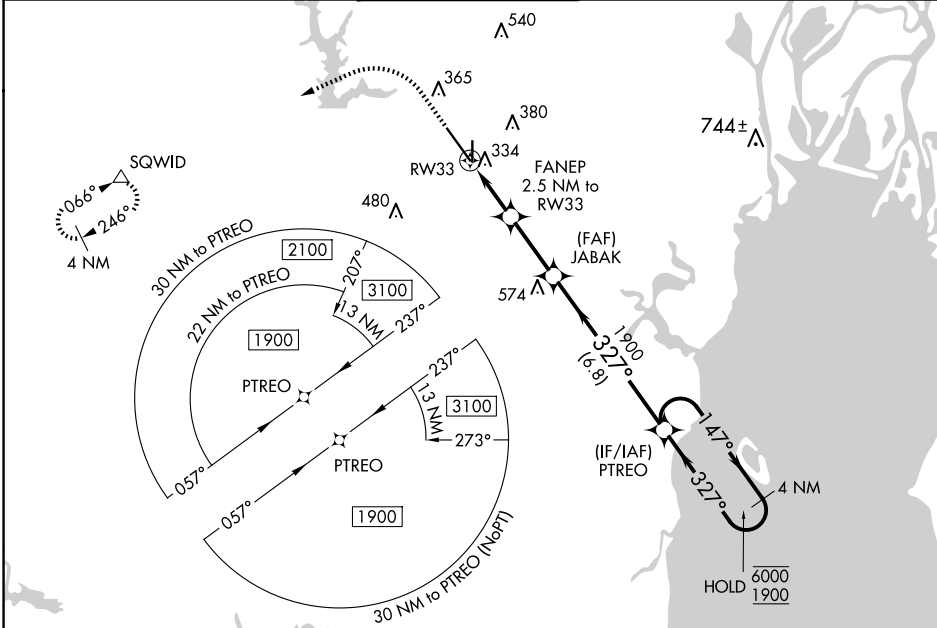
RNP APCH - GPS.

**ASR** For uncompensated Baro-VNAV systems, LNAV/VNAV NA below -4°C or above 54°C. For inop ALS, increase LNAV/VNAV all Cots visibility to RVR 4500.  
\* RVR 1800 authorized with use of FD or AP or HUD to DA.



**MISSED APPROACH:** Climb to 700 then climbing left turn to 2000 direct SQWID and hold.

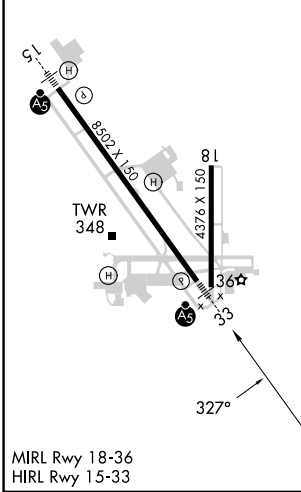
ATIS <b>124.75 257.85</b>	MOBILE APP CON ★ <b>118.5 269.3</b>	MOBILE TOWER ★ <b>118.3 (CTAF) 239.0</b>	GND CON <b>121.9 348.6</b>	CLNC DEL <b>119.85</b>	UNICOM <b>122.95</b>
------------------------------	--	---	-------------------------------	---------------------------	-------------------------



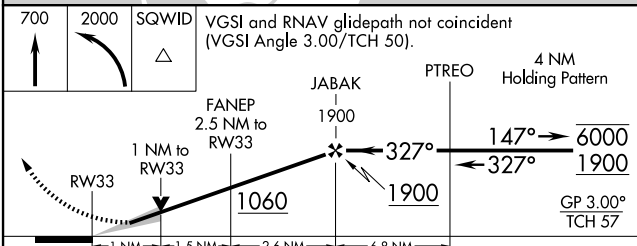
SE-4, 20 FEB 2025 to 20 MAR 2025

SE-4, 20 FEB 2025 to 20 MAR 2025

ELEV <b>219</b>	TDZE <b>219</b>
-----------------	-----------------



MIRL Rwy 18-36  
HIRL Rwy 15-33



CATEGORY	A	B	C	D
LPV DA*	419/24		200 (200-½)	
LNAV/VNAV DA	505/24		286 (300-½)	
LNAV MDA	600/24		381 (400-½)	600/35 381 (400-¾)
<b>C</b> CIRCLING	680-1	461 (500-1)	740-1½ 521 (600-1½)	780-2 561 (600-2)