

LOC/DME I-RUJ 108.5 Chan 22	APP CRS 320°	Rwy Idg 9618 TDZE 25 Apt Elev 26
--	------------------------	---

ILS or LOC RWY 32

MOBILE INTL (BFM)

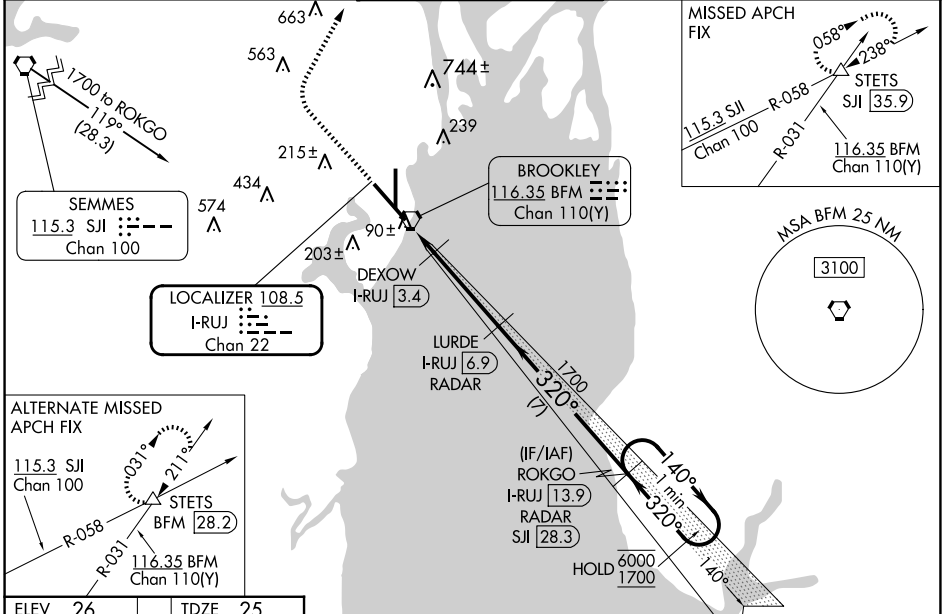
DME or RADAR required.

⚠ For inop ALS, increase S-LOC 32 Cat C/D visibility to 1¾ and DEXOW S-LOC 32 Cat C/D visibility to RVR 4500.

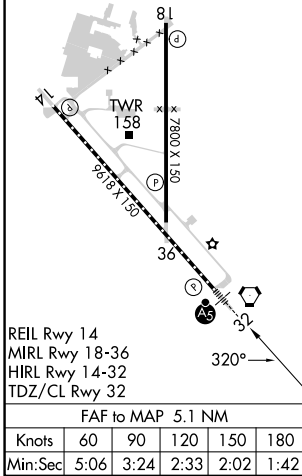
MALS R

MISSED APPROACH: Climb to 800 then climbing right turn to 2000 on heading 030° and on SJJ R-058 to STETS INT/SJJ 35.9 DME and hold.

ATIS 135.575	MOBILE APP CON ★ 118.5 269.3	INTERNATIONAL TOWER ★ 118.8 (CTAF) 251.1	GND CON 121.7 239.3	UNICOM 122.95
------------------------	--	--	-------------------------------	-------------------------



ELEV 26	TDZE 25
---------	---------



800	2000	SJJ R-058	STETS	VGSI and ILS glidepath not coincident (VGSI Angle 3.00/TCH 71).	LURDE I-RUJ 6.9 RADAR	ROKGO I-RUJ 13.9 RADAR	One Minute Holding Pattern
hdg 030°					DEXOW I-RUJ 3.4	1700	
		I-RUJ 1.8	I-RUJ 2.6			320°	140° → 6000 / ← 320° 1700
							GS 3.00° TCH 55

SE-4, 20 FEB 2025 to 20 MAR 2025

SE-4, 20 FEB 2025 to 20 MAR 2025