

WAAS CH <b>42515</b> <b>W13A</b>	APP CRS <b>126°</b>	Rwy Idg TDZE Apt Elev	<b>7032</b> <b>590</b> <b>590</b>
--	------------------------	-----------------------------	---

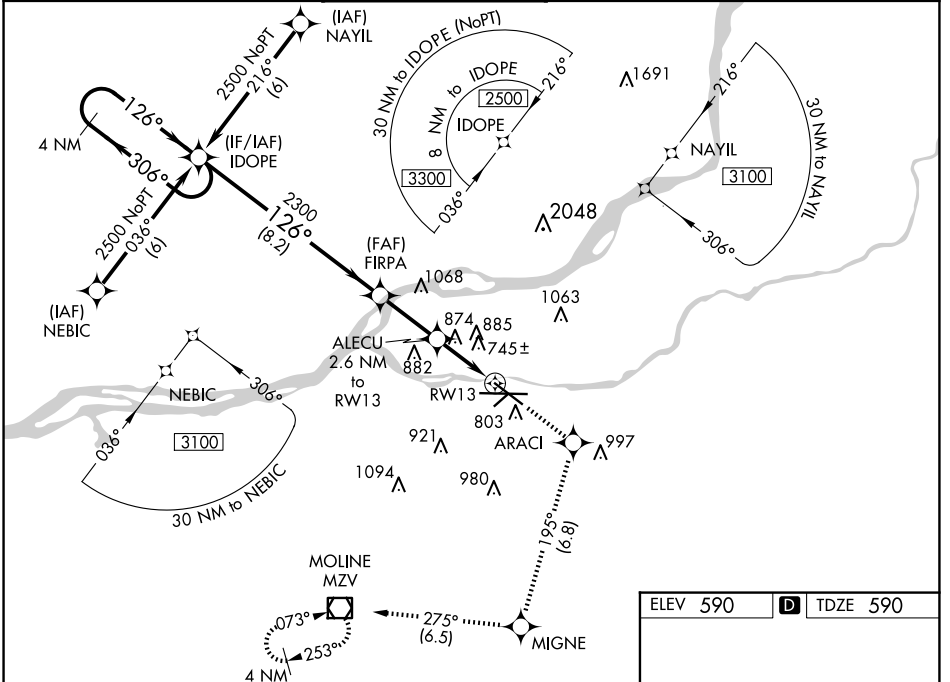
# RNAV (GPS) RWY 13

QUAD CITIES INTL (MLI)

**▼** Circling to Rwy 5 NA at night. For uncompensated Baro-VNAV systems, LNAV/VNAV NA below -16°C (4°F) or above 47°C (116°F). DME/DME RNP-0.3 NA. When local altimeter setting not received, use Davenport altimeter setting and increase LPV DA to 955 feet, LNAV/VNAV DA to 1339 feet and all MDA 60 feet; increase LPV all Cats, LNAV/VNAV all Cats, LNAV Cats C and D, and Circling Cats C and D visibility ¼ SM. Rwy 13 helicopter reduction below ¾ SM NA. VDP and Baro-VNAV NA when using Davenport altimeter setting.

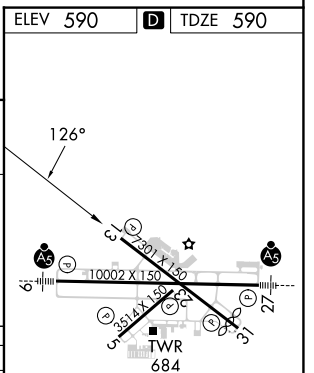
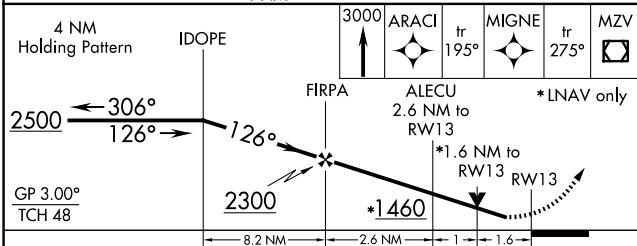
**▲** MISSED APPROACH: Climb to 3000 direct ARACI and on track 195° to MIGNE and on track 275° to MZV VOR/DME and hold.

ATIS <b>121.2</b>	QUAD CITY APP CON * <b>125.95 257.8</b>	QUAD CITY TOWER * <b>119.4(CTAF) 0 269.55</b>	GND CON <b>121.9</b>	CLNC DEL <b>124.05</b>	UNICOM <b>122.95</b>
----------------------	--	--	-------------------------	---------------------------	-------------------------



EC-3, 20 FEB 2025 to 20 MAR 2025

EC-3, 20 FEB 2025 to 20 MAR 2025



CATEGORY	A		B		C		D	
LPV DA	908-1 318 (400-1)							
LNAV/VNAV DA	1292-2½ 702 (800-2½)							
LNAV MDA	1140-1 550 (600-1)		1140-1½ 550 (600-1½)		1140-1¾ 550 (600-1¾)		1140-1¾ 550 (600-1¾)	
CIRCLING	1140-1 550 (600-1)		1200-1 610 (700-1)		1320-2 730 (800-2)		1420-2¾ 830 (900-2¾)	

HIRL Rwy 9-27 and 13-31  
MIRL Rwy 5-23  
REIL Rwy 13 and 31