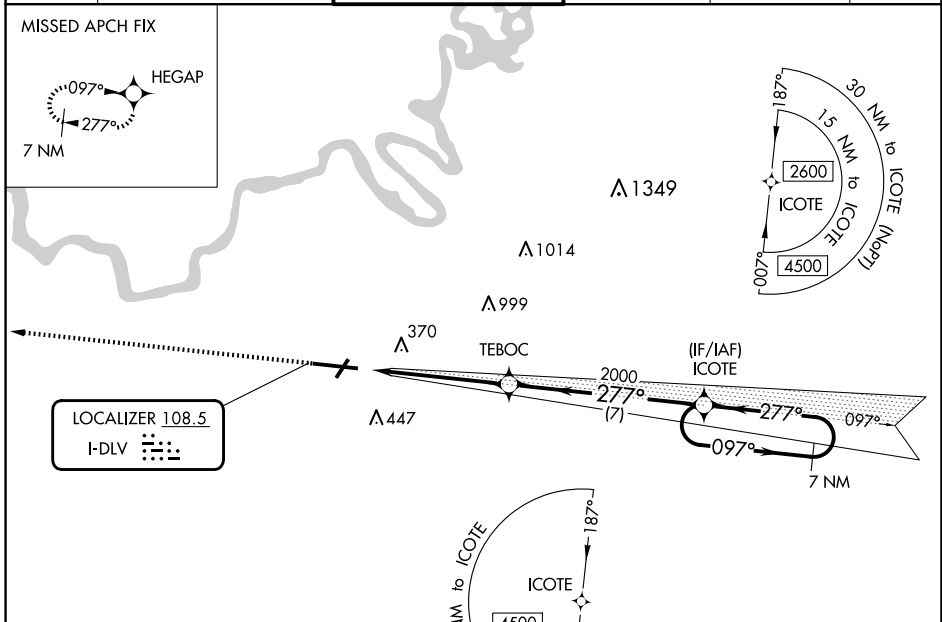


LOC I-DLV	APP CRS	Rwy Idg	9020
108.5	277°	TDZE	197
		Apt Elev	221

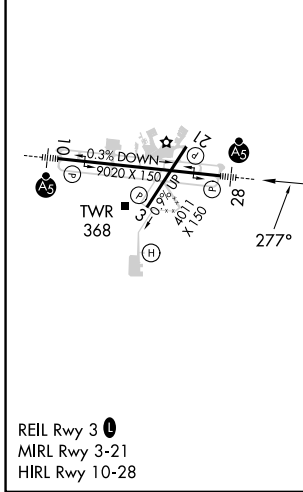
ILS Z RWY 28

MONTGOMERY RGNL (DANNELLY FLD) (MGM)

NA GPS required. For inop MALS, increase S-ILS 28 Cat E visibility to 3/4 mile.		MALS R 		MISSED APPROACH: Climb to 3100 direct HEGAP and hold.	
ATIS	MONTGOMERY APP CON *	DANNELLY TOWER *	GND CON	CLNC DEL	UNICOM
120.675	124.0 363.025	119.7 (CTAF) 0 360.85	121.7 348.6	118.3 270.3	122.95



ELEV 221	TDZE 197
----------	----------



GPS REQUIRED

3100	HEGAP	VGSIs and ILS glidepath not coincident (VGSi Angle 3.00/TCH 75).	ICOTE	7 NM Holding Pattern	
↑					
TEBOC	2000	277°	097°	2600	
	2000		← 277°		
				GS 3.00° TCH 56	
	5.5 NM	7 NM			
CATEGORY	A	B	C	D	E
S-ILS 28		397-1/2	200 (200-1/2)		

ILS Z RWY 28

SE-4, 20 FEB 2025 to 20 MAR 2025

SE-4, 20 FEB 2025 to 20 MAR 2025