

ILS or LOC/DME RWY 15

LOC I-MXF 109.3	APCH CRS 150°	Rwy Idg TDZE Arprt Elev 8008 171 171
---------------------------	-------------------------	--

[USAF]

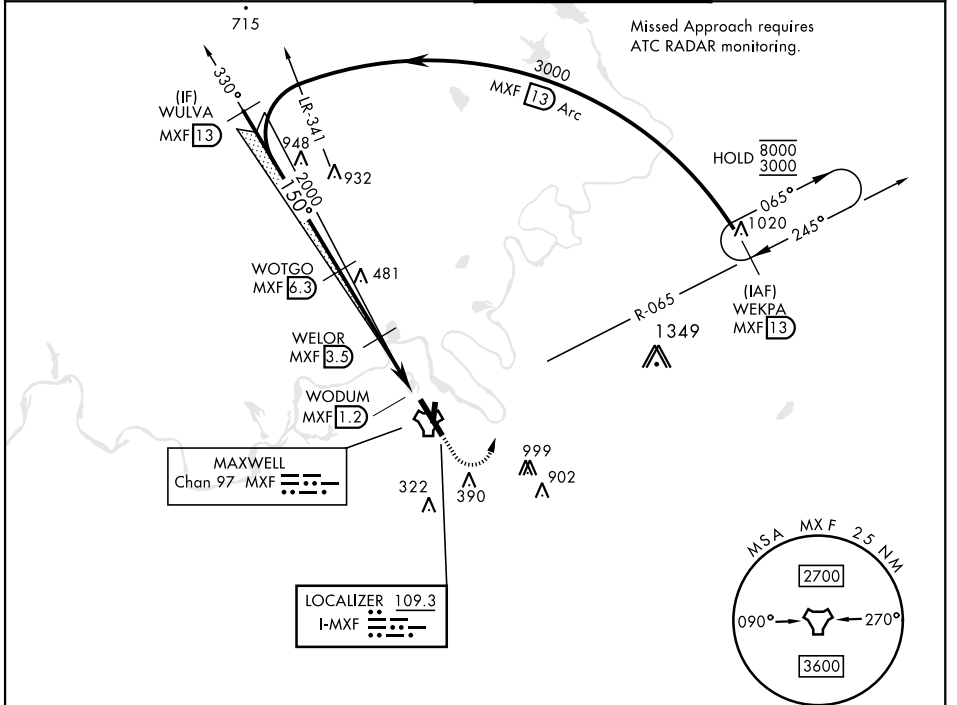
MAXWELL AFB (KMXF)

V * When ALS inop, increase RVR to 40 and vis to ¼ mile.
 ** When ALS inop, increase CAT AB RVR to 55 and vis to 1 mile, CAT CDE vis to 1½ mile.
 *** Circling not authorized E of Rwy 15-33.



MISSED APPROACH: Climb to 1000, then climbing left turn to 3000 to intercept MXF TACAN R-065 outbound to 13 DME (WEKPA) and hold.

ATIS ★ 134.7 269.9	MONTGOMERY APP CON ★ 121.2 269.05 (N) 124.0 363.025 (S)	TOWER ★ 118.15 253.5	GND CON ★ 127.15 289.4
------------------------------	---	--------------------------------	----------------------------------



SE-4, 20 FEB 2025 to 20 MAR 2025

SE-4, 20 FEB 2025 to 20 MAR 2025

EMERG SAFE ALT 100 NM 5000

	WULVA MXF 13		WOTGO MXF 6.3		WELOR MXF 3.5		WODUM MXF 1.2		WEKPA R-065 MXF 13	ELEV 171	TDZE 171	
	GS 3.00° TCH 51											
CATEGORY	A	B	C	D	E							
S-ILS 15 *	371/24		200	(200-½)								
S-LOC 15 **	600/24	429	(500-½)		600/40	429	(500-¾)					
*** CIRCLING	680-1	509	(600-1)		720-1½	549	(600-1½)		920-2½	749	(800-2½)	
											HIRL Rwy 15-33	

ILS or LOC/DME RWY 15