

# TACAN RWY 15

TACAN MXF Chan 97	APCH CRS 158°	Rwy ldg TDZE Arpt Elev	8008 171 171
----------------------	------------------	------------------------------	--------------------

[USAF]

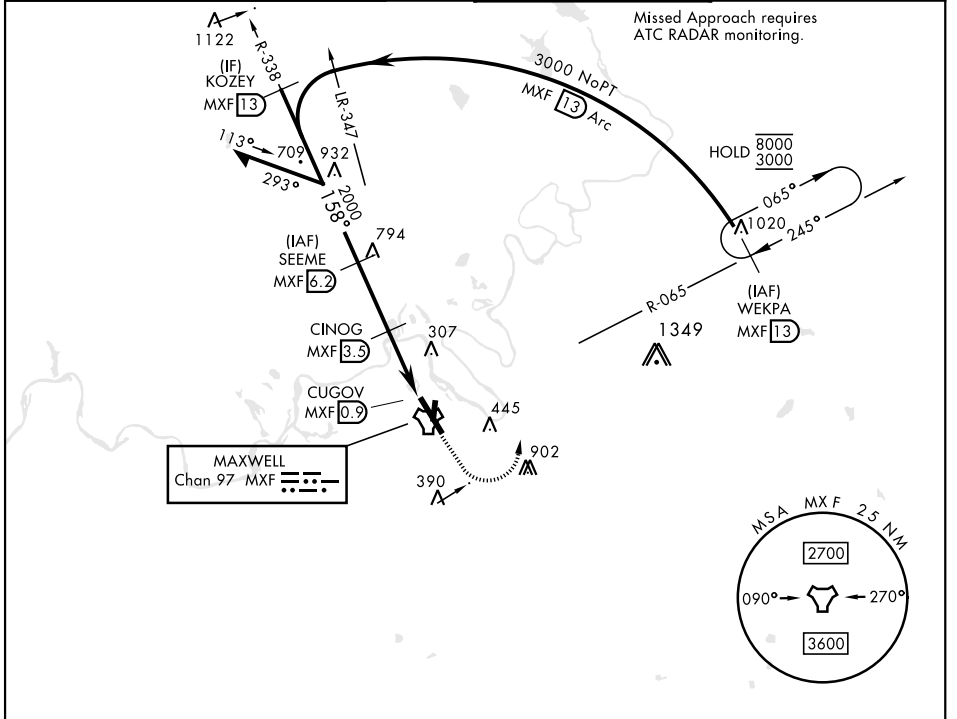
MAXWELL AFB (KMXF)

▼ \* When ALS inop, increase CAT AB RVR to 55 and vis to 1 mile, CAT CDE and vis to 1 1/2 miles.  
 \*\* Circling not authorized E of Rwy 15-33.



MISSED APPROACH: Climb to 1000, then climbing left turn to 3000 to intercept MXF TACAN R-065 outbound to 13 DME (WEKPA) and hold.

ATIS ★ 134.7 269.9	MONTGOMERY APP CON ★ 121.2 269.05 (N) 124.0 363.025 (S)	TOWER ★ 118.15 253.5	GND CON ★ 127.15 289.4
-----------------------	---	-------------------------	---------------------------



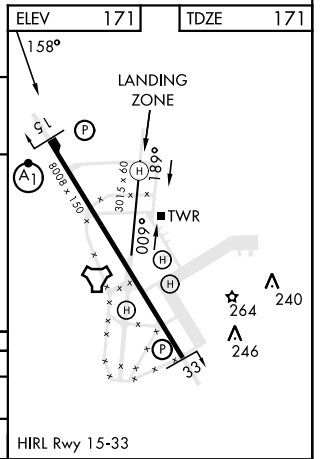
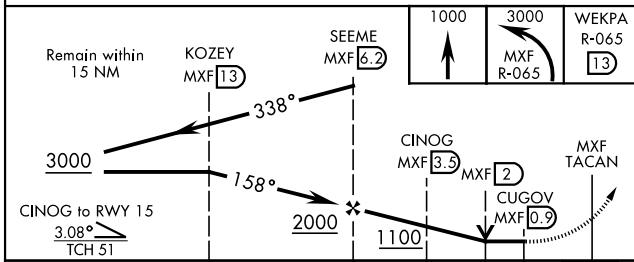
Missed Approach requires ATC RADAR monitoring.

SE-4, 20 FEB 2025 to 20 MAR 2025

SE-4, 20 FEB 2025 to 20 MAR 2025

ELEV 171	TDZE 171
----------	----------

EMERG SAFE ALT 100 NM 5000



CATEGORY	A	B	C	D	E
S-15 *	620/24	449 (500-1/2)	620/45	449 (500-7/8)	
CIRCLING **	680-1	509 (600-1)	720-1 1/2 549 (600-1 1/2)	920-2 1/2 749 (800-2 1/2)	NA

MONTGOMERY, ALABAMA 32°23'N-86°22' W MAXWELL AFB (KMXF)

Amdt 6 23FEB23

# TACAN RWY 15