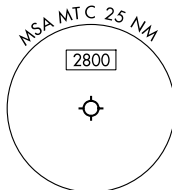


**TOP ALTITUDE:
ASSIGNED BY ATC**

RNAV 1 - DME/DME/IRU or GPS.

RADAR required.



SELFRIDGE DEP CON★
119.6 391.9
ATIS
125.325 270.1
CLNC DEL
128.3 275.8
GND CON
128.3 275.8
SELFRIDGE TOWER★
120.15 225.4



TAKEOFF MINIMUMS:

Rwy 1: Standard.
Rwy 19: Standard with minimum climb
of 235' per NM to 1500.

NOTE: Turbojet departures at/above 10000,
maintain 280K until advised by ATC.

NOTE: Chart not to scale.

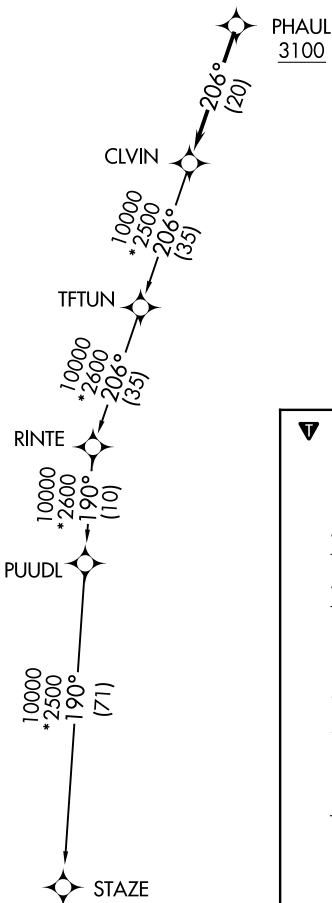
DEPARTURE ROUTE DESCRIPTION

TAKEOFF RUNWAY 1: Climb on heading 007° or as assigned by ATC, thence....

TAKEOFF RUNWAY 19: Climb on heading 187° or as assigned by ATC, thence....

....for RADAR vectors to cross PHAUL at or above 3100,
then on track 206° to CLVIN, then on (transition).
Maintain ATC assigned altitude, expect filed altitude
10 minutes after departure.

STAZE TRANSITION (CLVIN3.STAZE):



EC-1, 20 FEB 2025 to 20 MAR 2025

EC-1, 20 FEB 2025 to 20 MAR 2025