

HI-ILS or LOC Y RWY 19

LOC I-MTC 110.1	APCH CRS 187°	Rwy Idg TDZE Arpt Elev 9000 579 580
---------------------------	-------------------------	---

[USAF]

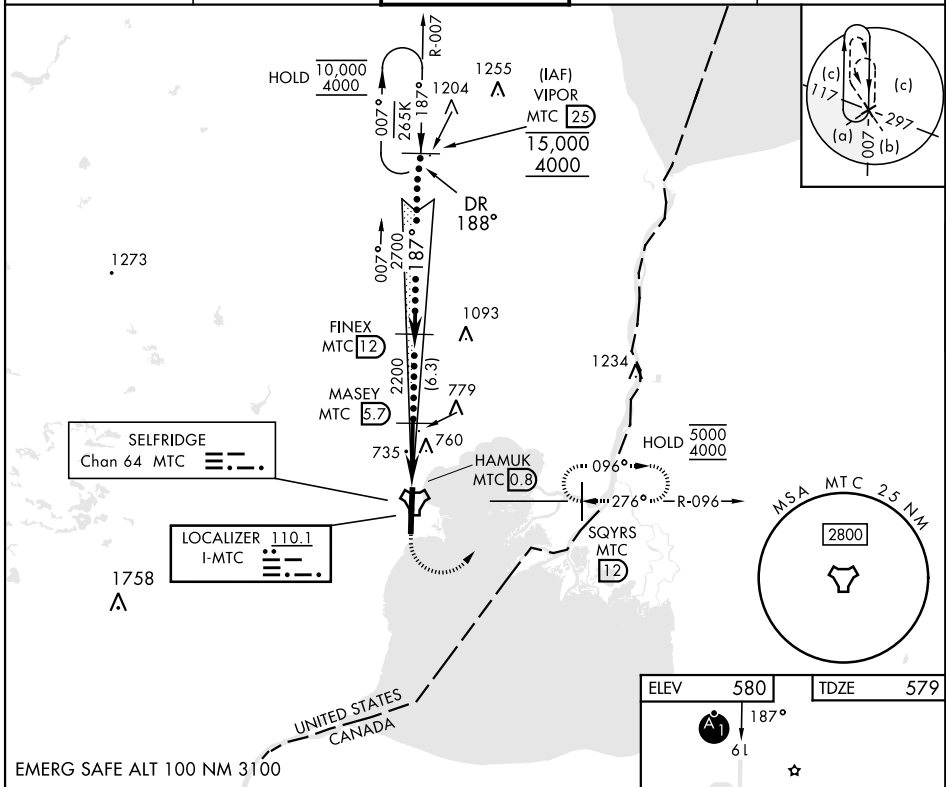
SELFRIDGE ANGB (KMTC)

▼ *When ALS inop, increase RVR to 40, vis to ¾ mile.
 **When ALS inop, increase vis to 1 ¾ miles.
 ***Circling not authorized W of Rwy 01-19.



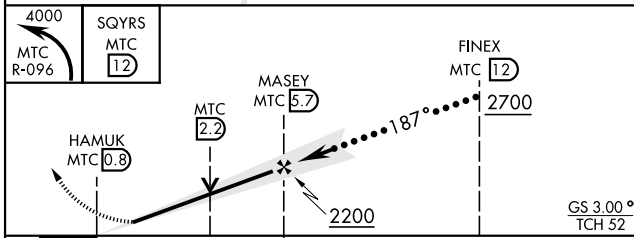
MISSED APPROACH: Climbing left turn to 4000, intercept MTC R-096 to SQYRS and hold, continue climb-in-hold to 4000.

ATIS 125.325 270.1	APP CON 119.6 318.2	TOWER ★ 120.15 (CTAF) 0 225.4	GND CON 128.3 275.8	CLNC DEL 128.3 275.8
------------------------------	-------------------------------	---	-------------------------------	--------------------------------



EC-1, 20 FEB 2025 to 20 MAR 2025

EC-1, 20 FEB 2025 to 20 MAR 2025



ELEV 580	TDZE 579
TWR 9000 x 150 01 HIRL Rwy 01-19 REIL Rwy 01-19	
FAF to MAP 4.9 NM	
Knots	120 140 160 180 200
Min:Sec	2:27 2:06 1:50 1:38 1:28

CATEGORY	C	D	E
S-ILS 19 *	779/24	200 (200-½)	
S-LOC 19 **	1060/50	481 (500-1)	
CIRCLING ***	1060-1½ 480 (500-1½)	1140-2	560 (600-2)

HI-ILS or LOC Y RWY 19