

MT. CLEMENS, MICHIGAN

HI-TACAN Y RWY 1

TACAN MTC Chan 64	APCH CRS 018°	Rwy ldg TDZE Arprt Elev 9000 580 580
-----------------------------	-------------------------	--------------------------------------------------------------------------

[USAF]

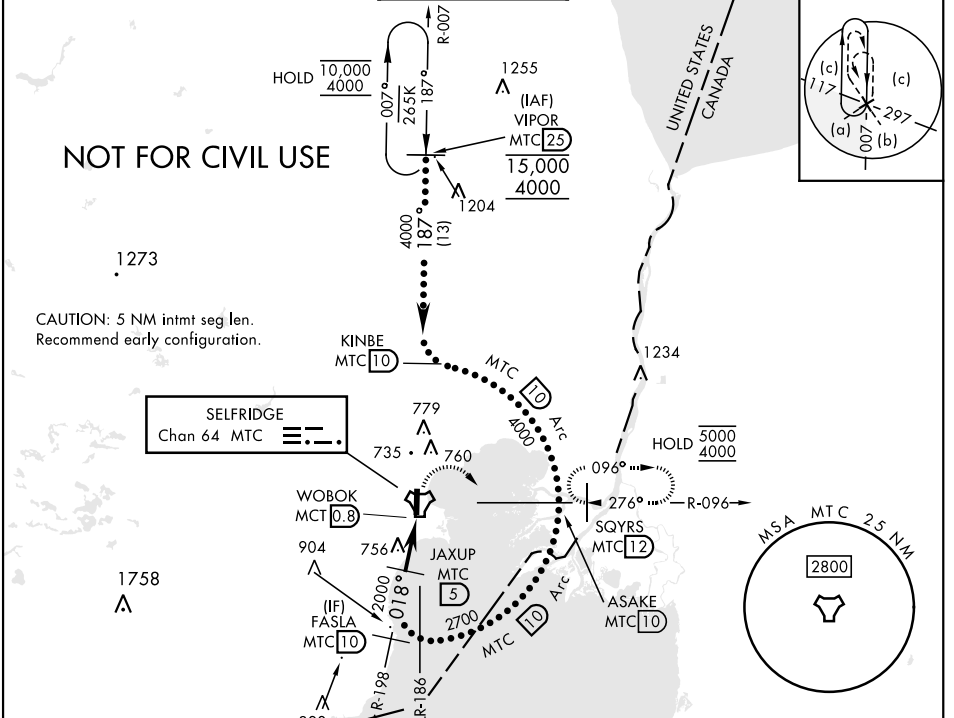
SELFRIDGE ANGB (KMTC)

▼ * When ALS inop, increase vis to 1 1/2 miles.
 ** Circling not authorized W of Rwy 01-19.

SALS

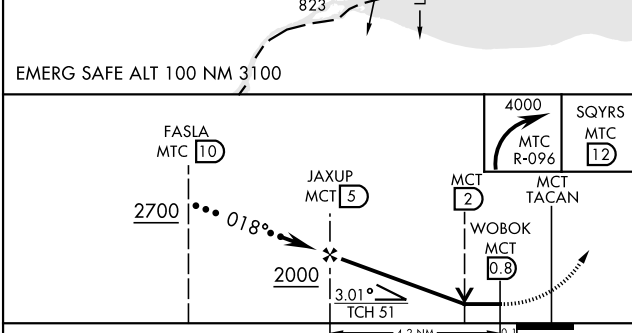
MISSED APPROACH: Climbing right turn to 4000, intercept MTC R-096 to SQYRS and hold, continue to climb in hold to 4000.

ATIS 125.325 270.1	APP CON 119.6 318.2	TOWER ★ 120.15 (CTAF) 0 225.4	GND CON 128.3 275.8	CLNC DEL 128.3 275.8
------------------------------	-------------------------------	-----------------------------------------	-------------------------------	--------------------------------



EC-1, 20 FEB 2025 to 20 MAR 2025

EC-1, 20 FEB 2025 to 20 MAR 2025



ELEV	580	TDZE	580
------	-----	------	-----

TWR

9000 x 150

01

018°

HIRL Rwy 01-19

REIL Rwy 01-19

CATEGORY	C	D	E
S-1*	1040/55	460 (500-1)	
CIRCLING **	1040-1 1/2 460 (500-1 1/2)	1140-2	560 (600-2)

MT. CLEMENS, MICHIGAN

42° 37' N-82° 50' W

SELFRIDGE ANGB (KMTC)

Amtd 3 26DEC24

HI-TACAN Y RWY 1