

# ILS or LOC Z RWY 1

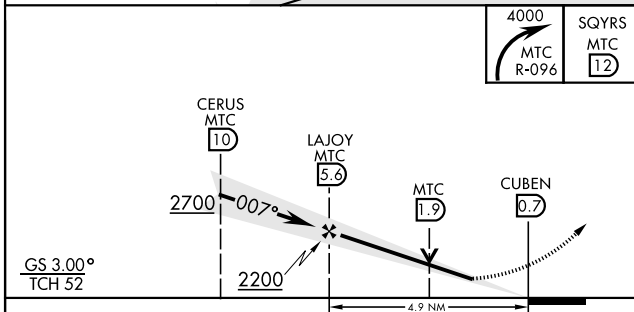
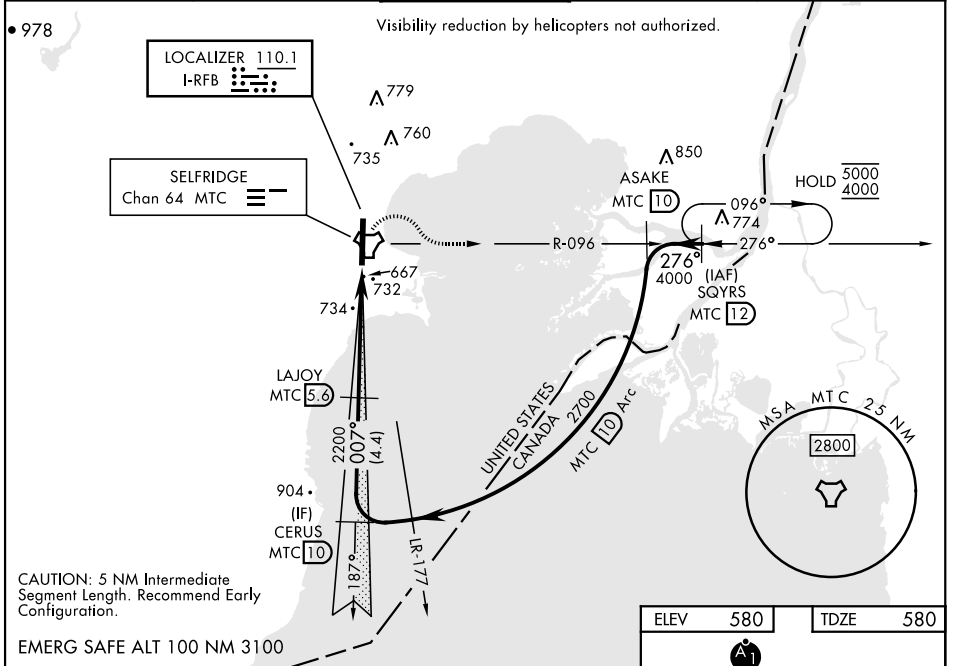
LOC I-RFB <b>110.1</b>	APCH CRS <b>007°</b>	Rwy Idg TDZE Arpt Elev <b>9000</b> <b>580</b> <b>580</b>	[USAF]	SELFRIDGE ANGB (KMTC)
---------------------------	-------------------------	---	--------	-----------------------

▽ \* When ALS inop, increase RVR to 45, vis to 7/8 mile.  
 \*\* When ALS inop, increase CAT AB RVR to 55 and vis to 1 mile; CAT CDE RVR to 60, vis to 1 1/8 miles.  
 \*\*\* Circling not authorized W of Rwy 01-19.

SALS  
A2

MISSED APPROACH: Climbing right turn to 4000, intercept MTC R-096 to SQYRS and hold, continue climb-in-hold to 4000.

ATIS <b>125.325 270.1</b>	SELFRIDGE APP CON <b>119.6 318.2</b>	SELFRIDGE TOWER ★ <b>120.15 (CTAF) 0 225.4</b>	GND CON <b>128.3 275.8</b>	CLNC DEL <b>128.3 275.8</b>
------------------------------	---	---	-------------------------------	--------------------------------



ELEV 580	TDZE 580
----------	----------

TWR  
 HIRL Rwy 01-19  
 REIL Rwy 01-19  
 FAF to MAP 4.9 NM

	Knots	60	90	120	150	180
	Min:Sec	4:54	3:16	2:27	1:58	1:38

CATEGORY	A	B	C	D	E
S-ILS 01*	873/40		293	(300-3/4)	
S-LOC 01**	1000/40	420 (500-3/4)	1000/50	420	(500-1)
CIRCLING ***	1040-1	460 (500-1)	1040-1 1/2 460 (500-1 1/2)	1140-2	560 (600-2)

# ILS or LOC Z RWY 1

EC-1, 20 FEB 2025 to 20 MAR 2025

EC-1, 20 FEB 2025 to 20 MAR 2025