

MT. CLEMENS, MICHIGAN

ILS or LOC Z RWY 19

LOC I-MTC 110.1	APCH CRS 187°	Rwy ldg TDZE Arprt Elev 9000 579 580
---------------------------	-------------------------	--

[USAF]

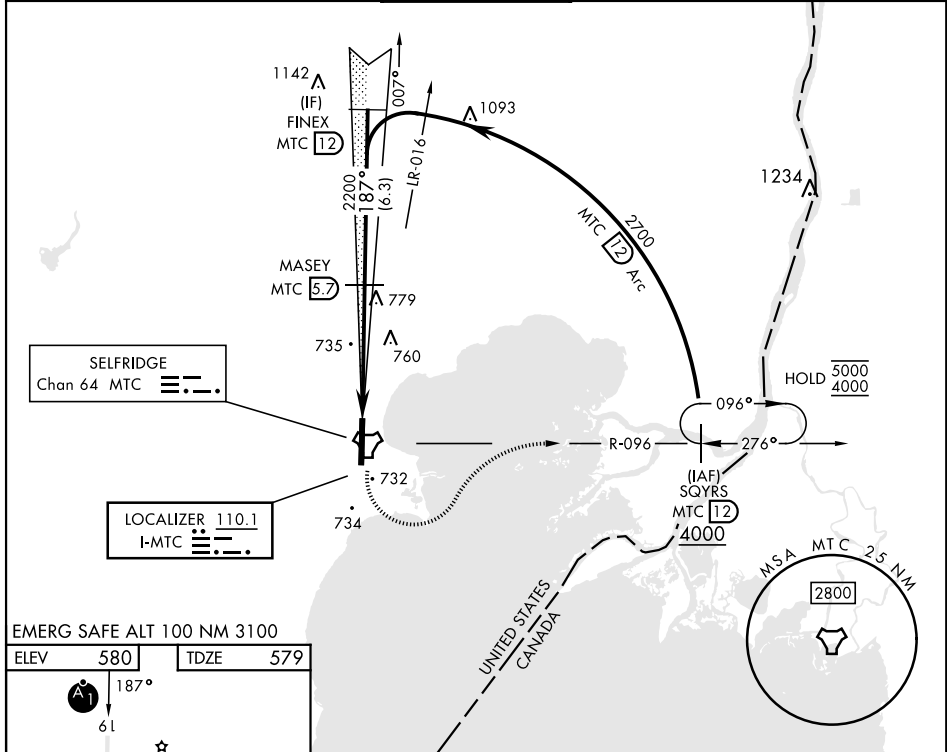
SELFRIDGE ANGB (KMTC)

- ▼ * When ALS inop, increase RVR to 40, vis to ¼ mile.
- ** When ALS inop, increase CAT AB RVR to 55, vis to 1 mile, CAT CDE vis to 1½ miles.
- *** Circling not authorized W of Rwy 01-19.



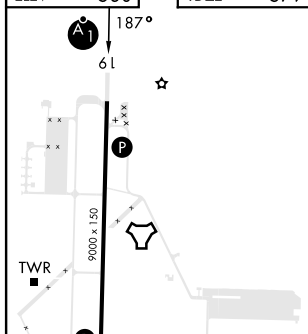
MISSED APPROACH: Climbing left turn to 4000, intercept MTC R-096 to SQYRS and hold, continue climb-in-hold to 4000.

ATIS 125.325 270.1	SELFRIDGE APP CON 119.6 318.2	SELFRIDGE TOWER ★ 120.15(CTAF) 225.4	GND CON 128.3 275.8	CLNC DEL 128.3 275.8
------------------------------	---	--	-------------------------------	--------------------------------



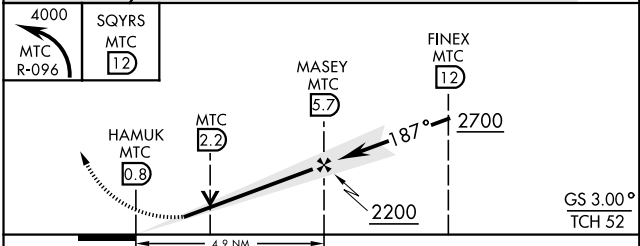
EMERG SAFE ALT 100 NM 3100

ELEV	580	TDZE	579
------	------------	------	------------



01 HIRL Rwy 01-19
REIL Rwy 01-19

FAF to MAP 4.9 NM					
Knots	60	90	120	150	180
Min:Sec	4:54	3:16	2:27	1:58	1:38



CATEGORY	A	B	C	D	E
S-ILS 19*	779/24		200	(200-½)	
S-LOC 19**	1060/24	481 (500-½)	1060/50	481 (500-1)	
CIRCLING ***	1060-1 480 (500-1)		1060-1½ 480 (500-1½)	1140-2 560 (600-2)	

MT. CLEMENS, MICHIGAN

42°37'N-82°50'W

SELFRIDGE ANGB (KMTC)

Amdt 4 26DEC24

ILS or LOC Z RWY 19

EC-1, 20 FEB 2025 to 20 MAR 2025

EC-1, 20 FEB 2025 to 20 MAR 2025