

MT. CLEMENS, MICHIGAN

TACAN Z RWY 19

| | | |
|-----------------------------|-------------------------|--|
| TACAN MTC Chan 64 | APCH CRS 177° | Rwy ldg TDZE Arprt Elev 9000 579 580 |
|-----------------------------|-------------------------|--|

[USAF]

SELFRIDGE ANGB (KMTC)

▼ * When ALS inop, increase CAT AB RVR to 55, vis to 1 mile, CAT CDE vis to 1½ miles.
 ** Circling not authorized W of Rwy 01-19.

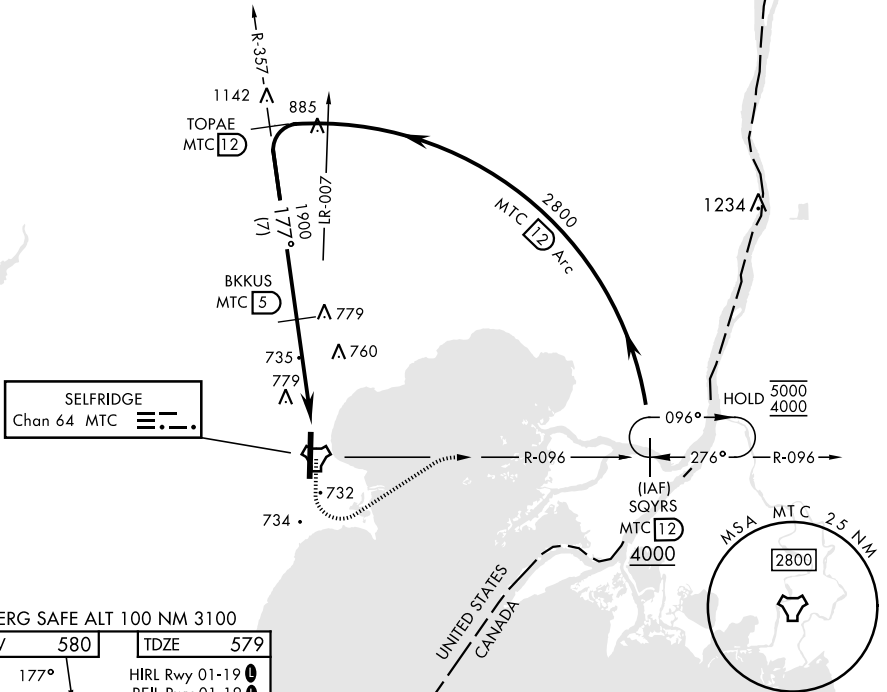
ALSF-1



MISSED APPROACH: Climbing left turn to 4000, intercept MTC R-096 to SQYRS and hold, continue climb-in-hold to 4000.

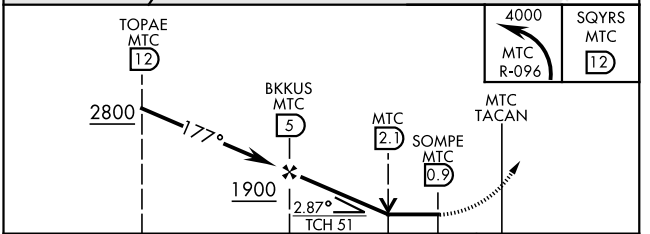
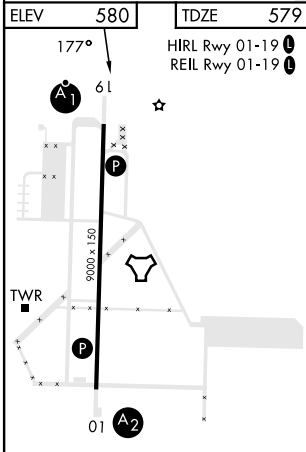
| | | | | |
|------------------------------|---|---|-------------------------------|--------------------------------|
| ATIS 125.325 270.1 | SELFRIDGE APP CON 119.6 318.2 | SELFRIDGE TOWER ★ 120.15 (CTAF) 225.4 | GND CON 128.3 275.8 | CLNC DEL 128.3 275.8 |
|------------------------------|---|---|-------------------------------|--------------------------------|

1138 Visibility reductions by helicopters not authorized.



SELFRIDGE
Chan 64 MTC

EMERG SAFE ALT 100 NM 3100



| CATEGORY | A | B | C | D | E |
|-------------|---------|-------------|-------------------------|-------------|-------------|
| S-19 * | 1040/40 | 461 (500-¾) | 1040/50 | 461 (500-1) | |
| CIRCLING ** | 1040-1 | 460 (500-1) | 1040-1½ 460 (500-1½) | 1140-2 | 560 (600-2) |

MT. CLEMENS, MICHIGAN
Amdt 4 26DEC24

42° 37' N-82° 50' W

SELFRIDGE ANGB (KMTC)

TACAN Z RWY 19

EC-1, 20 FEB 2025 to 20 MAR 2025

EC-1, 20 FEB 2025 to 20 MAR 2025