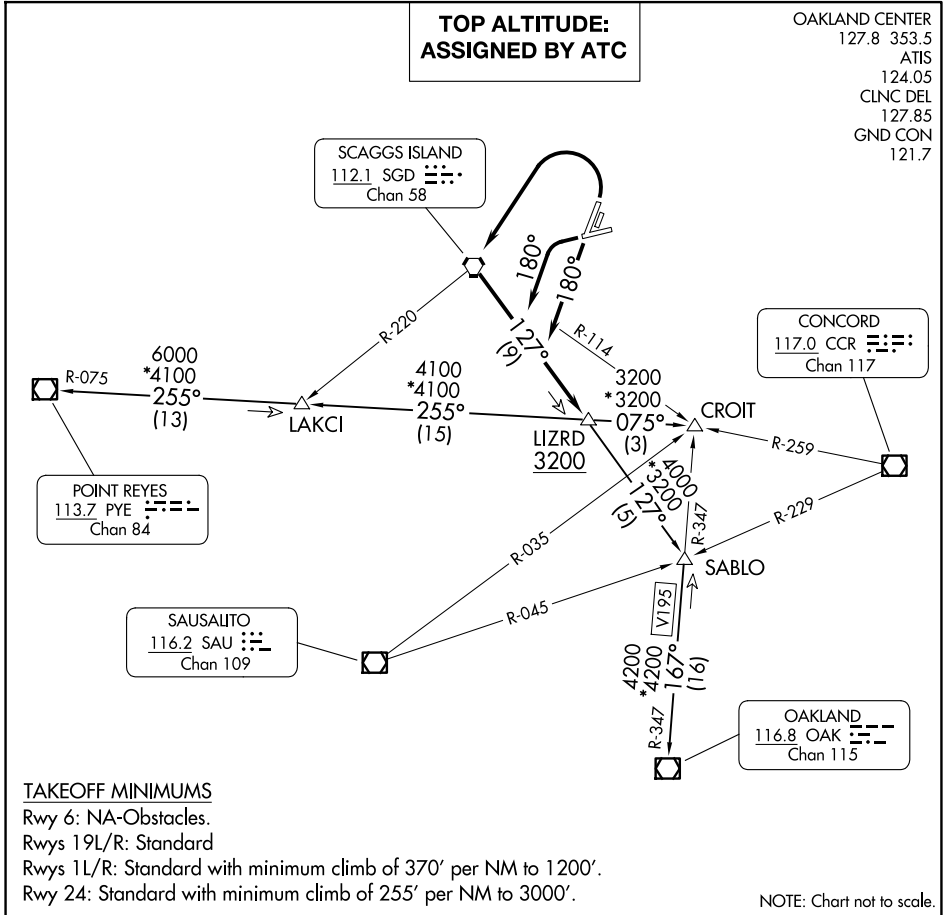


LIZRD FIVE DEPARTURE

AL-281 (FAA)

NAPA COUNTY (APC)
NAPA, CALIFORNIA



SW-2, 20 FEB 2025 to 20 MAR 2025

SW-2, 20 FEB 2025 to 20 MAR 2025

DEPARTURE ROUTE DESCRIPTION

TAKEOFF RUNWAYS 1L/R: Climbing left turn direct SGD VORTAC, proceed outbound on the SGD R-127 to LIZRD INT. Cross LIZRD INT at or above 3200. Thence. . .

TAKEOFF RUNWAYS 19L/R: Climb on heading 180° to intercept and proceed outbound on the SGD R-127 to LIZRD INT. Cross LIZRD INT at or above 3200. Thence. . .

TAKEOFF RUNWAY 24: Climbing left turn on heading 180° to intercept and proceed outbound on the SGD R-127 to LIZRD INT. Cross LIZRD INT at or above 3200. Thence. . .

. . . on (transition) or (assigned route). Maintain ATC assigned altitude.

CROIT TRANSITION (LIZRD5.CROIT): From over LIZRD on PYE R-075 to CROIT.

OAKLAND TRANSITION (LIZRD5.OAK): From over LIZRD on SGD R-127 and OAK R-347 to OAK VOR/DME.

POINT REYES TRANSITION (LIZRD5.PYE): From over LIZRD on PYE R-075 to PYE VOR/DME.

LIZRD FIVE DEPARTURE