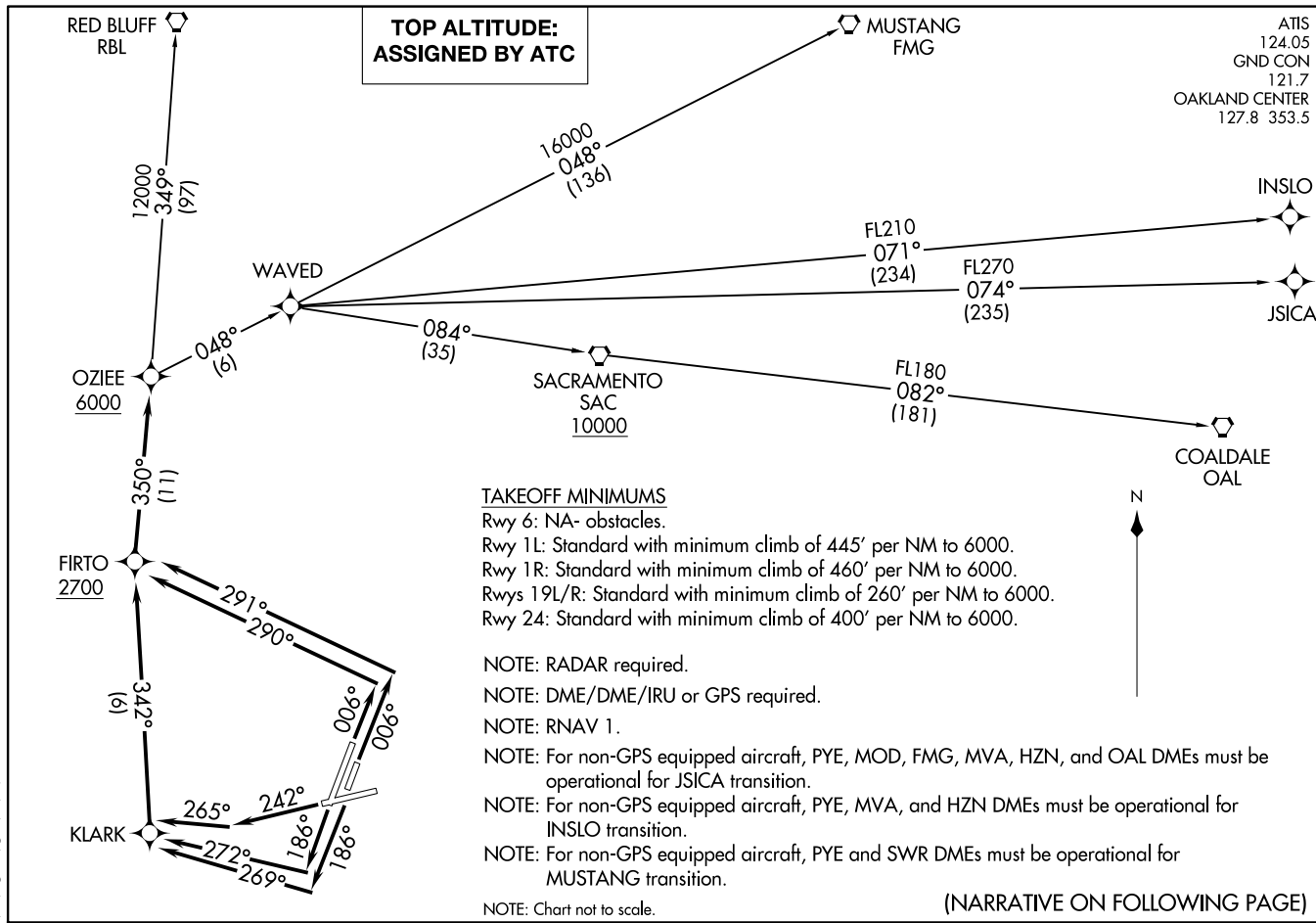


OZIEE FOUR DEPARTURE (RNAV)
(OZIEE4,OZIEE) 100CT19

NAPA, CALIFORNIA
NAPA COUNTY (ATPC)



TAKEOFF MINIMUMS

- Rwy 6: NA- obstacles.
- Rwy 1L: Standard with minimum climb of 445' per NM to 6000.
- Rwy 1R: Standard with minimum climb of 460' per NM to 6000.
- Rwys 19L/R: Standard with minimum climb of 260' per NM to 6000.
- Rwy 24: Standard with minimum climb of 400' per NM to 6000.

- NOTE: RADAR required.
- NOTE: DME/DME/IRU or GPS required.
- NOTE: RNAV 1.
- NOTE: For non-GPS equipped aircraft, PYE, MOD, FMG, MVA, HZN, and OAL DMEs must be operational for JSICA transition.
- NOTE: For non-GPS equipped aircraft, PYE, MVA, and HZN DMEs must be operational for INSLO transition.
- NOTE: For non-GPS equipped aircraft, PYE and SWR DMEs must be operational for MUSTANG transition.

NOTE: Chart not to scale.

(NARRATIVE ON FOLLOWING PAGE)

(OZIEE4,OZIEE) 19288
OZIEE FOUR DEPARTURE (RNAV)

AL-281 (FAA)

NAPA COUNTY (ATPC)
NAPA, CALIFORNIA

ATIS 124.05
GND CON 121.7
OAKLAND CENTER 127.8 353.5





DEPARTURE ROUTE DESCRIPTION

TAKEOFF RUNWAY 1L: Climb on heading 006° to intercept course 290° to FIRTO at or above 2700, then on track 350° to OZIEE at or above 6000, thence. . . .

TAKEOFF RUNWAY 1R: Climb on heading 006° to intercept course 291° to FIRTO at or above 2700, then on track 350° to OZIEE at or above 6000, thence. . . .

TAKEOFF RUNWAY 19L: Climb on heading 186° to intercept course 269° to KLARK, then on track 342° to FIRTO at or above 2700, then on track 350° to OZIEE at or above 6000, thence. . . .

TAKEOFF RUNWAY 19R: Climb on heading 186° to intercept course 272° to KLARK, then on track 342° to FIRTO at or above 2700, then on track 350° to OZIEE at or above 6000, thence. . . .

TAKEOFF RUNWAY 24: Climb on heading 242° to intercept course 265° to KLARK, then on track 342° to FIRTO at or above 2700, then on track 350° to OZIEE at or above 6000, thence. . . .

. . . .on (transition). Maintain ATC assigned altitude. Expect filed altitude 10 minutes after departure.

COALDALE TRANSITION (OZIEE4.OAL)

INSLO TRANSITION (OZIEE4.INSLO)

JSICA TRANSITION (OZIEE4.JSICA)

MUSTANG TRANSITION (OZIEE4.FMG)

RED BLUFF TRANSITION (OZIEE4.RBL)

SW-2, 20 FEB 2025 to 20 MAR 2025

SW-2, 20 FEB 2025 to 20 MAR 2025