

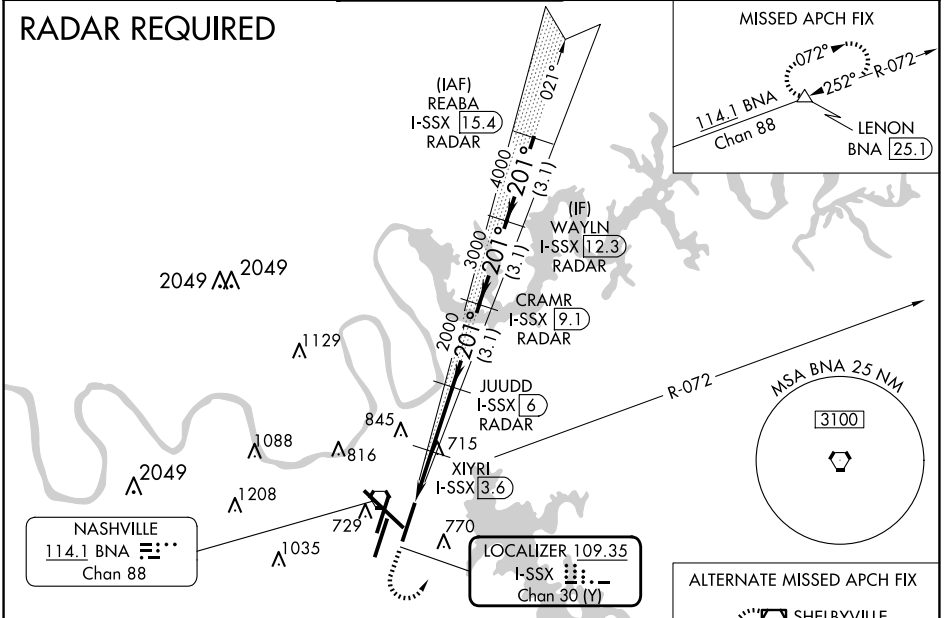
LOC/DME I-SSX <b>109.35</b> Chan 30 (Y)	APP CRS <b>201°</b>	Rwy Idg TDZE <b>8000</b> <b>551</b> Apt Elev <b>599</b>
---	------------------------	---

# ILS or LOC/DME RWY 20L

NASHVILLE INTL (BNA)

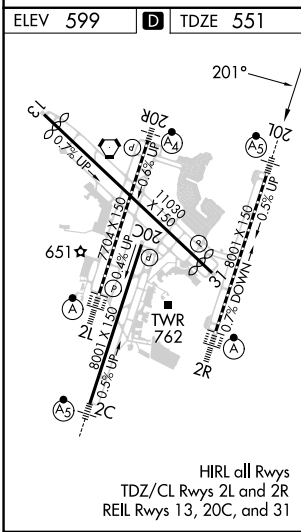
<b>▽</b> Simultaneous approach authorized with Rwy 20R. <b>▲</b> DME required. **RVR 1800 authorized with the use of FD or AP or HUD to DA.	MALSRR 	MISSED APPROACH: Climb to 1300 then climbing left turn to 3000 on heading 040° and BNA VORTAC R-072 to LENON/BNA 25.1 DME and hold.			
	D-ATIS <b>135.1</b>	NASHVILLE APP CON <b>118.4 360.7</b>	NASHVILLE TOWER <b>118.6 257.8</b>	GND CON <b>121.9 348.6</b>	CLNC DEL <b>126.05</b>

## RADAR REQUIRED



SE-1, 20 FEB 2025 to 20 MAR 2025

SE-1, 20 FEB 2025 to 20 MAR 2025



	1300	3000	BNA R-072	LENON	REABA I-SSX 15.4 RADAR	
	hdg 040°				WAYLN I-SSX 12.3 RADAR	
*LOC only.			XIYRI I-SSX 3.6	JUUDD I-SSX 6 RADAR	CRAMR I-SSX 9.1 RADAR	
	I-SSX 1.6	I-SSX 2.8				
	1220*	2000	2000	3000	4000	
	-1.2	-0.8	-2.4 NM	-3.1 NM	-3.1 NM	
CATEGORY	A		B		C	D
S-ILS 20L	** 751/24 200 (200-½)					
S-LOC 20L	980/24	429 (400-½)	980/40	429 (400-¾)		
<b>C</b> CIRCLING	1100-1 501 (600-1)	1120-1 521 (600-1)	1200-1¾ 601 (700-1¾)	1380-2½ 781 (800-2½)		

GS 3.00° TCH 55