


RNAV (RNP) Z RWY 2C

NASHVILLE INTL (BNA)

APP CRS	Rwy Idg	7601
021°	TDZE	587
	Apt Elev	599

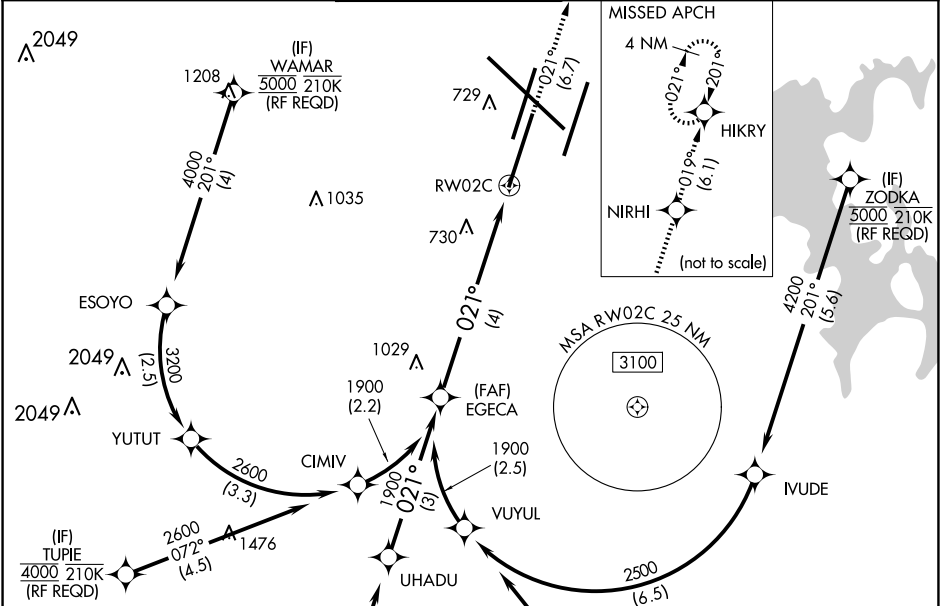
RNP AR APCH - GPS.

▼ For uncompensated Baro-VNAV systems, procedure NA below -11°C or above 54°C. Simultaneous approach authorized with Rwy 2R. Use of FD or AP providing RNAV track guidance required during simultaneous operations. For inop MALSR, increase RNP 0.30 visibility to 1½ mile.

MALSR 

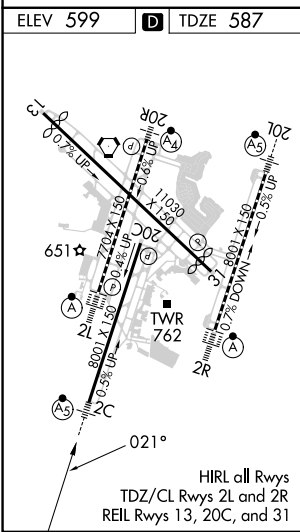
MISSED APPROACH: Climb to 4000 on track 021° to NIRHI and on track 019° to HIKRY and hold, continue climb-in-hold to 4000.

D-ATIS	NASHVILLE APP CON	NASHVILLE TOWER	GND CON	CLNC DEL	CPDLC
135.1	118.4 360.7	118.6 257.8	121.9 348.6	126.05	



SE-1, 20 FEB 2025 to 20 MAR 2025

SE-1, 20 FEB 2025 to 20 MAR 2025



EGECA 1900 See planview for multiple IF locations.

4000 tr 021° NIRHI tr 019° HIKRY

1900 021° RWY 2C

GP 3.00° TCH 60 VGSI and RNAV glidepath not coincident.

CATEGORY	A	B	C	D
RNP 0.15 DA		882/24	295 (300-½)	
RNP 0.30 DA		1067/57	480 (500-1½)	

AUTHORIZATION REQUIRED