


APP CRS	Rwy Idg	<b>7702</b>
<b>021°</b>	TDZE	<b>599</b>
	Apt Elev	<b>599</b>

# RNAV (RNP) Z RWY 2L

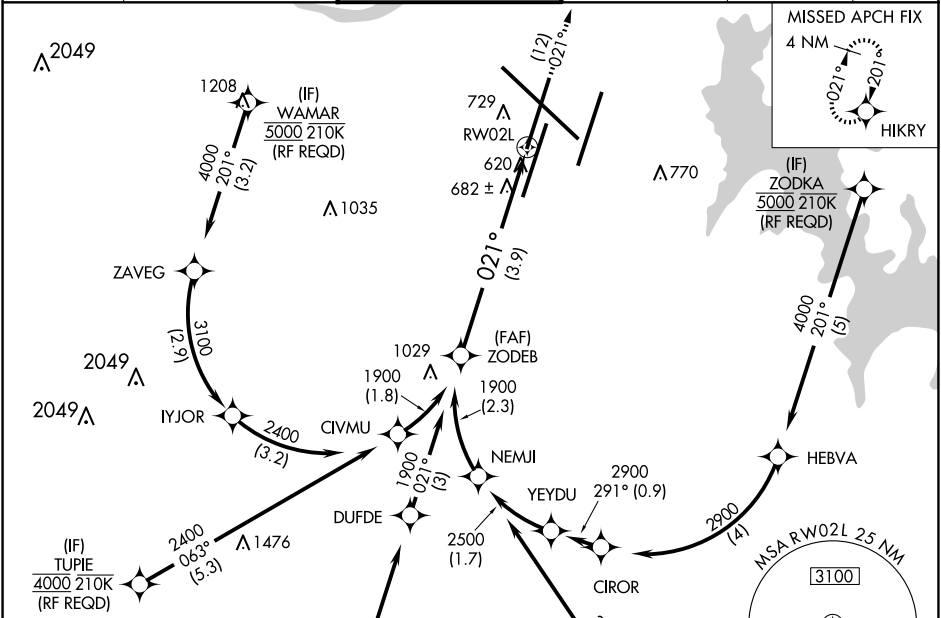
NASHVILLE INTL (BNA)

▼ For uncompensated Baro-VNAV systems, procedure NA below -11°C (13°F) or above 54°C (130°F). GPS required. Simultaneous approach authorized with Rwy 2R. For inop ALSF-2, increase RNP 0.15 all Cats visibility to RVR 4700, increase RNP 0.30 all Cats visibility to 1 ¼ mile. Use of FD or AP providing RNAV track guidance required during simultaneous operations.

ALSF-2 

MISSED APPROACH: Climb to 4000 on track 021° to HIKRY and hold, continue climb-in-hold to 4000.

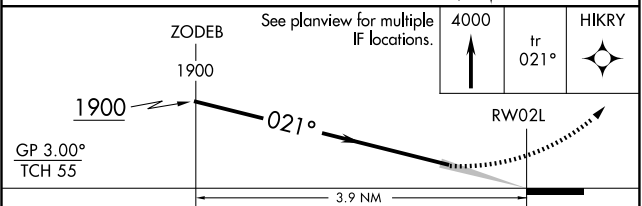
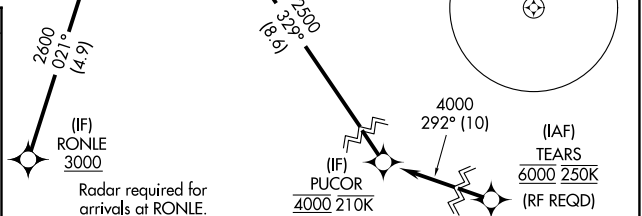
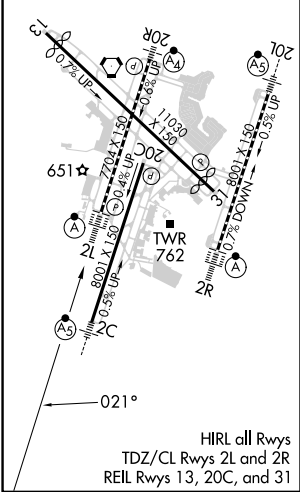
D-ATIS	NASHVILLE APP CON	NASHVILLE TOWER	GND CON	CLNC DEL	CPDLC
<b>135.1</b>	<b>118.4 360.7</b>	<b>118.6 257.8</b>	<b>121.9 348.6</b>	<b>126.05</b>	



SE-1, 20 FEB 2025 to 20 MAR 2025

SE-1, 20 FEB 2025 to 20 MAR 2025

ELEV 599	<b>D</b>	TDZE 599
----------	----------	----------



CATEGORY	A	B	C	D
RNP 0.15 DA		898/24	299 (300-½)	
RNP 0.30 DA		991/41	392 (400-¾)	

## AUTHORIZATION REQUIRED