

RNAV (RNP) Z RWY 2R

NASHVILLE INTL (BNA)

APP CRS	Rwy Idg	8000
021°	TDZE	590
	Apt Elev	599

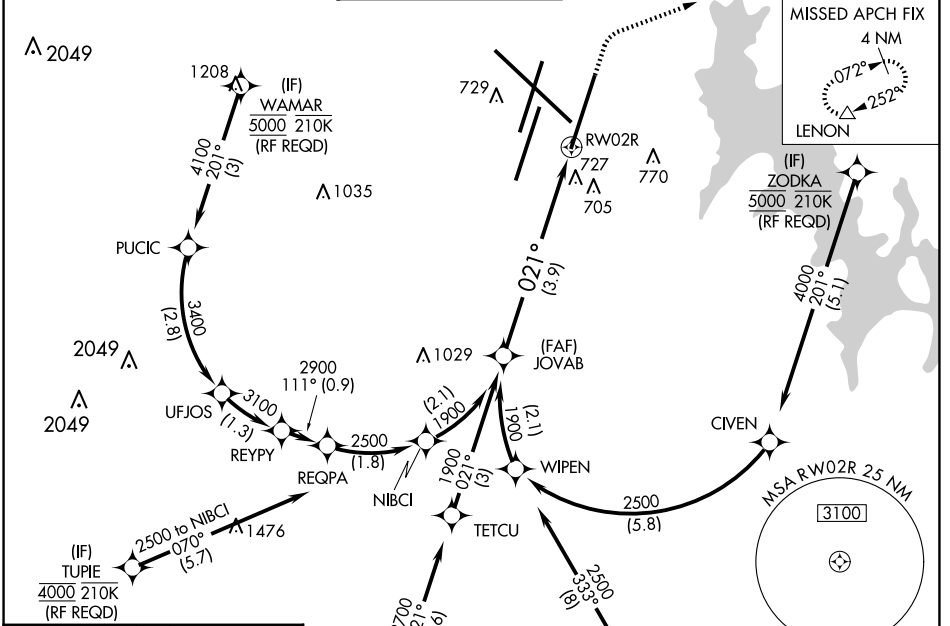
RNP AR APCH.

For uncompensated Baro-VNAV systems, procedure NA below -11°C or above 54°C.
 For inoperative ALSF-2, increase RNP 0.15 all Cats visibility to RVR 5600, RNP 0.30 all Cats visibility to 1 3/8 mile. Simultaneous approach authorized with Rwy 2L/C. Use of FD or AP providing RNAV track guidance required during simultaneous operations.

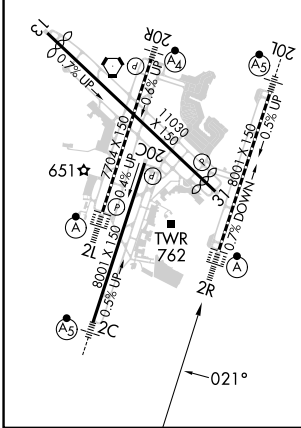
ALSF-2

MISSED APPROACH: Climb to 1300 then climbing right turn to 4000 direct LENON and hold.

D-ATIS	NASHVILLE APP CON	NASHVILLE TOWER	GND CON	CLNC DEL	CPDLC
135.1	118.4 360.7	118.6 257.8	121.9 348.6	126.05	



ELEV 599	TDZE 590
HIRL all Rwys	
TDZ/CL Rwys 2L and 2R	
REIL Rwys 13, 20C, and 31	



Radar required for procedure entry at ATKNS.

(IF) TUPIE 4000 210K (RF REQD) 2500 to NIBCI 070° (5.7)

(IF) JOVAB 1900 021° (3.9)

(IF) WIPEN 1900 021° (3)

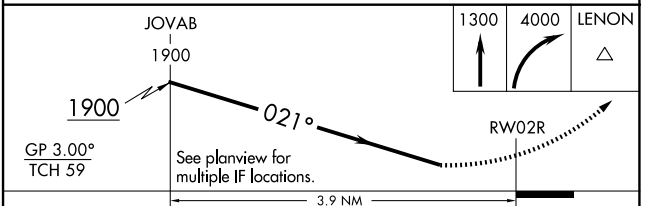
(IF) CIVEN 4000 201° (5.1)

(IF) LENON 4000 201° (5.1)

(IF) ATKNS 3000

(IF) PUCOR 4000 210K

(IAF) TEARS 6000 250K (RF REQD)



CATEGORY	A	B	C	D
RNP 0.15 DA		938/40	348 (400-3/4)	
RNP 0.30 DA		1024/48	434 (500-1)	

AUTHORIZATION REQUIRED

SE-1, 20 FEB 2025 to 20 MAR 2025

SE-1, 20 FEB 2025 to 20 MAR 2025