

APP CRS	Rwy Idg	9487
316°	TDZE	578
	Apt Elev	599

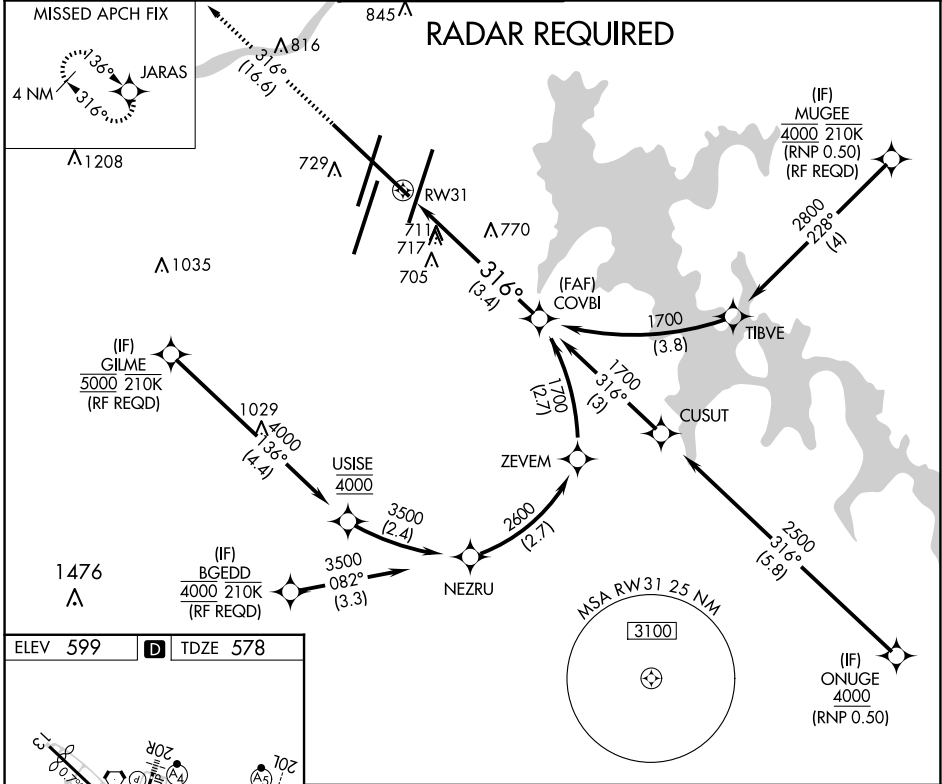
RNAV (RNP) Z RWY 31

NASHVILLE INTL (BNA)

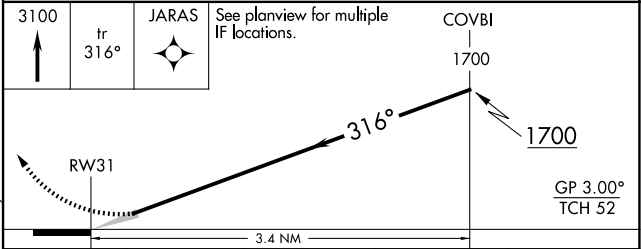
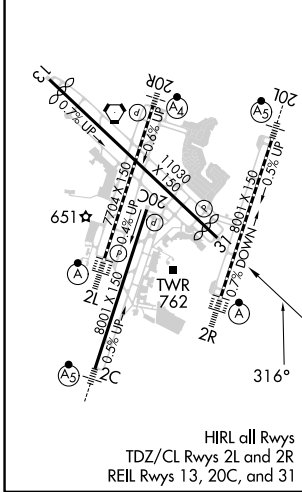
For uncompensated Baro-VNAV systems, procedure NA below -16°C (4°F) or above 54°C (130°F). GPS required.

MISSED APPROACH: Climb to 3100 on track 316° to JARAS and hold.

D-ATIS	NASHVILLE APP CON	NASHVILLE TOWER	GND CON	CLNC DEL	CPDLC
135.1	118.4 360.7	118.6 257.8	121.9 348.6	126.05	



ELEV	599	D	TDZE	578
------	------------	----------	------	------------



CATEGORY	A	B	C	D
RNP 0.25 DA		1025-1½	447 (500-1½)	
RNP 0.30 DA		1099-1¾	521 (600-1¾)	

AUTHORIZATION REQUIRED

SE-1, 20 FEB 2025 to 20 MAR 2025

SE-1, 20 FEB 2025 to 20 MAR 2025