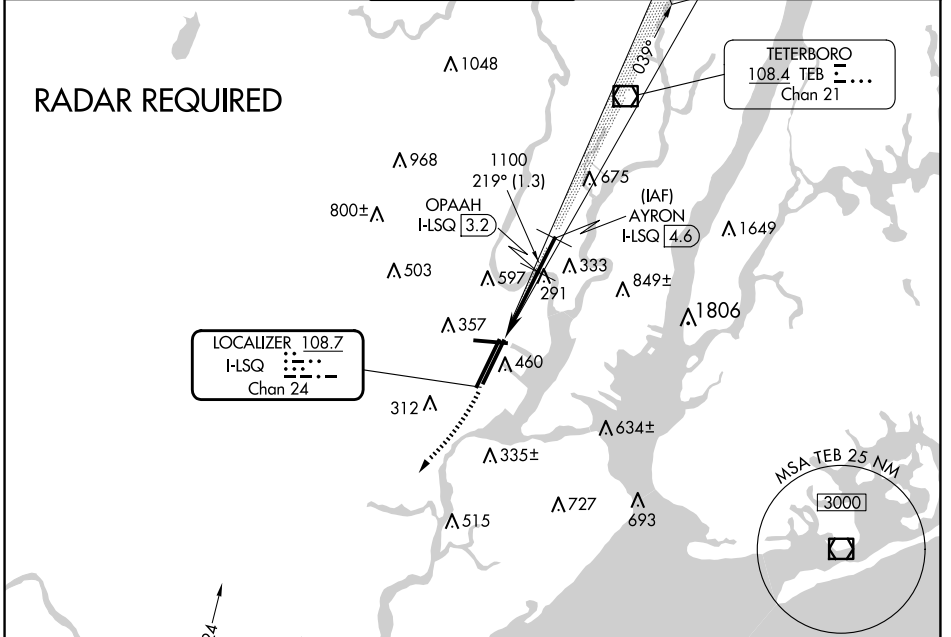


LOC/DME I-LSQ 108.7 Chan 24	APP CRS 219°	Rwy ldg 8207 TDZE 11 Apt Elev 18
---	------------------------	---

COPTER ILS/DME RWY 22L

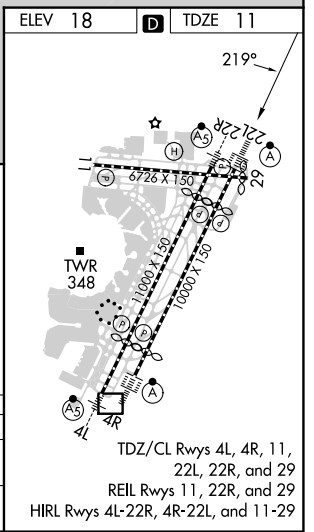
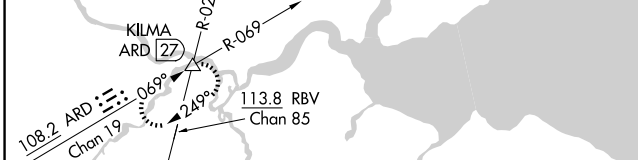
NEWARK LIBERTY INTL (EWR)

▼		ALSf-2 	MISSED APPROACH: Climbing right turn to 2000 heading 225° then climbing right turn to 3000 via ARD R-069 to KILMA INT and hold.			
D-ATIS 115.7 134.825	NEWARK APP CON 128.55 379.9	NEWARK TOWER 118.3 257.6	GND CON 121.8	CLNC DEL 118.85	CPDLC	



NE-2, 20 FEB 2025 to 20 MAR 2025

NE-2, 20 FEB 2025 to 20 MAR 2025



2000 hdg 225°	3000	ARD R-069	KILMA △	VGSi and ILS glidepath not coincident (VGSi Angle 3.00/TCH 60). OPAAH I-LSQ 3.2 AYRON I-LSQ 4.6
H-LSQ 0.2 H-LSQ 1.7 1091 219° 1500 1100 GS 3.00° HCH 43				
CATEGORY COPTER				
H-ILS 22L		211/12 200 (200-¼)		
H-LOC 22L		560/12 549 (600-¼)		

COPTER ILS/DME RWY 22L