

DEVIL ONE DEPARTURE
(DEVIL1.EWR) 30NOV23

DEVIL ONE DEPARTURE
(DEVIL1.EWR) 24Z27

A1-285 (FAA)

NEWARK LIBERTY INTL (EWR)
NEWARK, NEW JERSEY

NEWARK DEP CON
119.2 379.9
D-ATIS
134.825
CLNC DEL 118.85
CPDLC
GND CON 121.8
NEWARK TOWER
118.3 257.6

HUGUENOT
116.1 HUO
Chan 108

TOP ALTITUDE:
2000

△ GREKI

KINGSTON
117.6 IGN
Chan 123

△ MERIT

BAYYS
△

BREZY △

CARMEL
116.6 CMK
Chan 113

BRIDGEPORT
108.8 BDR
Chan 25

DEER PARK
117.7 DPK
Chan 124

KENNEDY
115.9 JFK
Chan 106

LOCALIZER 108.7
I-EZA
Chan 24

LA GUARDIA
113.1 LGA
Chan 78

LOCALIZER 110.75
I-EWR
Chan 44 (Y)

SPARTA
115.7 SAX
Chan 104

BROADWAY
114.2 BWZ
Chan 89

SOLBERG
112.9 SBJ
Chan 76

EAST TEXAS
110.2 ETX
Chan 39

ELIOT △
ZIMMZ △

PARKE △

LANNA △

BIGGY △

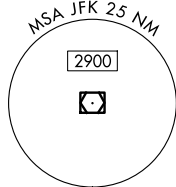
POTTSTOWN
116.5 PTW
Chan 112

△ ELVAE

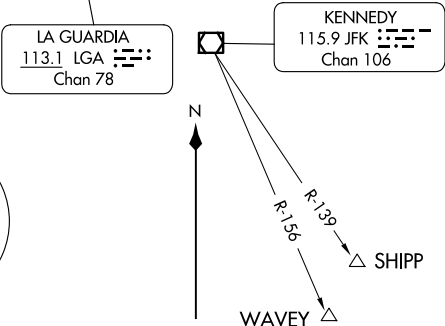
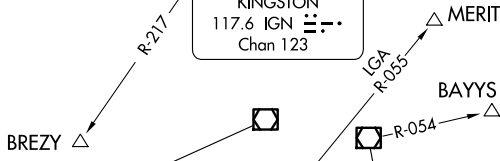
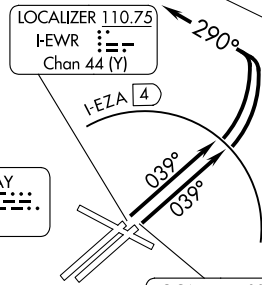
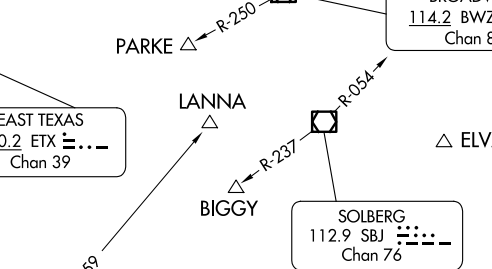
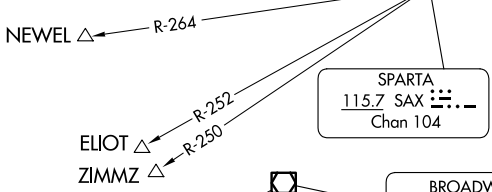
NECK

WHITE △

△ DIXIE



△ SHIPP
WAVEY △



NOTE: Chart not to scale.

(NARRATIVE ON FOLLOWING PAGE)

RNAV 1 - GPS. For DIXIE and WHITE Departures.
RADAR and DME required.

DEVIL ONE DEPARTURE

AL-285 (FAA)

NEWARK, NEW JERSEY



DEPARTURE ROUTE DESCRIPTION

TAKEOFF RUNWAY 4L/R: Climb on heading 039° until I-EZA 4 DME (use I-EWR 3.6 DME when I-EZA is NA), then climbing left to turn heading 290°, maintain 2000, thence....

...as per notes or for RADAR vectors to assigned route/fix. Expect clearance to filed altitude/flight level ten (10) minutes after departure. Thence....

LOST COMMUNICATIONS: For aircraft proceeding to COATE, NEION, HAAYS, GAYEL, or BREZY, if radio contact lost/not established with ATC, climb to 3000 after SBJ R-054.

NOTE: Rwy 4L/R, simultaneous reception of EWR ILS/DME required.

Depart Rwy 4L/R

Expect RADAR VECTORS to:

DP FIX	
BAYYS	BDR/BDR R-054
BIGGY	SBJ /SBJ R-237
BREZY	IGN R-217 to BREZY
COATE	SAX/SAX R-311
DIXIE	ELVAE/NECCK
ELIOT	SAX R-252
GAYEL	DPK R-320
HAAYS	HUO
LANNA	PTW R-059
MERIT	LGA R-055
NEION	LGA R-322
NEWEL	SAX/SAX R-264
PARKE	BWZ R-250
SHIPP	JFK/JFK R-139
WAVEY	JFK/JFK R-156
WHITE	ELVAE/NECCK
ZIMMZ	SAX R-250

NOTE: ELIOT may be accessed by all types of aircraft requesting a final altitude of 14000 or 16000.

NOTE: NEWEL may be accessed by turbo jet aircraft only requesting a final altitude at or above FL180.

NOTE: ZIMMZ may be accessed by all types of aircraft requesting a final altitude at or above FL180.

TAKEOFF MINIMUMS:

Rwy 4L: Standard with minimum climb of 365'/NM to 800.

Rwy 4R: Standard with minimum climb of 345'/NM to 800.

NE-2, 20 FEB 2025 to 20 MAR 2025

NE-2, 20 FEB 2025 to 20 MAR 2025