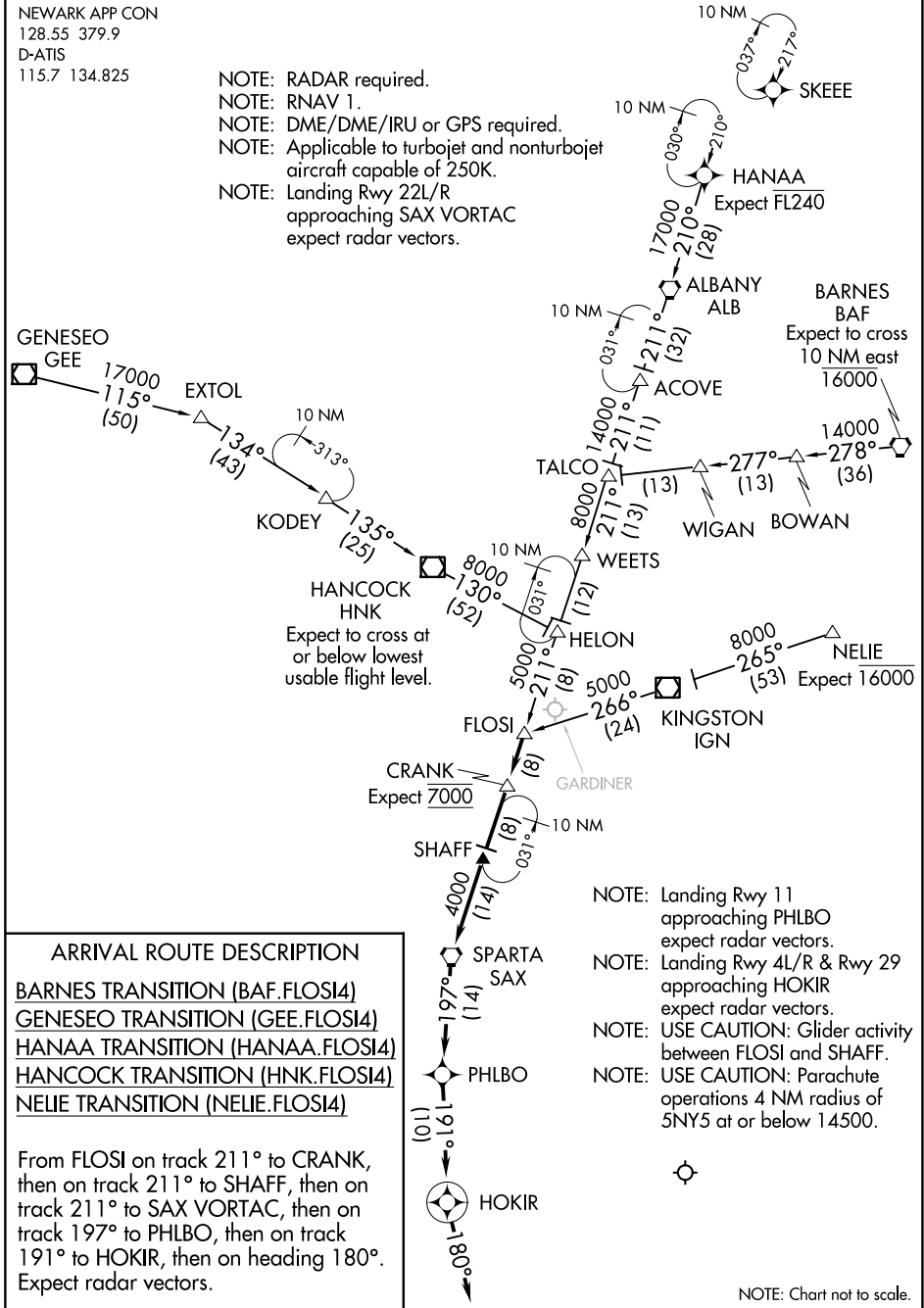


FLOSI FOUR ARRIVAL (RNAV)

NEWARK, NEW JERSEY

NEWARK APP CON
128.55 379.9
D-ATIS
115.7 134.825

- NOTE: RADAR required.
- NOTE: RNAV 1.
- NOTE: DME/DME/IRU or GPS required.
- NOTE: Applicable to turbojet and nonturbojet aircraft capable of 250K.
- NOTE: Landing Rwy 22L/R approaching SAX VORTAC expect radar vectors.



NE-2, 20 FEB 2025 to 20 MAR 2025

NE-2, 20 FEB 2025 to 20 MAR 2025

FLOSI FOUR ARRIVAL (RNAV)