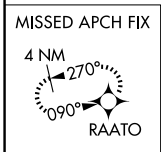
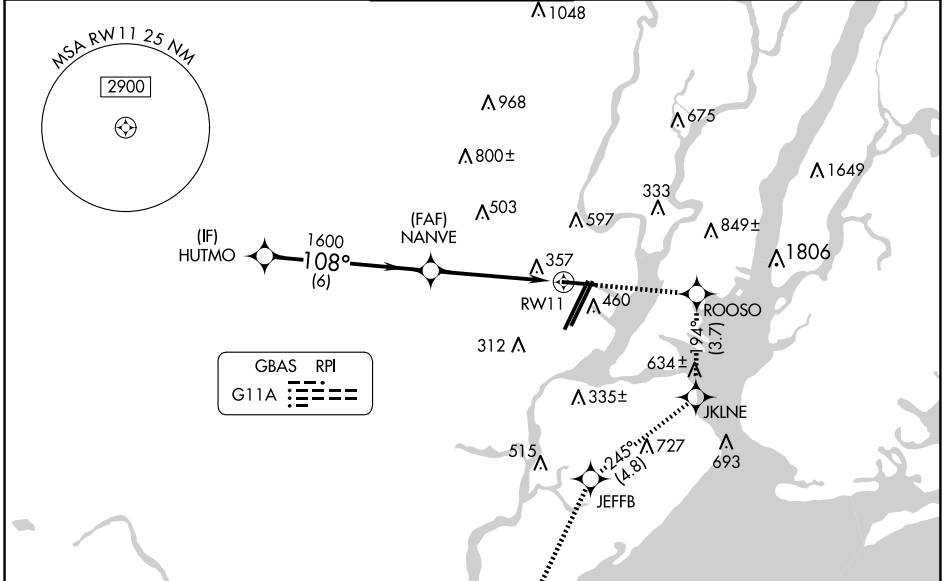


GBAS	APP CRS	Rwy Idg	6726
CH 21905	108°	TDZE	17
G11A		Apt Elev	17

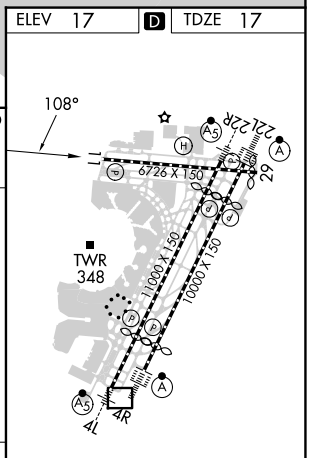
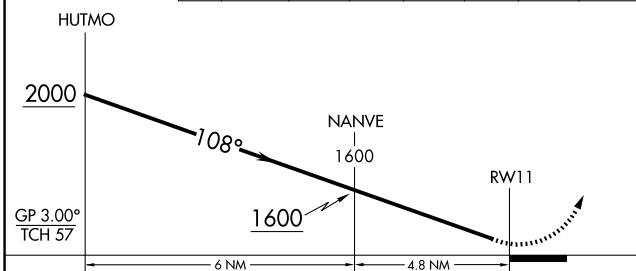
GLS RWY 11

NEWARK LIBERTY INTL (EWR)

RNP APCH - GPS.		MISSED APPROACH: (Do not exceed 230K until JKLNE)			
RADAR required.		Climb to 2000 direct ROOSO and right turn on track 194° to JKLNE and right turn on track 245° to JEFFB and left turn on track 218° to RAATO and hold.			
Autopilot coupled approach NA below 312. NA Rwy 11 helicopter visibility reduction below RVR 4000 NA.					
D-ATIS	NEWARK APP CON	NEWARK TOWER	GND CON	CLNC DEL	CPDLC
115.7 134.825	128.55 379.9	118.3 257.6	121.8	118.85	



2000	ROOSO	JKLNE	JEFFB	RAATO
↑		tr 194°		tr 218°



CATEGORY	A	B	C	D
GLS DA	312/45		295 (300-%)	

HIRL All Rwys
REIL Rwys 11, 22R, and 29
TDZ/CL All Rwys

NE-2, 20 FEB 2025 to 20 MAR 2025

NE-2, 20 FEB 2025 to 20 MAR 2025