

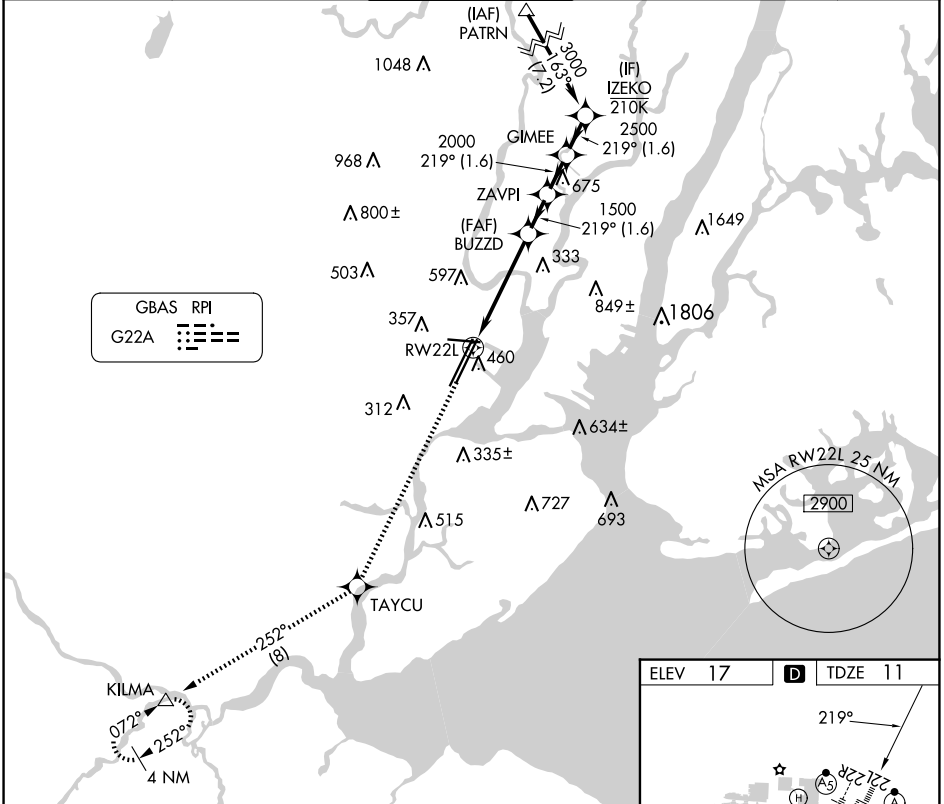
GBAS CH 21494 G22A	APP CRS 219°	Rwy Idg TDZE 11 Apt Elev 17	8207
--	------------------------	---	-------------

GLS RWY 22L

NEWARK LIBERTY INTL (EWR)

RNP APCH - GPS.		ALSIF-2	MISSED APPROACH: Climb to 3000 direct TAYCU and on track 252° to KILMA and hold.		
Autopilot coupled approach NA below 211.					

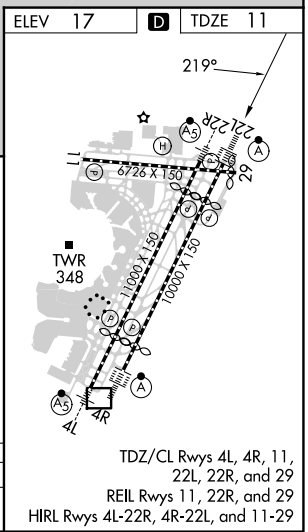
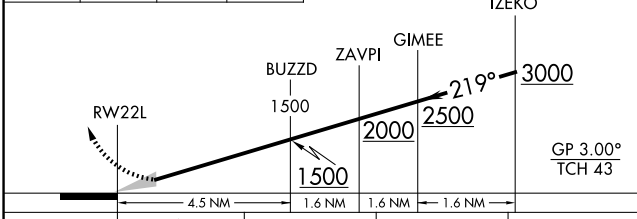
D-ATIS 115.7 134.825	NEWARK APP CON 128.55 379.9	NEWARK TOWER 118.3 257.6	GND CON 121.8	CLNC DEL 118.85	CPDLC
--------------------------------	---------------------------------------	------------------------------------	-------------------------	---------------------------	-------



NE-2, 20 FEB 2025 to 20 MAR 2025

NE-2, 20 FEB 2025 to 20 MAR 2025

3000	TAYCU	KILMA	VGSI and GLS glidepath not coincident (VGSI Angle 3.00/TCH 60).
		tr 252°	



GLS RWY 22L