

LOC/DME I-GPR 109.15 Chan 28 (Y)	APP CRS 107°	Rwy ldg TDZE Apt Elev	6726 17 17
---	------------------------	-----------------------------	---------------------------------------

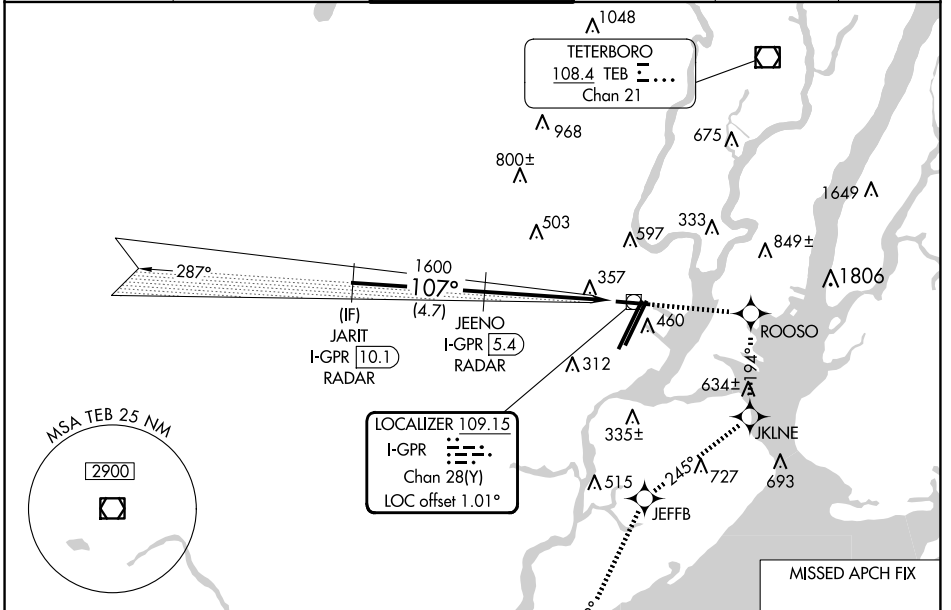
ILS or LOC RWY 11

NEWARK LIBERTY INTL (EWR)

RNP APCH - GPS.
DME required. RADAR required.
 ⚠ Circling NA south of Rwy 11-29. When Circling to Rwy 29 at night, operational VGSi required, remain on or above VGSi glidepath until threshold. Rwy 11 helicopter visibility reduction below ¼ SM NA.

MISSED APPROACH: (Do not exceed 230K until JKLINE)
Climb to 2000 direct ROOSO and right turn on track 194° to JKLINE and right turn on track 245° to JEFFB and left turn on track 218° to RAATO and hold.

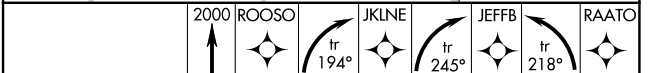
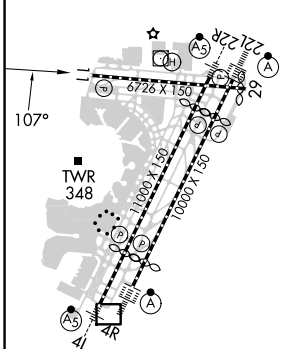
D-ATIS 115.7 134.825	NEWARK APP CON 128.55 379.9	NEWARK TOWER 118.3 257.6	GND CON 121.8	CLNC DEL 118.85	CPDLC
--------------------------------	---------------------------------------	------------------------------------	-------------------------	---------------------------	-------



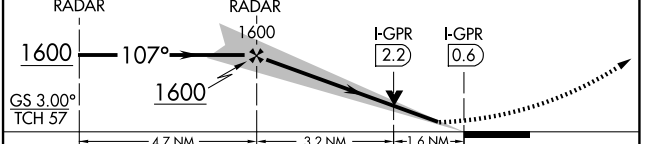
NE-2, 20 FEB 2025 to 20 MAR 2025

NE-2, 20 FEB 2025 to 20 MAR 2025

ELEV 17	D	TDZE 17
---------	----------	---------



JARIT I-GPR [10.1] RADAR
JEENO I-GPR [5.4] RADAR
VGSi and ILS glidepath not coincident (VGSi Angle 3.00/TCH 60).



CATEGORY	A	B	C	D
S- ILS 11	618-1¾ 601 (700-1¾)			
S- LOC 11	660/55	643 (700-1)	660-1½ 643 (700-1½)	900-2½ 900-2¾
C CIRCLING	660-1	643 (700-1)	883 (900-2½)	883 (900-2¾)