

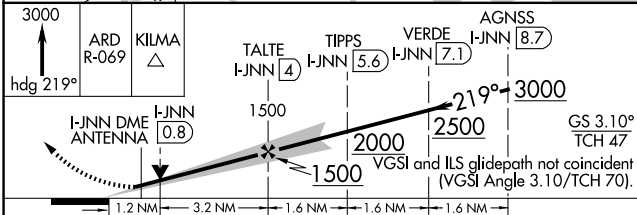
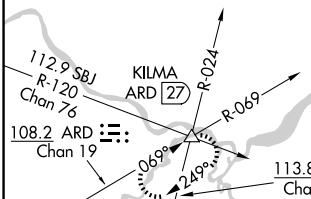
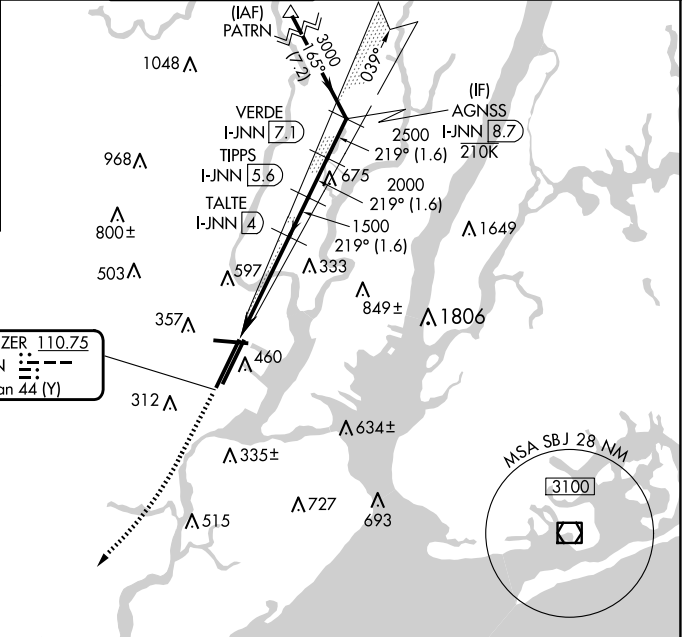
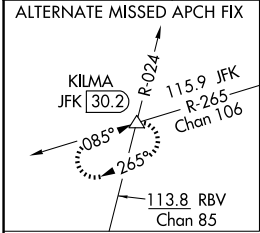
LOC/DME I-JNN 110.75 Chan 44 (Y)	APP CRS 219°	Rwy Idg TDZE Apt Elev	22R 9560 10 17	22L 8207 11 17
---	------------------------	-----------------------------	--	--

ILS or LOC RWY 22R

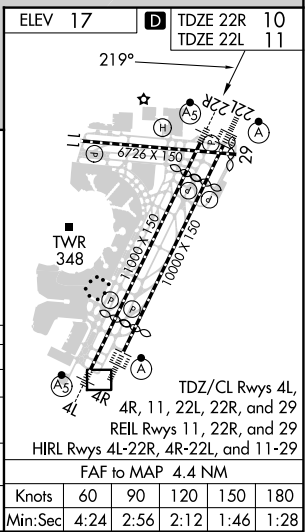
NEWARK LIBERTY INTL (EWR)

RNP APCH - GPS Aircraft not GPS equipped - RADAR required for procedure entry. DME required.		22R MALSR 	22L ALSF-2 	MISSED APPROACH: Climb to 3000 on heading 219° and ARD VOR/DME R-069 to KILMA INT/ARD 27 DME and hold.
Circling NA south of Rwy 11-29. When Circling to Rwy 29 at night, operational VGSI required, remain on or above VGSI glidepath until threshold. For inop ALS, increase S-LOC 22R Cat C/D visibility to 1 1/2 SM.				

D-ATIS 115.7	NEWARK APP CON 128.55 379.9	NEWARK TOWER 118.3 257.6	GND CON 121.8	CLNC DEL 118.85	CPDLC
------------------------	---------------------------------------	------------------------------------	-------------------------	---------------------------	-------



CATEGORY	A	B	C	D
S-ILS 22R	210/18		200 (200-1/2)	
S-LOC 22R	480/24	470 (500-1/2)	480/50	470 (500-1)
SIDESTEP RWY 22L	540/55 529 (600-1)		540-1 1/2 529 (600-1 1/2)	
CIRCLING	660-1	643 (700-1)	900-2 3/4 883 (900-2 3/4)	900-3 883 (900-3)



NE-2, 20 FEB 2025 to 20 MAR 2025

NE-2, 20 FEB 2025 to 20 MAR 2025