

LOC/DME I-EZA 108.7 Chan 24	APP CRS 039°	Rwy Idg TDZE Apt Elev	4R 8810	4L 8460
---	------------------------	-----------------------------	-------------------	-------------------

ILS or LOC RWY 4R

NEWARK LIBERTY INTL (EWR)

RNP APCH - GPS. RADAR required.

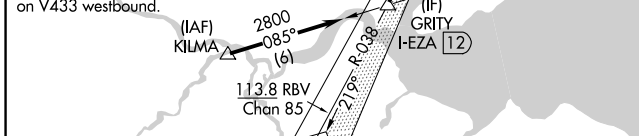
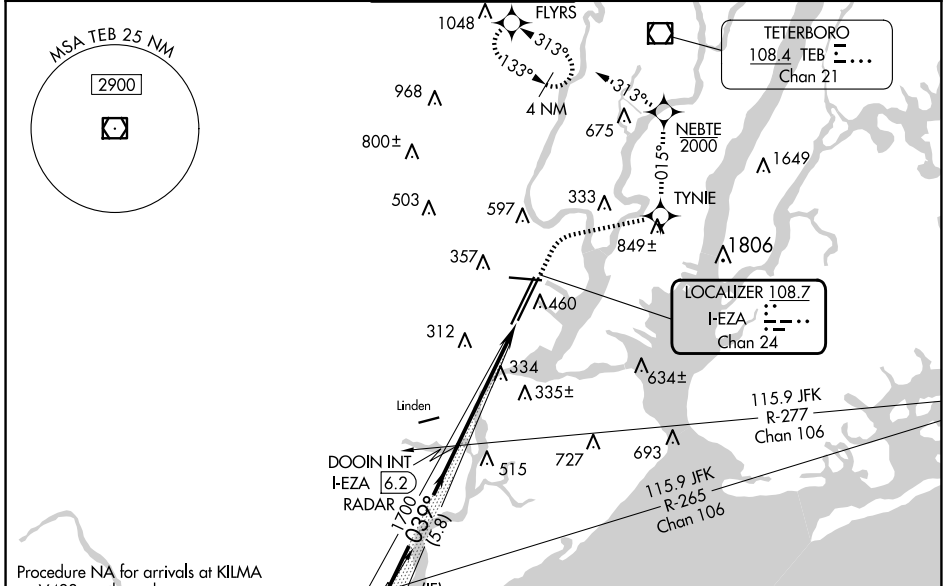
When Circling to Rwy 29 at night, operational VGSI required, remain on or above VGSI glidepath until threshold. For inop ALS, increase Sidestep 4L Cat C visibility to 1½ SM.

4R ALSR-2

4L MALS

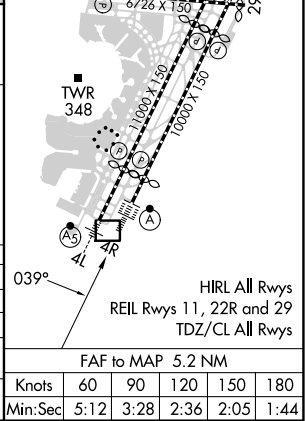
MISSED APPROACH: (Do not exceed 210K until NEBTE) Climb to 560 then climbing right turn to 2000 direct TYNIE and left turn on track 015° to NEBTE, cross NEBTE at or below 2000 then climbing left turn to 3000 on track 313° to FLYRS and hold, continue climb-in-hold to 3000.

D-ATIS 115.7 134.825	NEWARK APP CON 128.55 379.9	NEWARK TOWER 118.3 257.6	GND CON 121.8	CLNIC DEL 118.85	CPDLC
--------------------------------	---------------------------------------	------------------------------------	-------------------------	----------------------------	-------



ELEV 17	TDZE 4R 11
	TDZE 4L 10

GRITY I-EZA 12	DOOIN INT I-EZA 6.2	VGSI and ILS glidepath not coincident (VGSI Angle 2.95/TCH 71).	I-EZA 2.7	I-EZA 1
2800	1700			
GS 2.95° TCH 55				
5.8 NM	3.6 NM	1.7 NM		
CATEGORY	A	B	C	D
S-ILS 4R	211/18 200 (200-½)			
S-LOC 4R	600/24	589 (600-½)	600-1¼	589 (600-1¼)
SIDESTEP RWY 4L	600/55	590 (600-1)	600-1¼ 590 (600-1¼)	600-1½ 590 (600-1½)
CIRCLING	760-1	743 (800-1)	900-2¾ 883 (900-2¾)	900-3 883 (900-3)



NE-2, 20 FEB 2025 to 20 MAR 2025

NE-2, 20 FEB 2025 to 20 MAR 2025