

PORT FOUR DEPARTURE (RNAV)
(PORT 4, PORT) 29MAR18

PORT FOUR DEPARTURE (RNAV)
(PORT 4, PORT) 24277

A1-285 (FAA)

NEWARK LIBERTY INTL (E/W/R)
NEWARK, NEW JERSEY

NEWARK DEP CON
119.2 379.9
D-ATIS
134.825
CLNC DEL
118.85
CPDLC
GND CON
121.8
NEWARK TOWER
118.3 257.6

NOTE: Chart not to scale.

TOP ALTITUDE:
2500

GAYEL \triangle

GREKI \triangle

HAAYS \triangle

MERIT \triangle

NEION \triangle

CARMEL
CMK \square

BAYYS \triangle

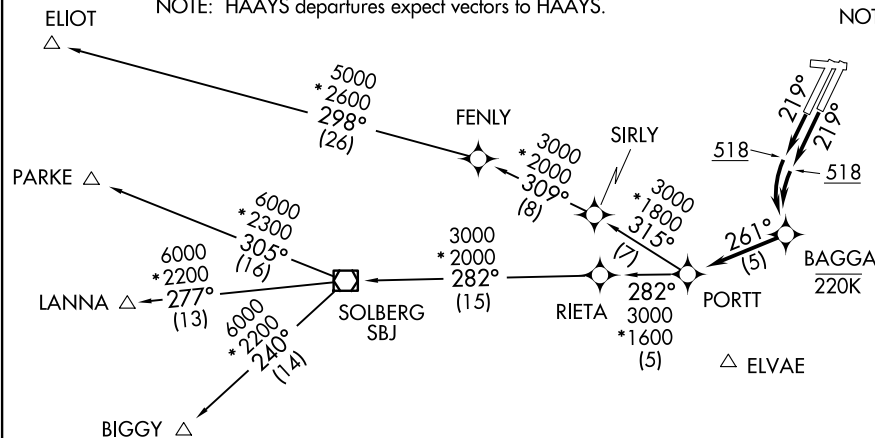
BREZY \triangle

\square BRIDGEPORT
BDR

COATE \triangle

NOTE: COATE departures expect vectors to BDR VOR/DME direct COATE.
NOTE: HAAYS departures expect vectors to HAAYS.

NOTE: BAYYS departure expect vectors to BDR VOR/DME direct BAYYS.
NOTE: GREKI departures expect vectors to CMK VOR/DME direct GREKI.
NOTE: MERIT departures expect vectors to LGA VOR/DME direct MERIT.



\square LA GUARDIA
LGA

\square KENNEDY
JFK

NOTE: DIXIE departures expect vectors to ELVAE direct COL VOR/DME direct DIXIE.
NOTE: WAVEY departures expect vectors to JFK VOR/DME direct WAVEY.
NOTE: WHITE departures expect vectors to ELVAE direct COL VOR/DME direct WHITE.

NOTE: DME/DME/IRU or GPS required.
NOTE: RADAR required.
NOTE: RNAV 1.
NOTE: Do not exceed 220K until crossing BAGGA.

(NARRATIVE ON FOLLOWING PAGE)

TAKEOFF MINIMUMS:

Rwys 4R, 4L, 11, 29: NA-ATC.

Rwy 22L, 22R: Standard with a minimum climb of 500' per NM to 518.

NEWARK, NEW JERSEY
NEWARK LIBERTY INTL (E/W/R)

PORTT FOUR DEPARTURE (RNAV)



DEPARTURE ROUTE DESCRIPTION

TAKEOFF RUNWAYS 22L/22R: Climb heading 219° to 518, then left turn direct BAGGA, then on depicted route to PORTT, thence

. . . . on assigned transition, or on vectors to assigned departure fix, maintain 2500. Expect clearance to filed altitude/flight level within 10 minutes after departure.

BIGGY TRANSITION (PORTT4.BIGGY):

ELIOT TRANSITION (PORTT4.ELIOT):

LANNA TRANSITION (PORTT4.LANNA):

PARKE TRANSITION (PORTT4.PARKE):

NE-2, 20 FEB 2025 to 20 MAR 2025

NE-2, 20 FEB 2025 to 20 MAR 2025