

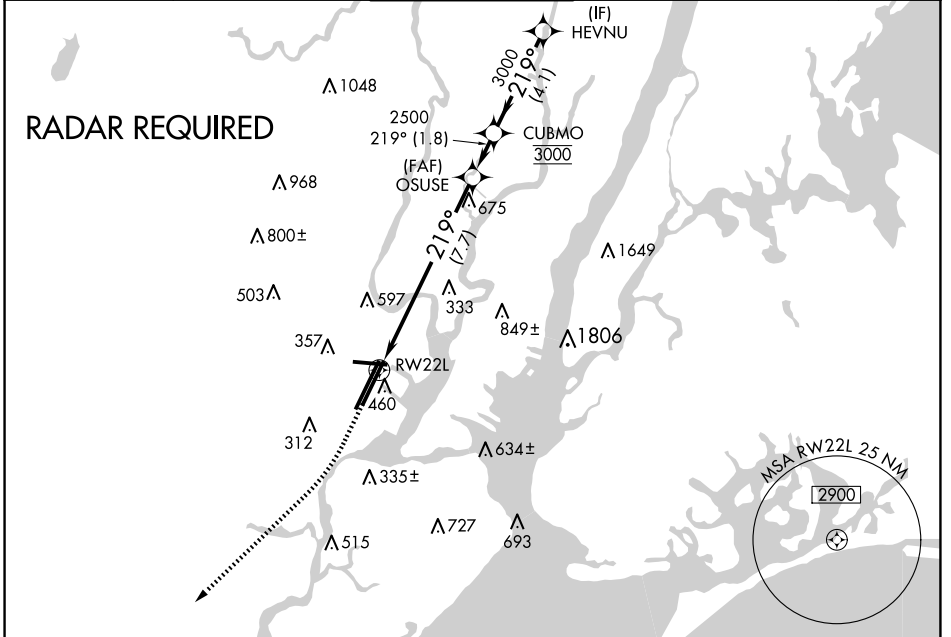
APP CRS 219°	Rwy Idg 8207
	TDZE 11
	Apt Elev 17

RNAV (RNP) Y RWY 22L

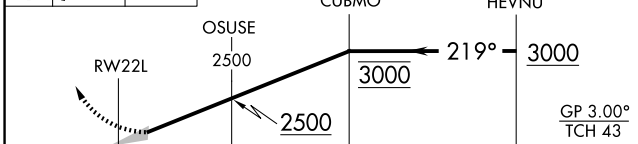
NEWARK LIBERTY INTL (EWR)

RNP AR APCH - GPS.	ALSF-2 	MISSED APPROACH: Climb to 600 then climbing right turn to 3000 direct KILMA and hold.
For uncompensated Baro-VNAV systems, procedure NA below -13°C or above 54°C.		

D-ATIS 115.7 134.825	NEWARK APP CON 128.55 379.9	NEWARK TOWER 118.3 257.6	GND CON 121.8	CLNC DEL 118.85	CPDLC
--------------------------------	---------------------------------------	------------------------------------	-------------------------	---------------------------	-------

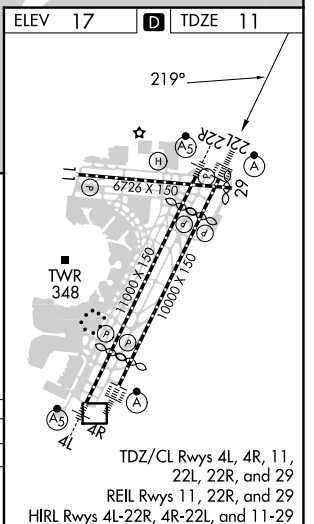


ELEV 17	TDZE 11
600	3000
KILMA	VGSI and RNAV glidepath not coincident (VGSI Angle 3.00/TCH 60).
Δ	Δ



CATEGORY	A	B	C	D
RNP 0.30 DA	462/50		451 (500-1)	

AUTHORIZATION REQUIRED



TDZ/CL Rwy 4L, 4R, 11, 22L, 22R, and 29
REIL Rwy 11, 22R, and 29
HIRL Rwy 4L-22R, 4R-22L, and 11-29

NE-2, 20 FEB 2025 to 20 MAR 2025

NE-2, 20 FEB 2025 to 20 MAR 2025