

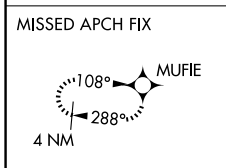
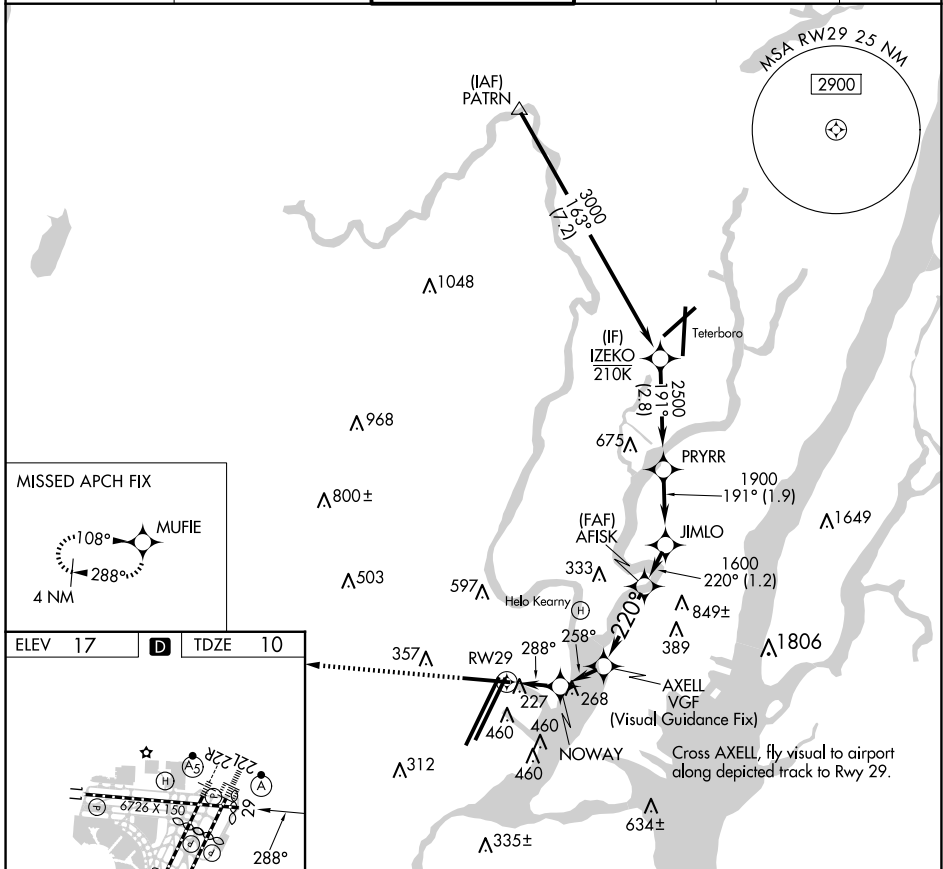
# RNAV (GPS) W RWY 29

NEWARK LIBERTY INTL (EWR)

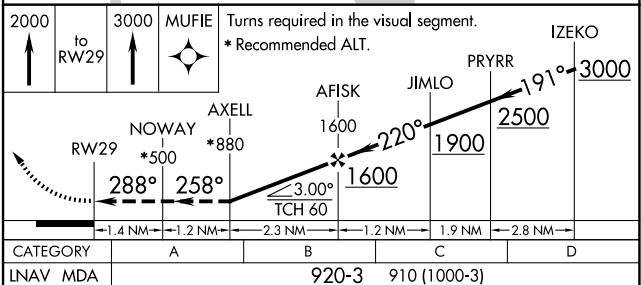
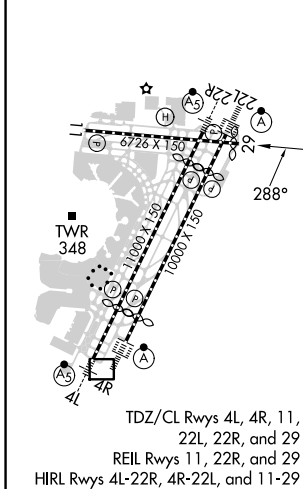
APP CRS	Rwy Idg	<b>6502</b>
<b>288°</b>	TDZE	<b>10</b>
	Apt Elev	<b>17</b>

RNP APCH - GPS.		MISSED APPROACH: (Do not exceed 165K until Rwy 29) Climb to 2000 on the extended visual approach track to Rwy 29, then climb to 3000 direct MUFIE and hold.
RADAR required.		
<p>▼ Rwy 29 helicopter visibility reduction below 1 SM NA. Straight-in Rwy 29 at night,                  ▲ operational VGSI required, remain at or above VGSI glidepath until threshold.</p>		

D-ATIS	NEWARK APP CON	NEWARK TOWER	GND CON	CLNC DEL	CPDLC
<b>115.7 134.825</b>	<b>128.55 379.9</b>	<b>118.3 257.6</b>	<b>121.8</b>	<b>118.85</b>	



ELEV 17	<b>D</b>	TDZE 10
---------	----------	---------



CATEGORY	A	B	C	D
LNAV MDA		920-3	910 (1000-3)	

# RNAV (GPS) W RWY 29

NE-2, 20 FEB 2025 to 20 MAR 2025

NE-2, 20 FEB 2025 to 20 MAR 2025