

WAAS CH 70324 W22A	APP CRS 219°	Rwy Idg 8207 TDZE 11 Apt Elev 17
--	------------------------	---

RNAV (GPS) Z RWY 22L

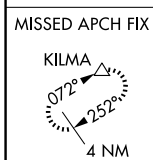
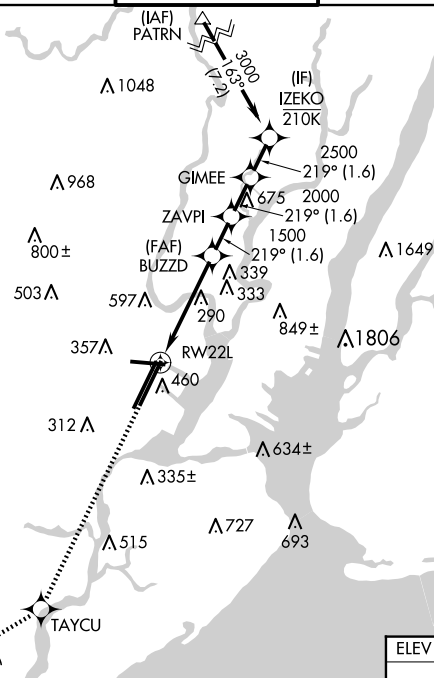
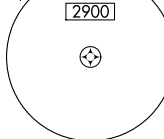
NEWARK LIBERTY INTL (EWR)

RNP APCH - GPS.		NEWARK APP CON		NEWARK TOWER		GND CON	CLNC DEL	CPDLC
<p>⚠ Circling NA south of Rwy 11-29. For uncompensated Baro-VNAV systems, LNAV/VNAV NA below -12°C or above 54°C. When Circling to Rwy 29 at night, operational VGSI required, remain on or above VGSI glidepath until threshold.</p>		<p>115.7 134.825</p>		<p>128.55 379.9</p>		<p>121.8</p>	<p>118.85</p>	

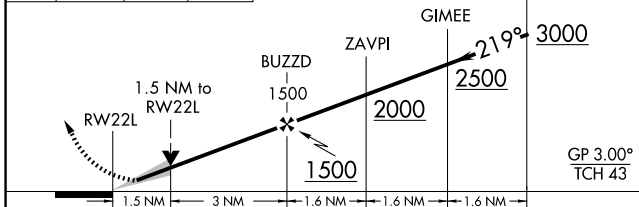


MISSED APPROACH: Climb to 3000 direct TAYCU and on track 252° to KILMA and hold.

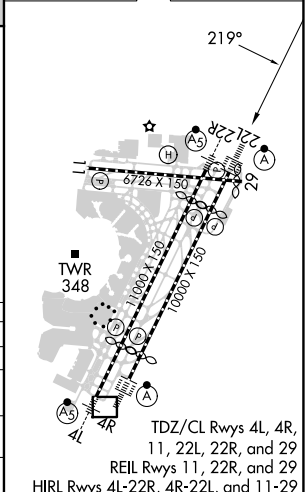
MSA RW22L 25 NM



3000	TAYCU	tr 252°	KILMA	VGSI and RNAV glidepath not coincident (VGSI Angle 3.00/TCH 60).
------	-------	---------	-------	--



ELEV 17	TDZE 11
---------	---------



CATEGORY	A	B	C	D
LPV DA		211/18	200 (200-½)	
LNAV/VNAV DA		462/45	451 (500-¾)	
LNAV MDA	560/24 549 (600-½)		560/60 549 (600-1¼)	
CIRCLING	660-1 643 (700-1)		900-2¾ 883 (900-2¾)	900-3 883 (900-3)

NE-2, 20 FEB 2025 to 20 MAR 2025

NE-2, 20 FEB 2025 to 20 MAR 2025