

| | | |
|---------------------------|------------------------|---|
| LOC I-POU 111.3 | APP CRS 063° | Rwy Idg TDZE 156 Apt Elev 164 |
|---------------------------|------------------------|---|

ILS or LOC RWY 6

HUDSON VALLEY RGNL (POU)

DME required for LOC only.

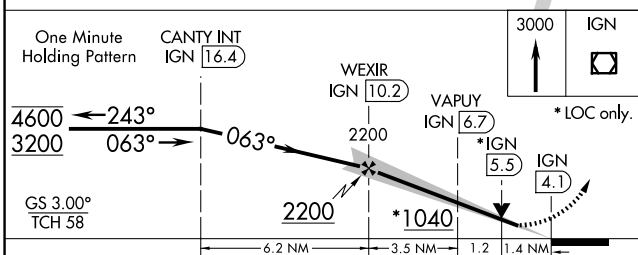
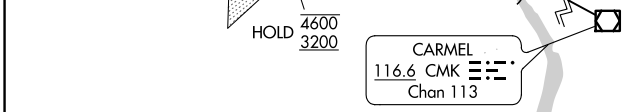
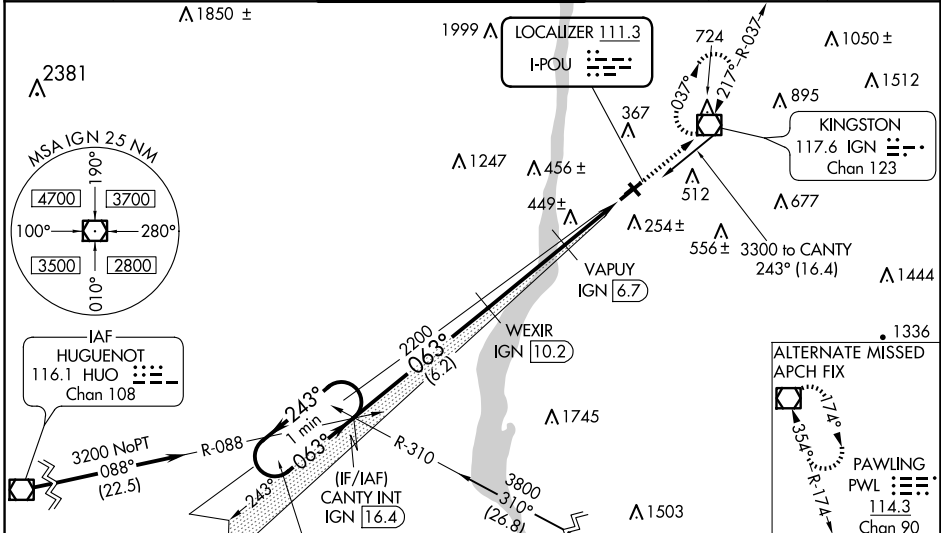
⚠ Circling NA to Rwys 7 and 25. Circling Rwy 15, 33 NA at night. Rwy 6 helicopter visibility reduction below 3/4 SM NA. DME from IGN VOR/DME. Simultaneous reception of I-POU and IGN DME required. For inop ALS, increase S-LOC 6 Cats C/D visibility to 1 1/2 SM. When local altimeter setting not received, use Montgomery altimeter setting: increase S-ILS 6 DA to 556; increase all MDA 80 feet and S-LOC 6 and Circling Cats C/D visibility 1/4 SM. Inop table does not apply to S-ILS 6 all Cats and S-LOC 6 Cats A/B. For inop ALS when using Montgomery altimeter setting, increase S-ILS 6 all Cats visibility to 1 1/2 SM and S-LOC 6 Cats C/D visibility to 1 1/2 SM.

MALSR

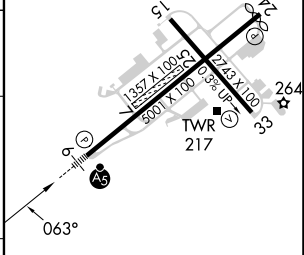


MISSED APPROACH:
Climb to 3000 direct IGN VOR/DME and hold, continue climb-in-hold to 3000.

| | | | | | |
|-----------------------|---|---|-------------------------|--------------------------|-------------------------|
| ATIS 126.75 | NEW YORK APP CON 132.75 363.1 | DUTCHESS COUNTY TOWER ★ 124.0 (CTAF) 269.15 | GND CON 121.8 | CLNC DEL 121.8 | UNICOM 122.95 |
|-----------------------|---|---|-------------------------|--------------------------|-------------------------|



| | |
|----------|----------|
| ELEV 164 | TDZE 156 |
|----------|----------|



| CATEGORY | A | B | C | D |
|----------|----------------------|----------------------|------------------------------|------------------------|
| S-ILS 6 | | 485-1 | 329 (400-1) | |
| S-LOC 6 | | 640-1 | 484 (500-1) | |
| CIRCLING | 760-1 596 (600-1) | 840-1 676 (700-1) | 940-2 1/4 776 (800-2 1/4) | 1080-3 916 (1000-3) |

MIRL Rwy 15-33
HIRL Rwy 6-24
REIL Rwy 24
REIL Rwy 33

NE-2, 20 FEB 2025 to 20 MAR 2025

NE-2, 20 FEB 2025 to 20 MAR 2025