

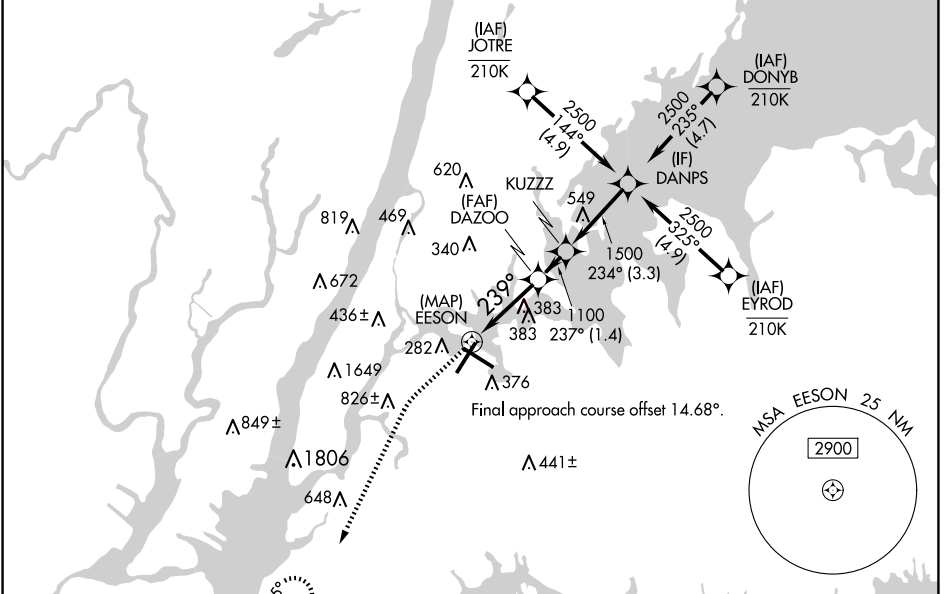
APP CRS	Rwy Idg	<b>7002</b>
<b>239°</b>	TDZE	<b>12</b>
	Apt Elev	<b>21</b>

# RNAV (GPS) X RWY 22

LAGUARDIA (LGA)

RNP APCH - GPS.		ALSF-1 	MISSED APPROACH: Climb to 500 then climbing left turn to 3000 direct PROUD and hold, continue climb-in-hold to 3000.
	Circling NA northwest of Rwy 4 and southwest of Rwy 13. For uncompensated Baro-VNAV systems, LNAV/VNAV NA below -11°C or above 54°C. For inop ALS, increase LNAV/VNAV all Cats visibility to RVR 5500; increase LNAV Cats C/D visibility to 1 1/4 SM.		

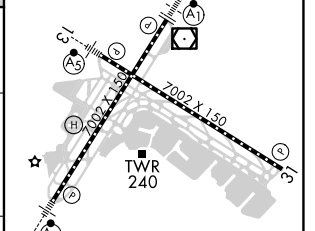
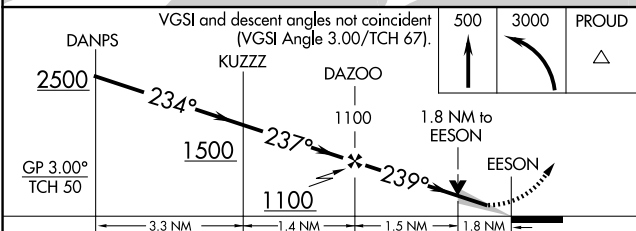
D-ATIS ARR	<b>125.95</b>	NEW YORK APP CON	<b>120.8 263.0</b>	LAGUARDIA TOWER	<b>118.7 263.0</b>	GND CON	<b>121.7 263.0</b>	CLNC DEL	<b>135.2</b>	CPDLC
D-ATIS DEP	<b>127.05</b>									



NE-2, 20 FEB 2025 to 20 MAR 2025

NE-2, 20 FEB 2025 to 20 MAR 2025

ELEV	<b>21</b>	<b>D</b>	TDZE	<b>12</b>
------	-----------	----------	------	-----------



CATEGORY	A	B	C	D
LNAV/VNAV DA		381/35	369 (400-%)	
LNAV MDA	640/24	628 (700-1/2)	640-1 3/8	628 (700-1 3/8)
<b>C</b> CIRCLING	680-1	659 (700-1)	700-2 679 (700-2)	760-2 1/4 739 (800-2 1/4)

TDZ/CL Rws 4, 13 and 22  
 HIRL Rws 4-22 and 13-31  
 REIL Rwy 31