

APP CRS	Rwy Idg	7002
314°	TDZE	7
	Apt Elev	21

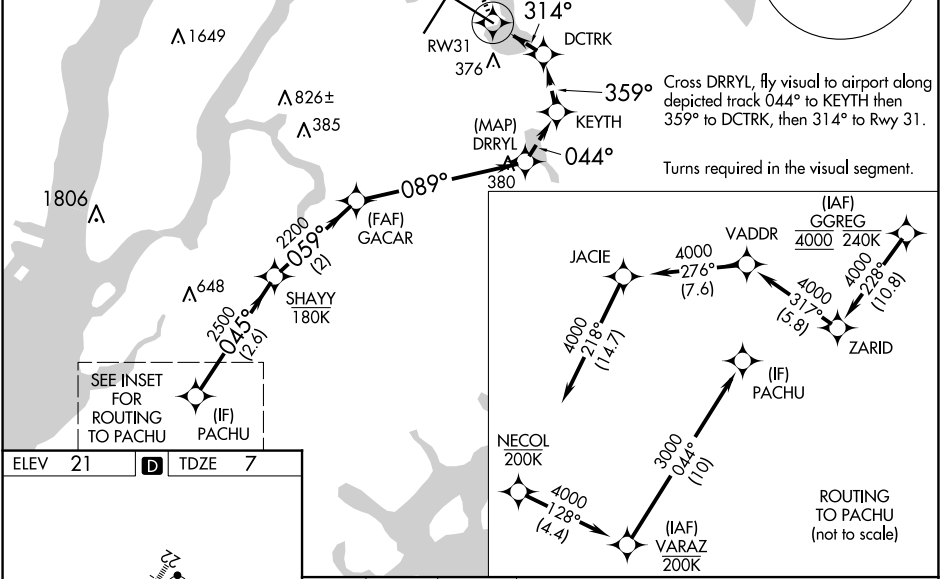
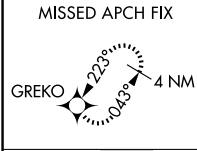
RNAV (GPS) X RWY 31

LAGUARDIA (LGA)

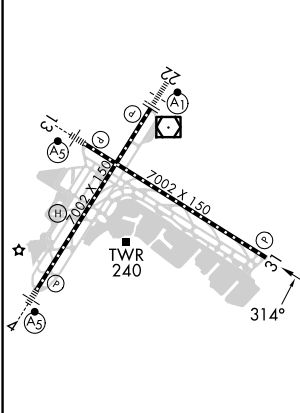
RNP APCH - GPS.
 RADAR required.
 ▼ Rwy 31 helicopter visibility reduction below 3/4 SM NA.
 ▲

MISSED APPROACH: (Do not exceed 165K until Rwy 31 then do not exceed 210K until GREKO). Climb to 2000 on FMS lateral path to RW31, then climbing right turn direct GREKO and hold. If unable to follow the FMS lateral path, turn left heading 025° and climb to 2000 direct GREKO and hold.

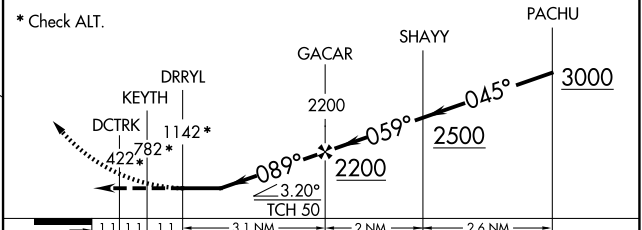
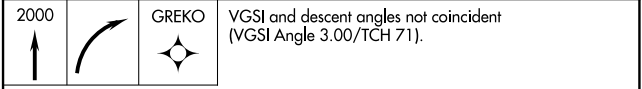
D-ATIS ARR	125.95	NEW YORK APP CON	120.8 263.0	LAGUARDIA TOWER	118.7 263.0	GND CON	121.7 263.0	CLNC DEL	135.2	CPDLC
D-ATIS DEP	127.05									



ELEV	21	D	TDZE	7
------	-----------	----------	------	----------



TDZ/CL Rws 4, 13 and 22
 HIRL Rws 4-22 and 13-31
 REIL Rwy 31



CATEGORY	A	B	C	D
LNAV MDA	1160-4 1153 (1200-4)			

NE-2, 20 FEB 2025 to 20 MAR 2025

NE-2, 20 FEB 2025 to 20 MAR 2025