

RNAV (GPS) RWY 10

WAAS Chan 44826 W10A	APCH CRS 100°	Rwy Idg 8071 TDZE 14 Arpt Elev 15
--	-------------------------	--

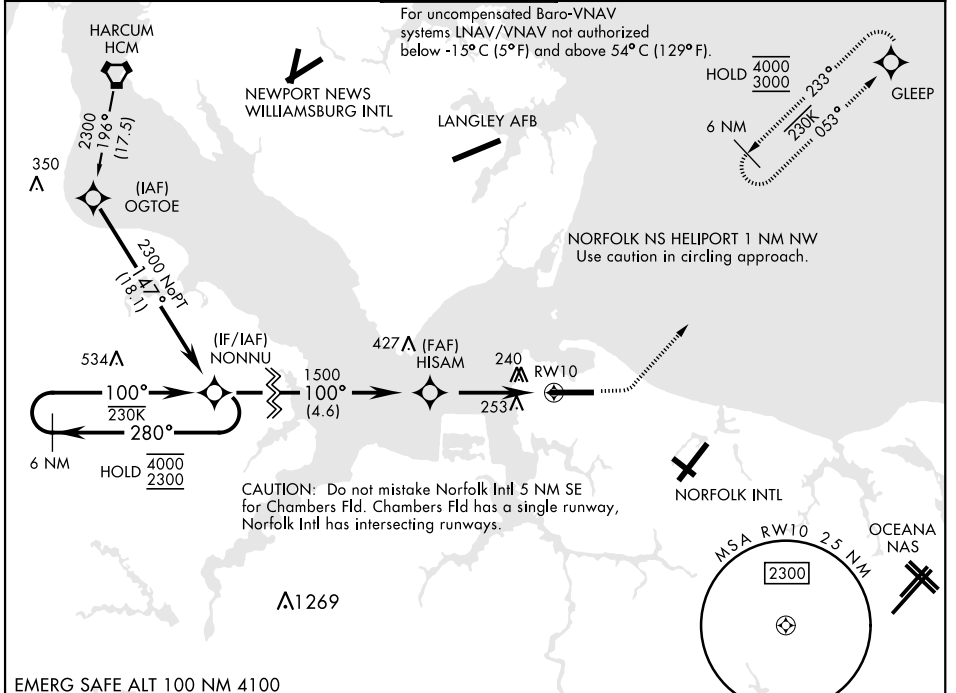
[USN]

NORFOLK NS (CHAMBERS FLD) (KNGU)

RNP APCH
 ▼ *When ALS inop, increase vis to 3/4 mile.
 **When ALS inop, increase vis to 1 3/8 miles.
 *** When ALS inop, increase CAT AB vis to 1 mile, CAT CDE vis to 1 1/8 miles.
 **** Circling not authorized S of Rwy 10-28.

ALSF-2
 MISSED APPROACH: Climb to 800 then climbing left turn to 3000 direct GLEEP and hold.

ATIS 118.425 338.225	APP CON 118.9 273.475	CHAMBERS TOWER 124.3 379.15	GND CON 121.8 370.85	CLNC DEL 120.7 339.8	ASR/PAR
--------------------------------	---------------------------------	---------------------------------------	--------------------------------	--------------------------------	---------



VGSI and RNAV glidepath not coincident (VGSI Angle 3.00/TCH 35).

6 NM Holding Pattern	NONNU	HISAM	RW10
4000 2300	280°	100°	1500
GP 3.00° TCH 50	100°	100°	4.5 NM

CATEGORY	A	B	C	D	E
LPV DA *	214-1/2		200	(200-1/2)	
LNAV/VNAV DA **	520-1		506	(600-1)	
LNAV MDA ***	520-1/2 506 (600-1/2)		520-1	506	(600-1)
CIRCLING ****	520-1 505 (600-1)	540-1 525 (600-1)	540-1 1/2 525 (600-1 1/2)	580-2	565 (600-2)

ELEV	15	TDZE	14
------	----	------	----

Rwy 10 Idg 8071'
Rwy 28 Idg 7375'

HIRL Rwy 10-28
REIL Rwy 10-28
TDZL/CL Rwy 10-28

RNAV (GPS) RWY 10

NE-3, 20 FEB 2025 to 20 MAR 2025

NE-3, 20 FEB 2025 to 20 MAR 2025