

NORFOLK, VIRGINIA

# TACAN Z RWY 10

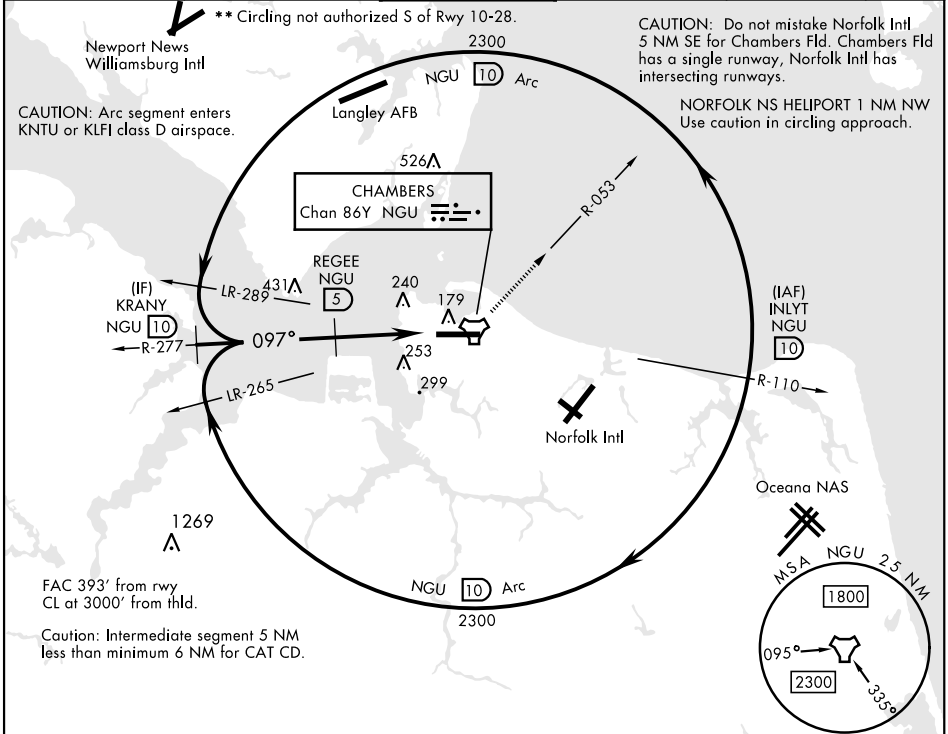
TACAN NGU Chan <b>86Y</b>	APCH CRS <b>097°</b>	Rwy ldg <b>8071'</b> TDZE <b>14</b> Arprt Elev <b>15</b>
---------------------------	----------------------	--

[USN]

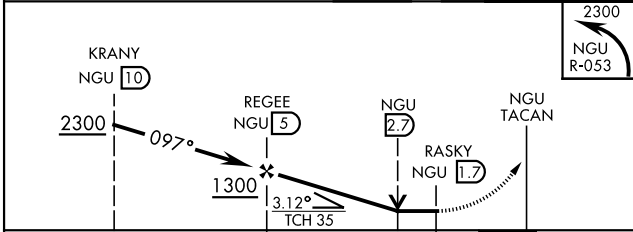
NORFOLK NS (CHAMBERS FLD) (KNGU)

RADAR required	ALSIF-2	MISSED APPROACH: Climbing left turn to 2300 on NGU TACAN R-053 then as directed by ATC.
<p>▼ * When ALS inop, increase CAT AB vis to 1 mile, CAT CD vis to 1½ miles.</p>		

ATIS <b>118.425 338.225</b>	APP CON <b>118.9 273.475</b>	CHAMBERS TOWER <b>124.3 379.15</b>	GND CON <b>121.8 370.85</b>	CLNC DEL <b>120.7 339.8</b>	ASR/PAR
--------------------------------	---------------------------------	---------------------------------------	--------------------------------	--------------------------------	---------

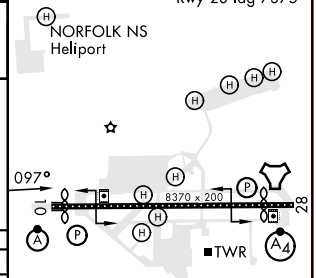


EMERG SAFE ALT 100 NM 4100



ELEV	15	TDZE	14
------	----	------	----

Rwy 10 ldg 8071'  
Rwy 28 ldg 7375'



CATEGORY	A	B	C	D
S-10*	520-½	506 (600-½)	520-1	506 (600-1)
CIRCLING**	520-1 505 (600-1)	540-1 525 (600-1)	540-1½ 525 (600-1½)	580-2 565 (600-2)

HIRL Rwy 10-28  
REIL Rwy 10-28  
TDZL/CL Rwy 10-28

NORFOLK, VIRGINIA

36° 56' N-76° 17' W

NORFOLK NS (CHAMBERS FLD) (KNGU)

Orig 26JAN23

# TACAN Z RWY 10

NE-3, 20 FEB 2025 to 20 MAR 2025

NE-3, 20 FEB 2025 to 20 MAR 2025