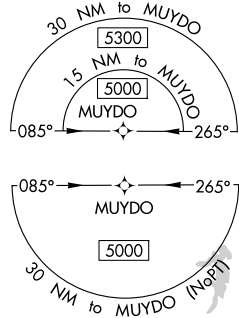
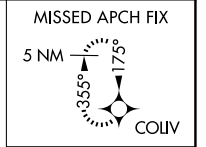
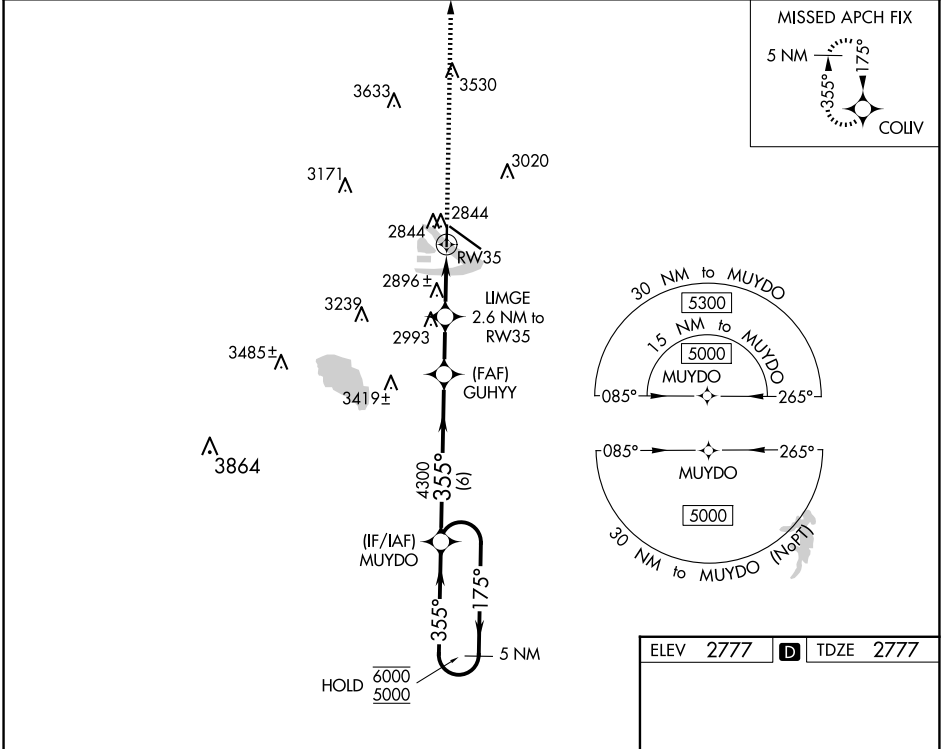


WAAS CH <b>56634</b> <b>W35A</b>	APP CRS <b>355°</b>	Rwy Idg TDZE Apt Elev	<b>4135</b> <b>2777</b> <b>2777</b>
--	------------------------	-----------------------------	---

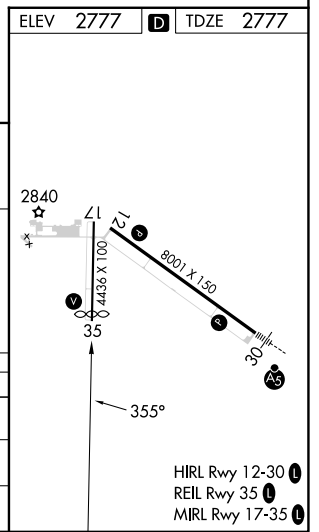
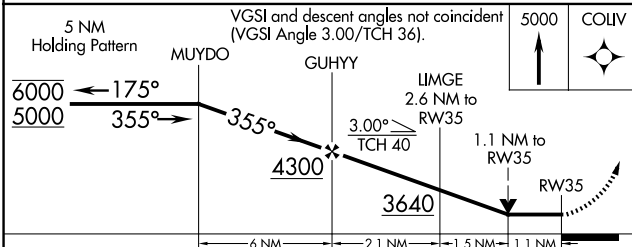
# RNAV (GPS) RWY 35

NORTH PLATTE RGNL/LEE BIRD FLD (L.B.F.)

RNP APCH-GPS.		MISSED APPROACH: Climb to 5000 direct COLIV and hold.	
<p>Rwy 35 helicopter visibility reduction below 3/4 SM NA.</p>		ASOS <b>118.425</b>	DENVER CENTER <b>132.7 226.675</b>
		CLNC DEL <b>132.7</b>	UNICOM <b>123.0 (CTAF) 0</b>



ELEV 2777	<b>D</b> TDZE 2777
-----------	--------------------



CATEGORY	A	B	C	D
LP MDA	3140-1 363 (400-1)			
LNAV MDA	3160-1 383 (400-1)	3160-1 1/8 383 (400-1 1/8)		
<b>C</b> CIRCLING	3280-1 503 (600-1)	3340-1 563 (600-1)	3420-1 3/4 643 (700-1 3/4)	3560-2 1/2 783 (800-2 1/2)

- HIRL Rwy 12-30 0
- REIL Rwy 35 0
- MIRL Rwy 17-35 0

NC-2, 20 FEB 2025 to 20 MAR 2025

NC-2, 20 FEB 2025 to 20 MAR 2025